

Flat 4 Ventry Court, 523 Barlow Moor Road, Chorlton, M21 8AQ



JP & Brimelow
SALES

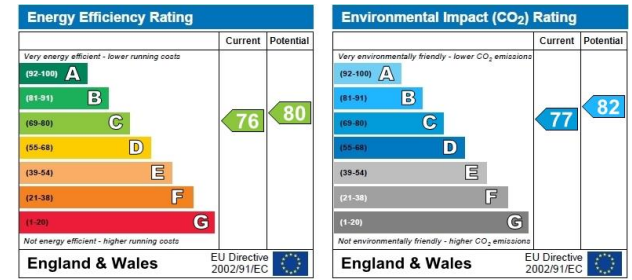
Price: £187,500

****VIDEO TOUR AVAILABLE**** An immaculately presented & light, TWO DOUBLE BEDROOMED, raised ground floor apartment at the front of this development, within this attractive detached period conversion in the heart of Chorlton on Barlow Moor Road. Situated within walking distance to the centre of Chorlton and all its amenities, Metrolink station on Wilbraham Road giving you direct access into the city centre/media city and Manchester International Airport, strolling distance from Beech Road with all its independent bars/cafes/restaurants and Chorlton Park. The well-planned accommodation comprises; communal entrance hall, private entrance hall, two double bedrooms, a modern fitted three-piece white bathroom, a fitted high gloss kitchen, a lounge/dining room with a bay window to the front aspect. The apartment benefits from double glazing throughout, an alarm, warmed by gas fired central heating, communal off-road parking and a lawned enclosed garden to the rear aspect. OFFERED WITH NO VENDOR CHAIN. Ideally suit a couple or a professional individual due to the location.



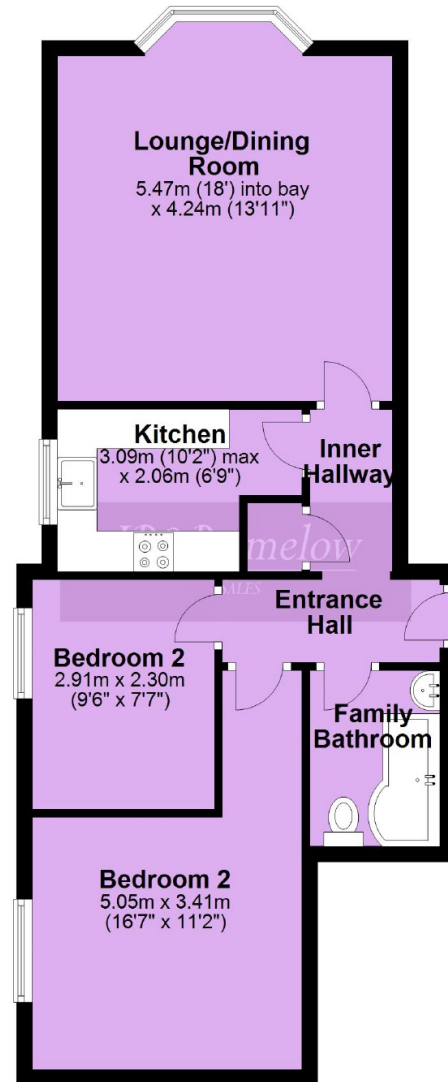


EPC Chart



Leasehold With an original lease of 125 years and 120 years remaining. The monthly service charge is £85 pcm. Annual ground rent of £90. (Information as per current vendor) March 2020. Council Tax Band: B

Ground Floor



Chorlton & Didsbury Sales

430 Barlow Moor Road, Chorlton, Manchester, M21 8AD

Chorlton: 0161 882 2233 Didsbury: 0161 448 0622

E: chorlton@jpbrimelow.co.uk www.jpandbrimelow.co.uk



JP&Brimelow

SALES

NOTICE: J P & Brimelow Chorlton & Didsbury Ltd for themselves and for the vendors or lessors of this property whose agents they are give notice that:

- (i) the particulars are set out as a general outline only for the guidance of intending purchasers or lessees, and do not constitute, nor constitute part of, an offer or contract;
- (ii) all descriptions, dimensions, references to the condition and necessary permissions for use and occupation, and other details are given in good faith and are believed to be correct but any intending purchasers or tenants should not rely on them as statements or representations of fact but must satisfy themselves by inspection or otherwise as to the correctness of each of them;
- (iii) no person in the employment of JP & Brimelow Ltd has any authority to make or give any representation or warranty whatever in relation to this property.



Follow us on Twitter @jpandbrimelows