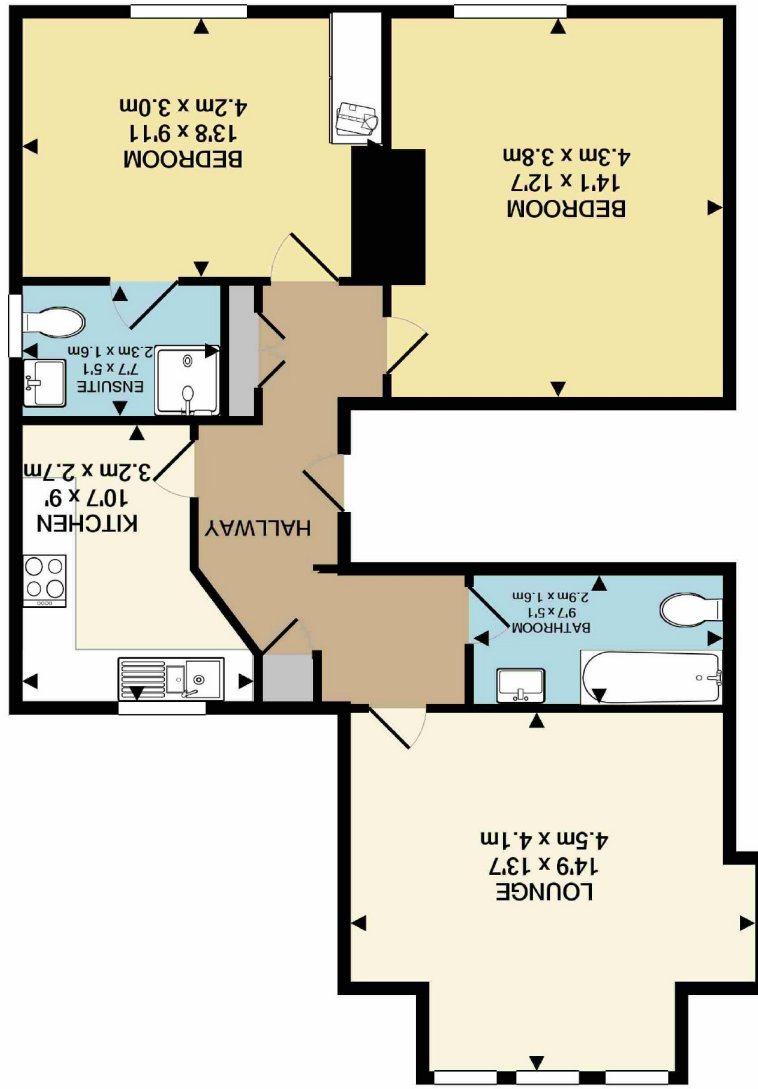


TOTAL APPROX. FLOOR AREA 755 SQ.FT. (70.1 SQ.M.)  
Measurements are approximate. Not to scale. Illustrative purposes only  
Made with Metropix ©2020







**Atwood Road, Didsbury  
M20 6TD**

**£900 Per calendar month**



### The Property

\*\*\* AVAILABLE NOW \*\*\* SEE VIDEO TOUR \*\*\* - A spacious and stylish two double bedroom apartment occupying the first floor of this impressive Victorian villa conversion and for sale with no onward chain. Located just a short stroll from Didsbury Village and the Metrolink. Inside, this spacious property enjoys high ceilings and plenty of natural light. Well presented throughout, comprising in brief: Communal entrance hall with a spindled staircase, private entrance hallway with fitted storage cupboards, large square bay-fronted lounge, fitted kitchen with a range of high gloss finished units, two sizeable double bedrooms, one with an ensuite shower room, and a modern bathroom with chrome fittings. There is parking to the front of the property and to

the rear, a communal garden with seating area. In addition, the flat is warmed by gas central heating and also benefits from uPVC double glazing. Offered on an unfurnished basis. Call now to view - 0161 434 5290

### Directions

From our office proceed along Wilmslow Road in a northerly direction turning right at the traffic lights onto School Lane. Turn left into Beaver Road and then take the first right into Atwood Road. Proceed along Atwood Road and the property can be found on the right hand side clearly indicated by a For Sale sign.



- Great location in Didsbury
- Close to the Metrolink
- Large two bedroom apartment
- Ensuite Shower Room
- Fitted kitchen
- Modern Bathroom
- uPVC dbl glazing & GCH
- Off Street Parking
- Shared Garden
- NO CHAIN

**Postcode** - M20 6TD

**EPC Rating** - D

**Floor Area** - 755 sq ft

**Local Authority** - Manchester City Council

**Council Tax** - Band B

