



Room B, 34 Whitehead Street, Swindon, Wiltshire, SN1 5JX

£500

SWINDON
HOMES 
sales, lettings & mortgages

ONLY £200 DEPOSIT REQUIRED plus one months rent on moving in
Swindon Homes are pleased to offer for rent this FURNISHED, EN-SUITE ROOM in a shared house in Whitehead Street, Swindon. The property offers communal living room, kitchen and bathroom with the bedroom to the second floor.
The bedroom contains bed, wardrobe, bedside unit and en-suite with bath, WC and wash basin

Entrance Hall

Communal Living Room

Communal Kitchen

Bedroom

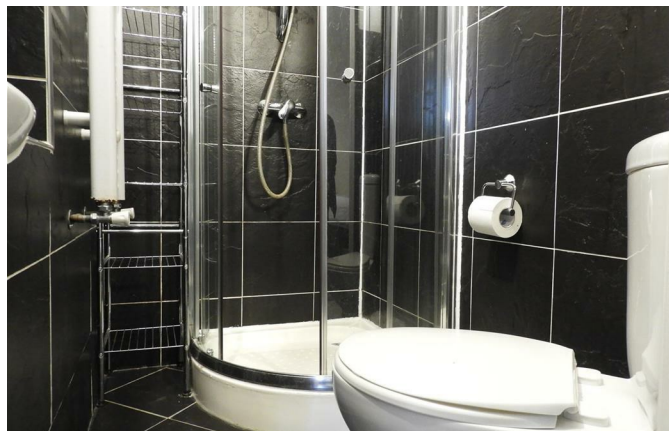
Window to rear aspect, double bed, bedside table, double wardrobe, radiator

En-Suite

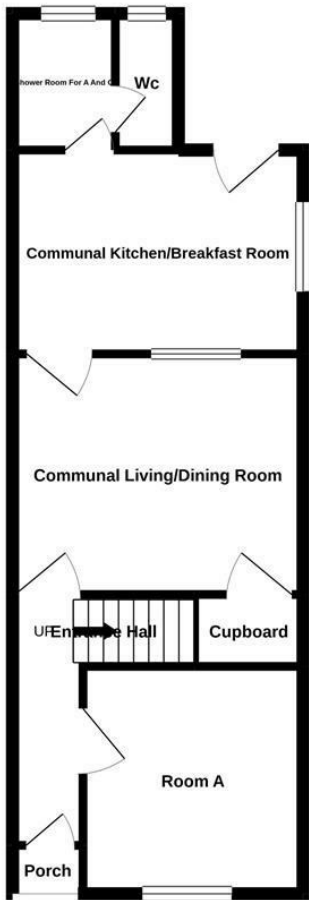
Corner shower cubicle, WC, wash basin



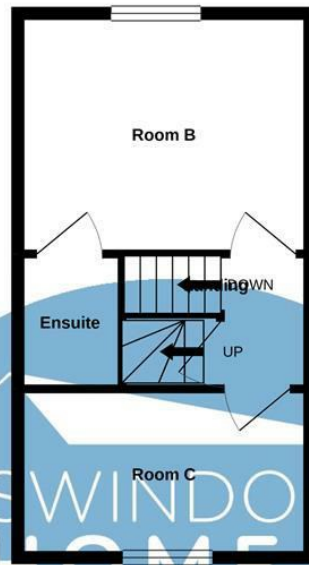




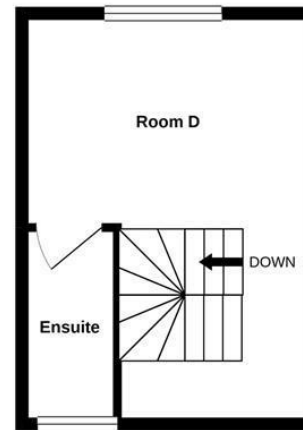
GROUND FLOOR
477 sq.ft. (44.4 sq.m.) approx.



1ST FLOOR
318 sq.ft. (29.5 sq.m.) approx.



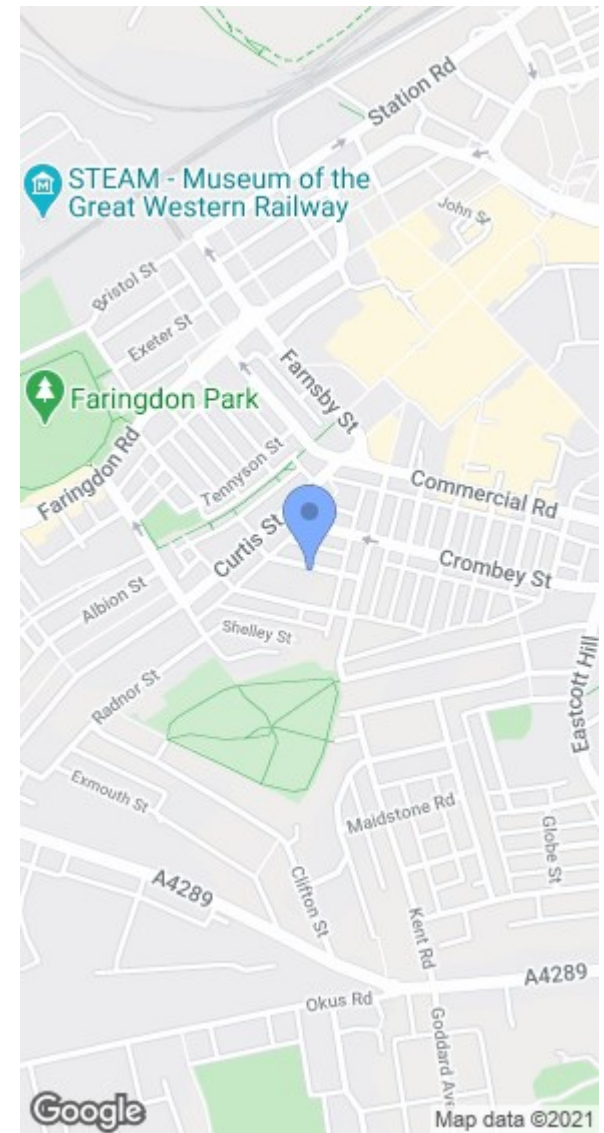
2ND FLOOR
240 sq.ft. (22.3 sq.m.) approx.



SWINDON
HOMES
sales, lettings & mortgages

TOTAL FLOOR AREA: 1035 sq.ft. (96.2 sq.m.) approx.

Whilst every attempt has been made to ensure the accuracy of the floorplan contained here, measurements of doors, windows, rooms and any other items are approximate and no responsibility is taken for any error, omission or mis-statement. This plan is for illustrative purposes only and should be used as such by any prospective purchaser. The services, systems and appliances shown have not been tested and no guarantee as to their operability or efficiency can be given.
Made with Metropix ©2021



Energy Efficiency Rating		Environmental Impact (CO ₂) Rating			
	Current	Potential		Current	Potential
Very energy efficient - lower running costs			Very environmentally friendly - lower CO ₂ emissions		
(92 plus) A			(92 plus) A		
(81-91) B			(81-91) B		
(69-80) C			(69-80) C		
(55-68) D			(55-68) D		
(39-54) E			(39-54) E		
(21-38) F			(21-38) F		
(1-20) G			(1-20) G		
Not energy efficient - higher running costs			Not environmentally friendly - higher CO ₂ emissions		
England & Wales		EU Directive 2002/91/EC	England & Wales		EU Directive 2002/91/EC