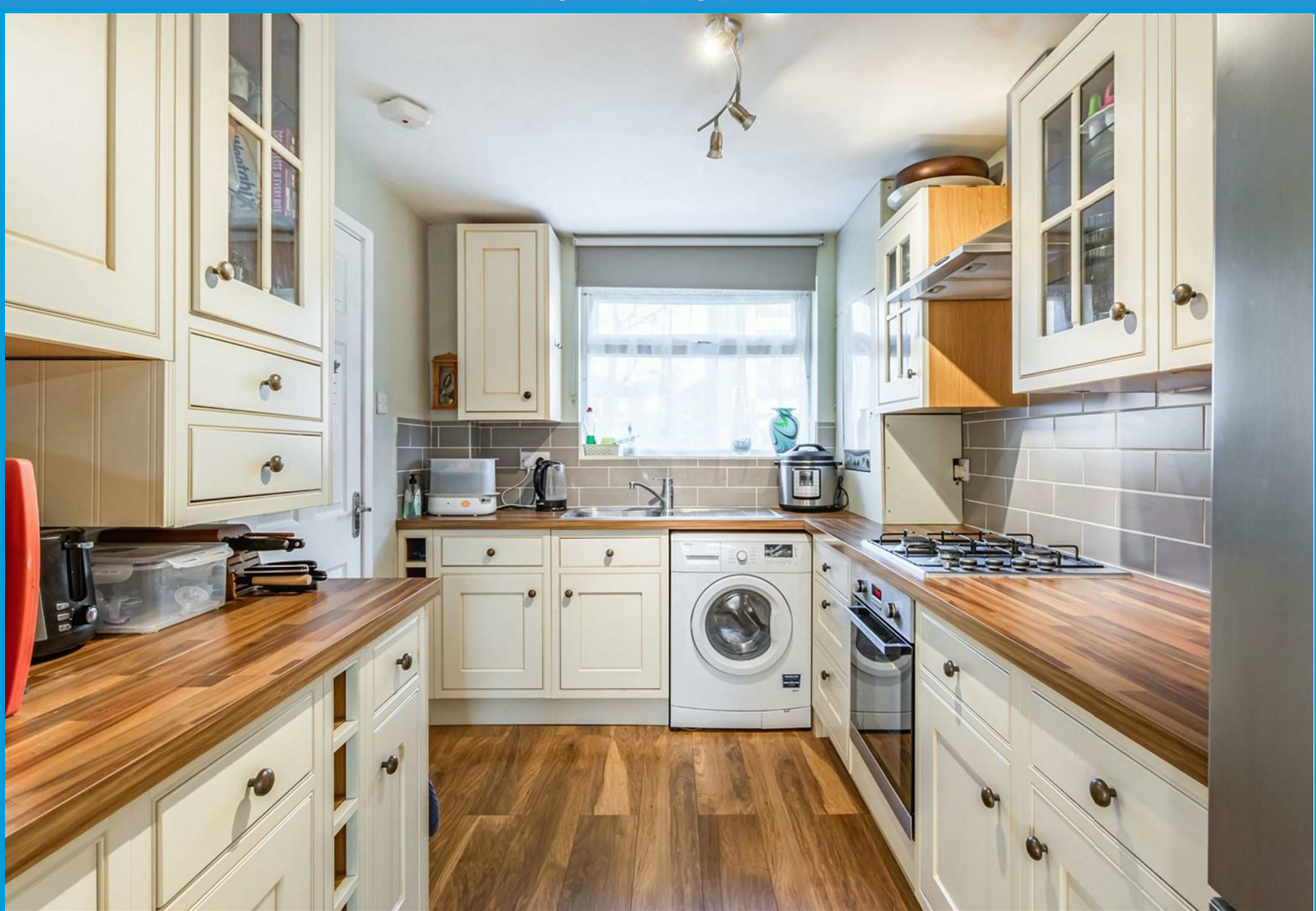


# CAVENDER

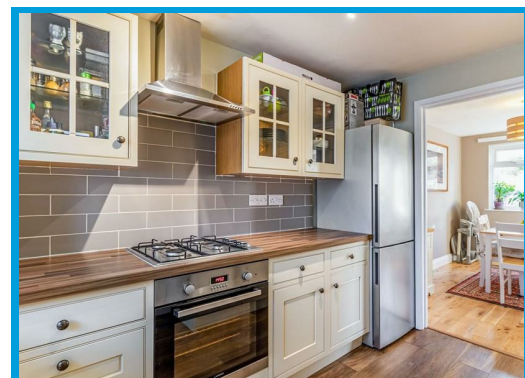
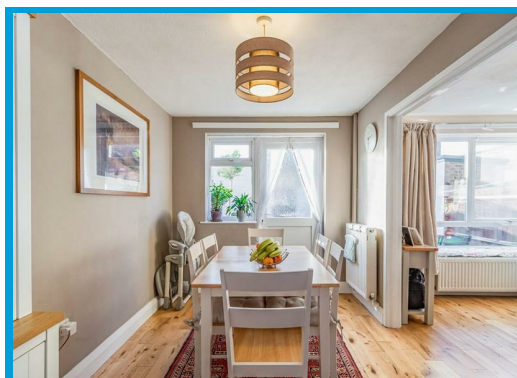
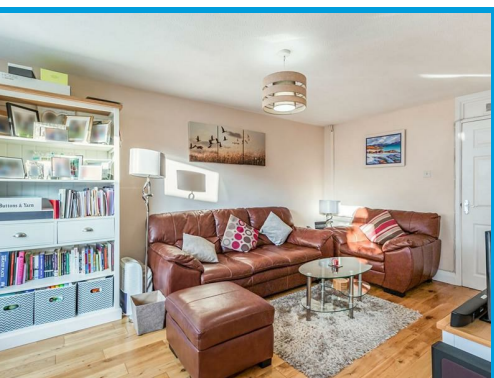
ESTATE AGENT



Smith Street, Surbiton, Surrey KT5 8SW

Asking Price £425,000

A recently refurbished and beautifully presented two double bedroom house located close to Surbiton station and within catchment of sought after local schools.



# Description

Positioned in a popular residential location within the catchment of sought after schools, this stunning two bedroom house offers modern and well presented accommodation throughout.

On the ground floor, the accommodation comprises an entrance hall leading to a large lounge which overlooks the rear garden, a high specification recently fitted kitchen and a dining room.

On the first floor, the property comprises a large master bedroom, a further double bedroom with built in wardrobes, a modern bathroom with shower and a separate WC.

The property boasts wood flooring throughout the ground floor, gas central heating and has been finished to an excellent standard throughout.

Further features include a private rear garden and the property is conveniently positioned for local shops, bus routes and amenities.

