



Parkdale Gardens, Blackburn

We are so excited to welcome to the market this beautifully presented and utterly charming detached residence that has so much going for it! Located on the ever popular Oakdale development, with excellent access to popular local schools and commuter links, we can't recommend internal viewing highly enough.

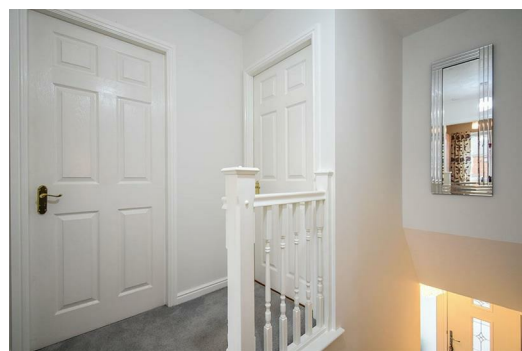
Boasting four bedrooms, an en-suite, stunning kitchen/diner area, a conservatory plus a snug which could be used as another bedroom with access to it's own shower room. The property is immaculate throughout and is true credit to the current owner and would surely suit modern family living for years to come.

- Beautiful Detached Home
- Additional Snug Room
- Stunning Kitchen Area
- Immaculately Presented
- Four Bedrooms
- Ground Floor Shower Room
- Fantastic Location
- En Suite
- Conservatory
- Ideal Family Home

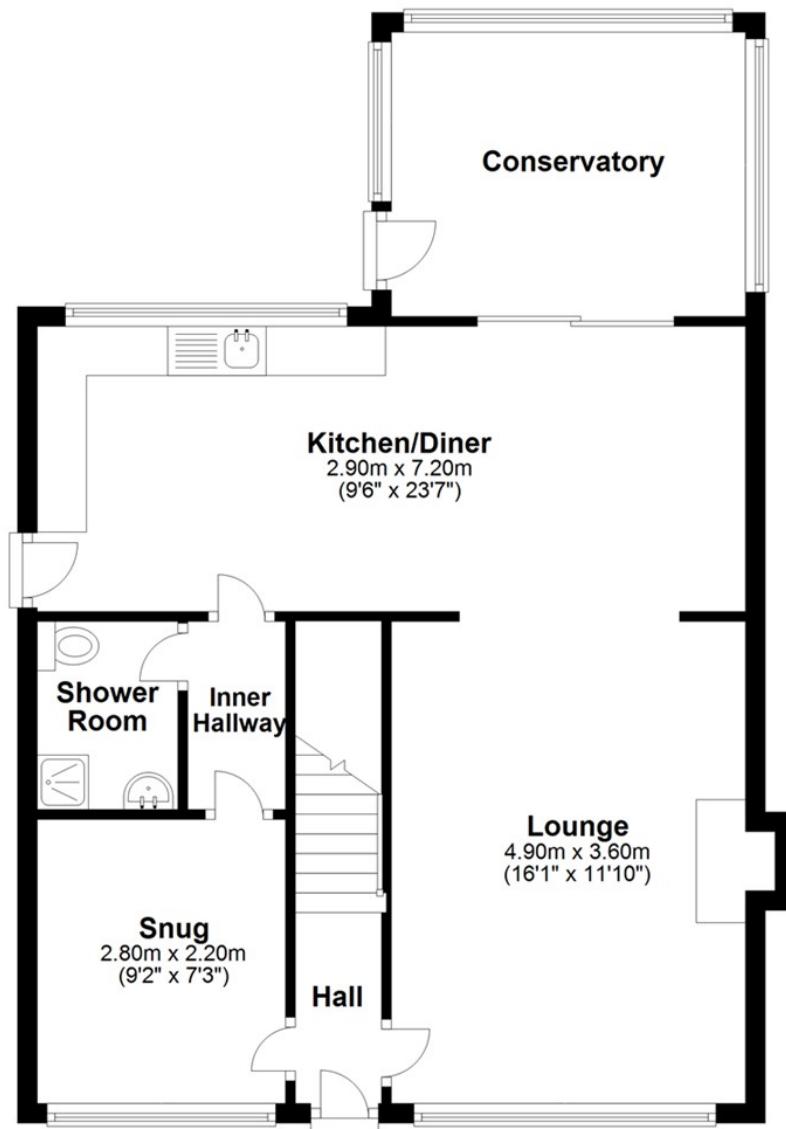
Offers over £240,000

Parkdale Gardens, Blackburn





Ground Floor



Energy Efficiency Rating		
	Current	Potential
Very energy efficient - lower running costs		
(92 plus) A		82
(81-91) B		
(69-80) C	73	
(55-68) D		
(39-54) E		
(21-38) F		
(1-20) G		
Not energy efficient - higher running costs		
England & Wales EU Directive 2002/91/EC		
Environmental Impact (CO ₂) Rating		
	Current	Potential
Very environmentally friendly - lower CO ₂ emissions		
(92 plus) A		
(81-91) B		
(69-80) C		
(55-68) D		
(39-54) E		
(21-38) F		
(1-20) G		
Not environmentally friendly - higher CO ₂ emissions		
England & Wales EU Directive 2002/91/EC		