

# BELVOIR!

THORESBY COURT, CORBY, NN18 0EJ

OFFERS OVER £130,000





Renovated from top to bottom to an excellent standard is this spacious two double bedroom maisonette which is within easy reach of all local amenities & the town centre. Some renovations include new kitchen, bathroom & boiler including designer radiators & the creation of an entrance hall.

The accommodation is reached through a secure telephone entry system and is located on the top floor. The spacious interior provides a spacious lounge/diner & enjoys a balcony overlooking the open green space. The modern fitted kitchen provides ample cupboard space with some integral appliances.

Upstairs you will find two double bedrooms with one enjoying a balcony, both bedrooms are serviced by a modern family three piece bathroom complete with pea shaped bath.

This property would make a perfect investment or as your first steps on the property ladder.

EPC Rating D



**ENTRANCE HALL** Door to front, laminate to flooring, downlights.

**LOUNGE/DINER** 18' 11" x 18' 0" (5.79m x 5.51m)  
Double glazed window to side, TV point, radiator, laminate to flooring, downlights, doors onto external balcony.

**KITCHEN** 9' 8" x 8' 0" (2.97m x 2.46m) Double glazed window to side, fitted kitchen comprising of wall and base level units, sink and drainer, work surfaces over, tiling to splashbacks, electric oven, gas hob, plumbing for washing machine, space for fridge freezer, central heating boiler, laminate to floor, downlights, radiator.

#### **FIRST FLOOR LANDING**

**BEDROOM ONE** 12' 2" x 8' 11" (3.71m x 2.74m)  
Double glazed window side, laminate to flooring, ceiling light, radiator.

**BEDROOM TWO** 15' 7" x 8' 11" (4.75m x 2.72m)  
Double glazed windows to side, laminate to flooring, ceiling light, radiator, door to external balcony.



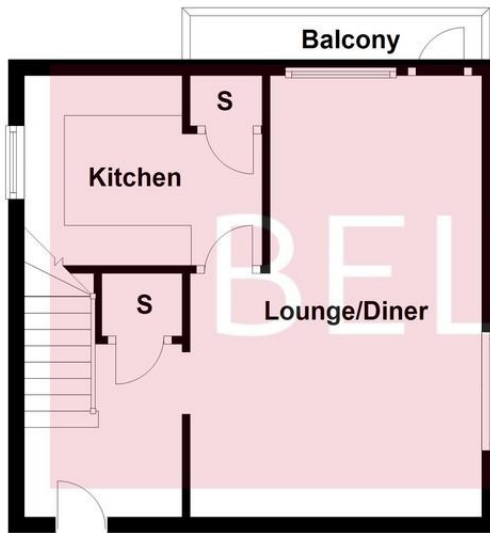
**BATHROOM** 6' 5" x 5' 10" (1.98m x 1.78m) Double glazed window to side, pea shaped bath with mixer taps and shower over, low level WC, vanity unit with inset wash hand basin, heated towel rail, part tiled walls, downlights.

**Viewing is advised to fully appreciate the accommodation on offer!**



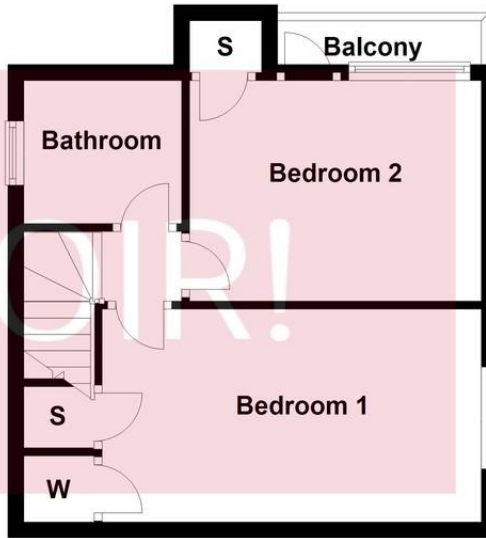
### Ground Floor

Approx. 31.5 sq. metres (339.6 sq. feet)



### First Floor

Approx. 32.2 sq. metres (346.8 sq. feet)



Total area: approx. 63.8 sq. metres (686.3 sq. feet)

We endeavour to make our sales particulars accurate and reliable, however, they do not constitute or form part of an offer or any contract and none is to be relied upon as statements of representation or fact. Any service, system and appliances listed in this specification have not been tested by us and no guarantee as to their operating ability or efficiency is given. All measurements have been taken as a guide to prospective buyers only, and are not precise. If you require clarification or further information on any points, please contact us, especially if you are travelling some distance to view. Fixture and fittings other than those mentioned are to be agreed with the seller by separate negotiation. Plan produced using PlanUp.

