



*Jordanfishwick*

FALLOWFIELD  
Thorne House



## Thorne House, Fallowfield M14 6DW £169,950



### The Property

A light and spacious top floor apartment enjoying an enviable position within a purpose built development that enjoys an excellent location just off Wilmslow Road, offering easy access to the universities and Manchester City Centre. With open views to the rear over allotments the accommodation comprises: Entrance hall, L-shaped light and spacious lounge/dining room, through to the fitted kitchen, two generous bedrooms, shower room with white suite and separate W/C. Externally, there are well tended communal grounds, private residents' parking. Newly installed electric heating, double glazing and a garage completes the specification. Viewings highly recommended. No chain.

### Directions

M14 6DW

- A two double bedroom top floor apartment
- Large open plan lounge/dining room
- Sought after development off Wilmslow road opposite Platt Fields Park
- Large landscaped gardens
- Open views to rear over allotments
- Allocated parking & Garage

**Postcode** - M14 6DW

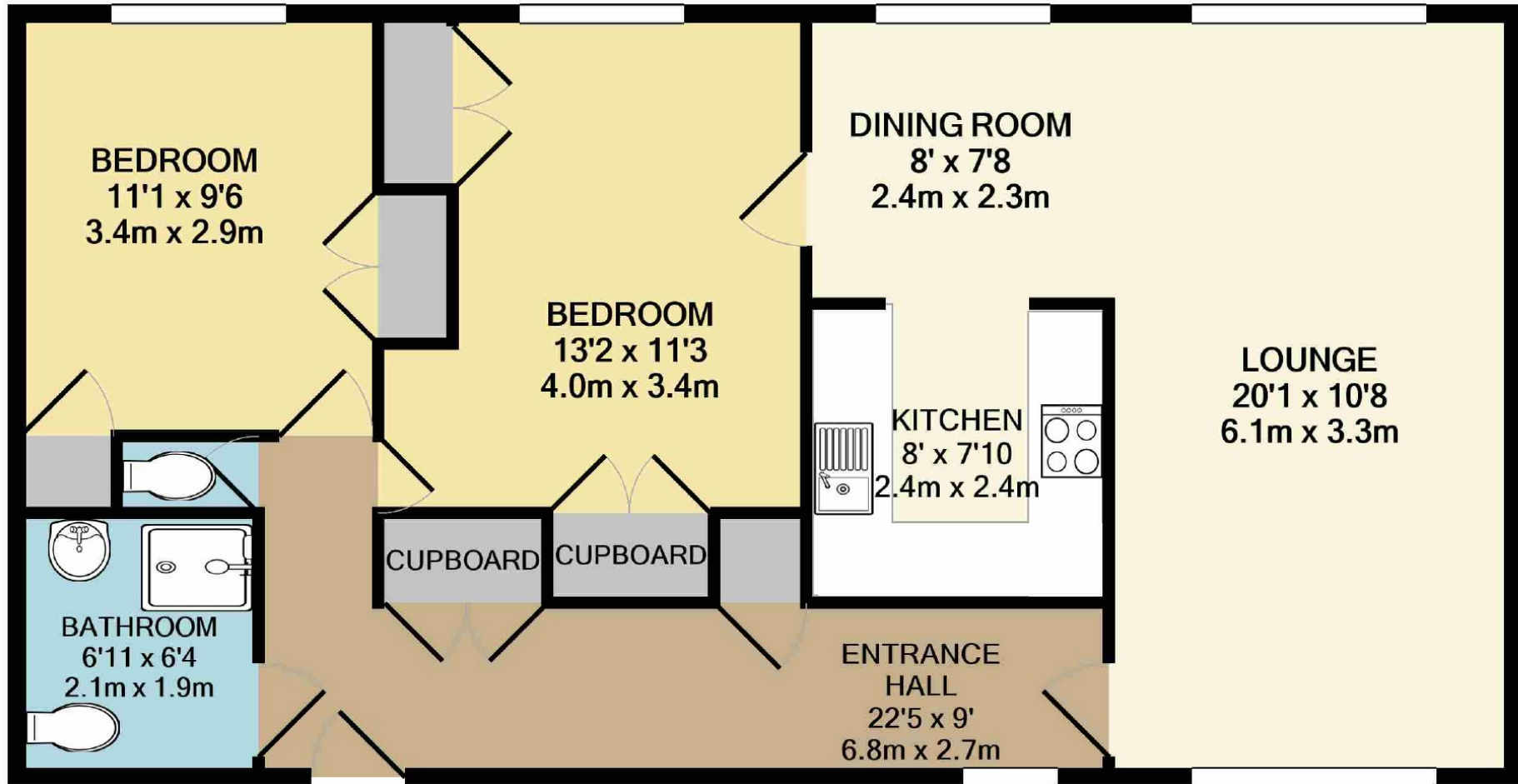
**EPC Rating** - E

**Floor Area** - 793 sq ft

**Local Authority** - Manchester City Council

**Council Tax** - Band B





**TOTAL APPROX. FLOOR AREA 793 SQ.FT. (73.7 SQ.M.)**

Measurements are approximate. Not to scale. Illustrative purposes only

Made with Metropix ©2021



These particulars are believed to be accurate but they are not guaranteed and do not form a contract. Neither Jordan Fishwick nor the vendor or lessor accept any responsibility in respect of these particulars, which are not intended to be statements or representations of fact and any intending purchaser or lessee must satisfy himself by inspection or otherwise as to the correctness of each of the statements contained in these particulars. Any floorplans on this brochure are for illustrative purposes only and are not necessarily to scale.

Offices also at: Wilmslow, Macclesfield, Hale, Sale, Chorlton, Glossop, Manchester & Salford

757-759 Wilmslow Road, Didsbury Village, Manchester, M20

**0161 445 4480**

didsbury@jordanfishwick.co.uk

www.jordanfishwick.co.uk