



**Helix Road, Brixton, SW2**

**£475,000**

1 bedroom flat - conversion for sale

## Property Details

A beautifully presented one bedroom flat, occupying the top floor of a handsome Victorian terraced house on the quiet and leafy Helix Road, a highly sought-after residential road, perfectly located in the heart of the Josephine conservation area. A ten-twelve minute walk from the amenities and transport links in central Brixton. Brockwell Park is also conveniently located within minutes by foot. This loft-style property is bursting with character and comes beautifully finished. An open-plan kitchen/ reception room is the heart of the property, with integrated appliances, room for a large dining table and plenty of room to relax and unwind. Multiple skylights allow light and air to flood into this amazing space creating a lovely atmosphere throughout. The bedroom resides peacefully at the rear of the building, overlooking the surrounding gardens below, with plenty of space and built-in storage. A modern, sleek bathroom is located conveniently next to the bedroom.

## Features

- One double bedroom
- Victorian conversion
- Bright and airy throughout
- Over 670 square feet of internal living space
- Popular quiet residential street
- A short walk from Brockwell Park
- A ten-twelve minute walk to Brixton tube station

Council tax band A    EPC rating C (77)





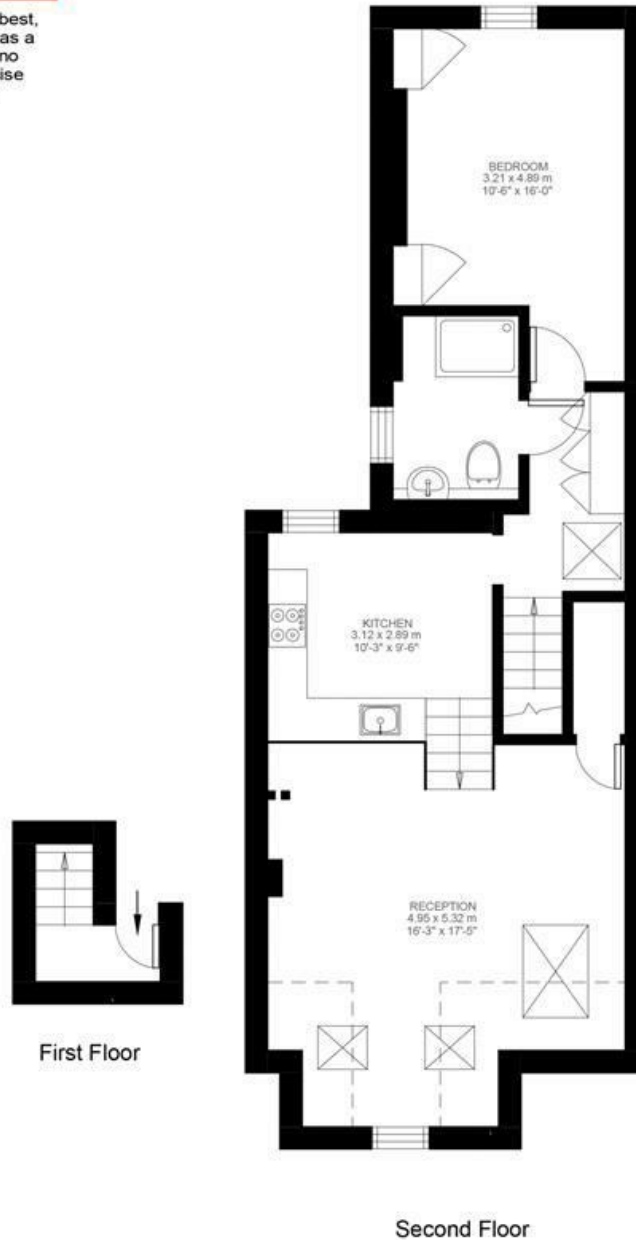
# Helix Road

## 1 Bedroom Flat

Approx internal area:

**674 sqft 63 sqm**

While we do try our very best, floor plans are produced as a guide only and we take no responsibility for the precise accuracy with which any property is represented



Helix Road, Brixton, SW2

