

**Rozel Road, Clapham, SW4**

2 bedroom flat to let

£430 Per Week

Furnished

Property Details

This is a great two bedroom flat in a perfect location only seven minutes from Wandsworth Road overground station and around a ten minute walk to Clapham Common tube station. The flat itself comprises of a large, modern, open plan kitchen and reception room which opens out onto a courtyard garden ideal for entertaining in the summer months - and also allowing heaps of natural light to enter the property. Both bedrooms are good sized doubles. One comes complete with an en-suite bathroom and the other is adjacent to the second bathroom making this a perfect flat for a couple of professional sharers. The property also includes a basement for extra storage.

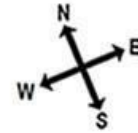
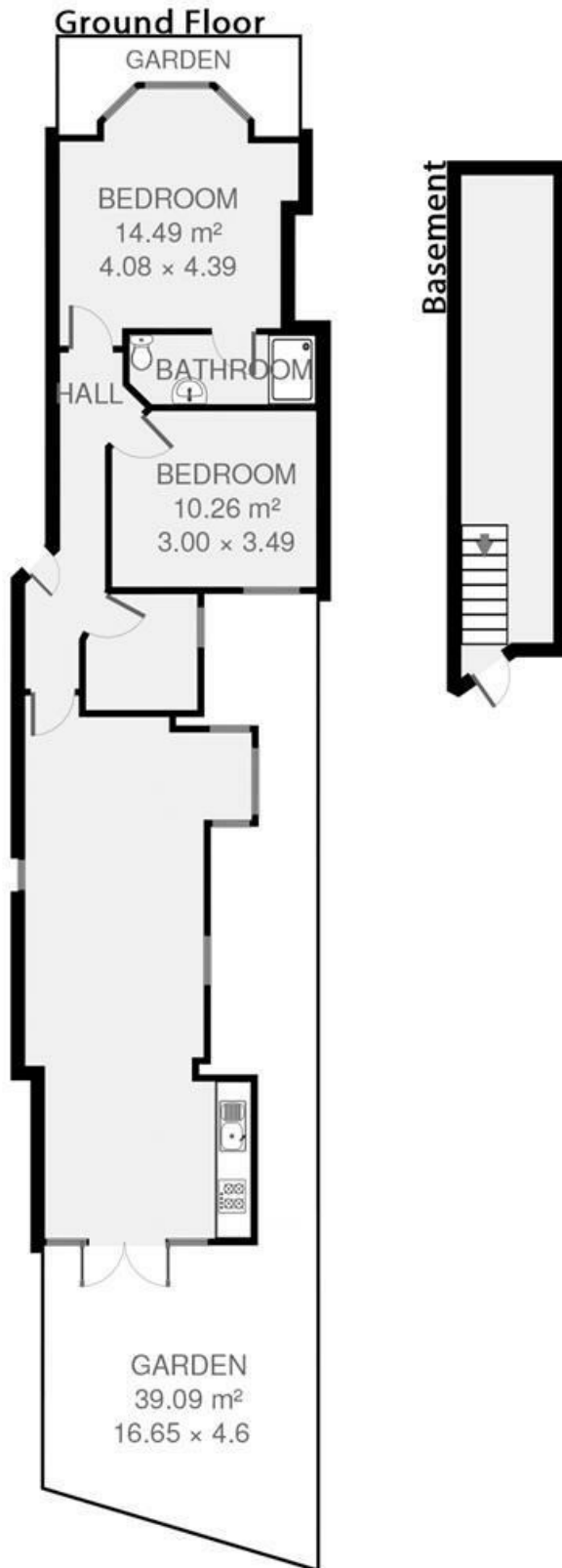
Council tax band D EPC rating D (65)

Features

- Private garden
- Victorian conversion
- Around a 7 minute walk to Clapham Common
- Around a 10 minute walk to Clapham Common underground
- Two bedrooms
- Two bathrooms
- Open plan kitchen and reception



Rozel Road



2 bed Flat.

Approx internal area:

862 sqft 80 sqm

While we do try our very best, floor plans are produced as a guide only and we take no responsibility for the precise accuracy with which any property is represented

Rozel Road, Clapham, SW4

