

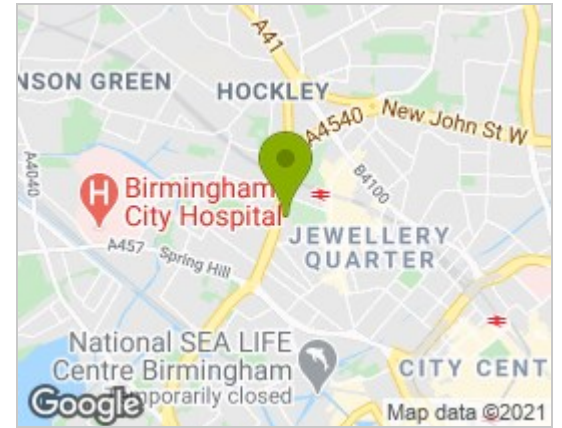




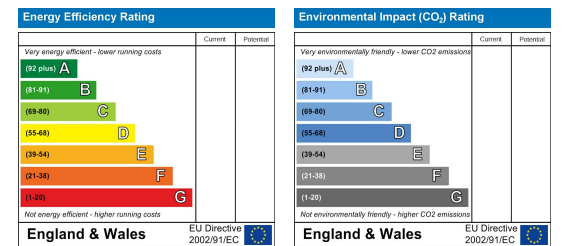
## Floor Plan



## Area Map



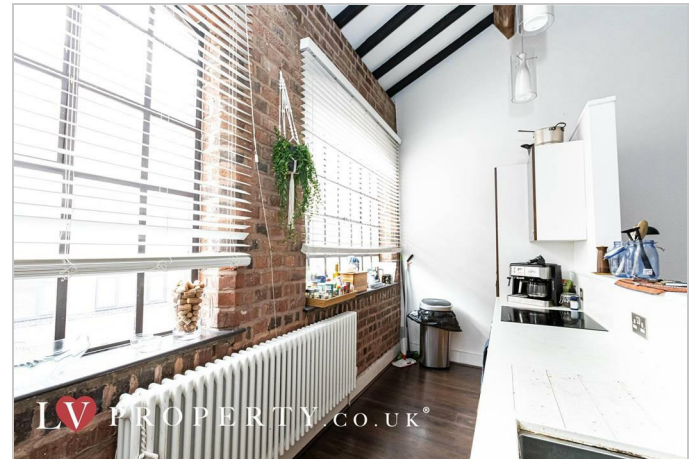
## Energy Efficiency Graph



## Viewing

Please contact our LV PROPERTY Office on 01212857575 if you wish to arrange a viewing appointment for this property or require further information.

- STUNNING TWO BEDROOM
- GRADE II LISTED TOWNHOUSE
- HIGH CEILINGS WITH WOODEN
- STRUCTURE THROUGHOUT BEAM
- SEPERATE STUDY ROOM
- SECURE UNDERGROUND PARKING
- SITUATED ON A PRIVATE ROAD
- SMALL GARDEN TO THE REAR OF PROPERTY



LV PROPERTY are proud to present this stunning two bedroom townhouse. A unique opportunity to live in a truly exceptional, Grade II listed building with secure under ground parking.

The property benefits from high ceilings and wooden beams running throughout. An added benefit includes large, traditional, sash windows on each side of the lounge area allowing plenty of natural light. This sensational property also comes with a shared court yard area. On the top floor you have a large open plan lounge with a fully fitted, luxury kitchen along with a dining / breakfast area.

This superb town house has been tastefully renovated to provide stunning accommodation. Also offering a personal office space, perfect for working from home and ample space in the living area alone. This property can not be missed out on as it offers City living in a truly exceptional town house.

The townhouse boasts secure underground parking and is offered on an unfurnished basis.

A viewing is highly recommended.



These particulars, whilst believed to be accurate are set out as a general outline only for guidance and do not constitute any part of an offer or contract. Intending purchasers should not rely on them as statements of representation of fact, but must satisfy themselves by inspection or otherwise as to their accuracy. No person in this firms employment has the authority to make or give any representation or warranty in respect of the property.



0121 285 7575  
www.lvproperty.co.uk

157c Warstone Lane, Jewellery Quarter,  
Birmingham, West Midlands, B18 6NZ