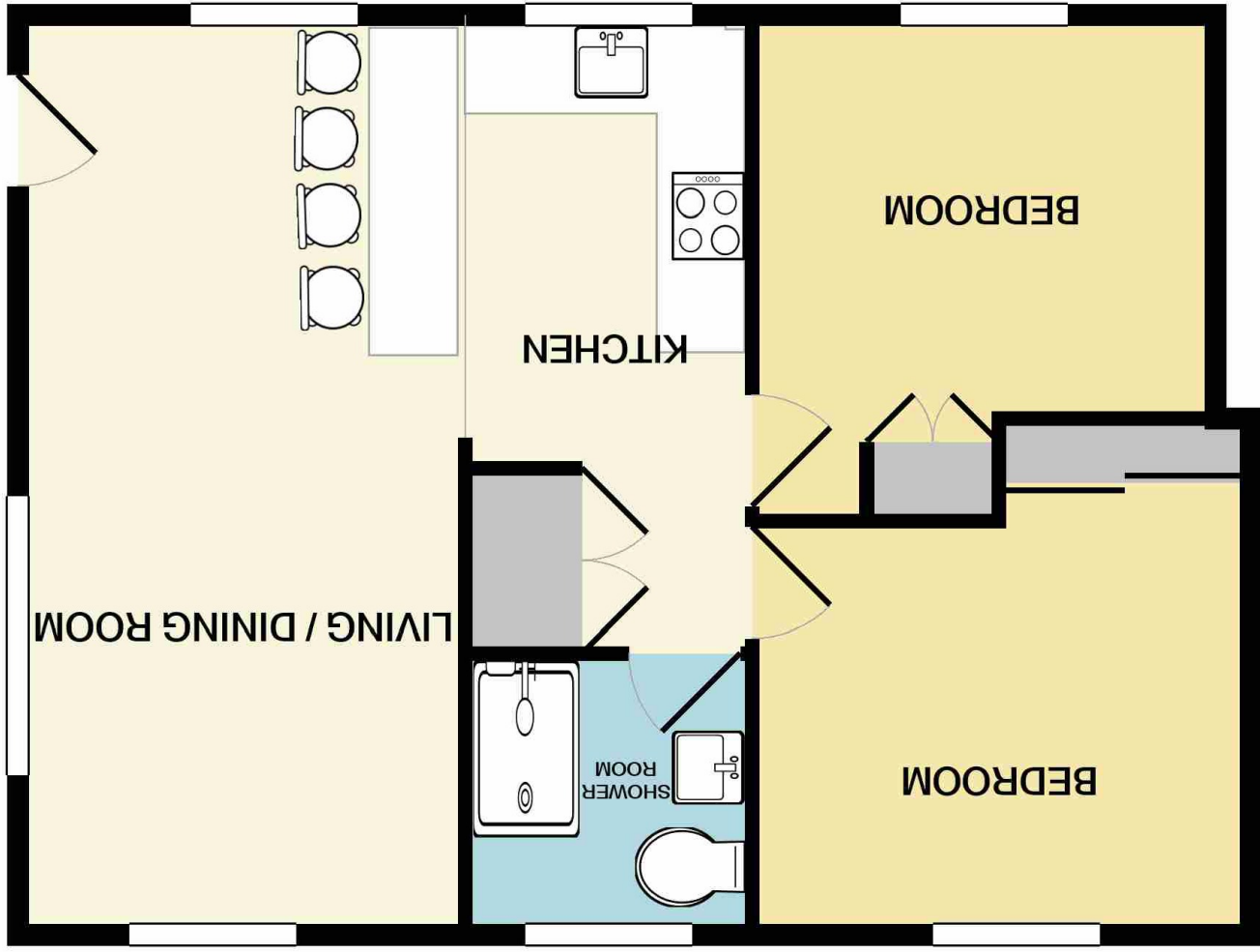


Measurements are approximate. Not to scale. Illustrative purposes only
Made with Metropix ©2021



Southview House, Apt 2 51 Palmerston Street,
Bollington, Macclesfield, Cheshire SK10 5PW

£209,000



The Property

**** BRAND NEW STUNNING APARTMENTS IN THE HEART OF THE VILLAGE WITH ALLOCATED PARKING ****
BOLLINGTON is surrounded by some of the most stunning countryside as well as being ideal for keen walkers and within walking distance to local shops, bars and restaurants yet within easy reach of Macclesfield town centre and all its amenities. These beautifully appointed apartments are complimented with fabulous **QUALITY FITTED** kitchens complete with **NEFF** appliances and **STYLISH SHOWER ROOMS** as well as having a communal lawned garden and **ALLOCATED PARKING**. The property comprises in brief; open plan living/dining/kitchen with **BI-FOLDING** doors with iron railings and over looking the River Dean, inner

hallway, two double bedrooms (both with fitted wardrobes) and stylish shower room. Externally, there is a communal lawned garden and allocated parking space.

Locality

Location, Directions, Open Plan Living/
Dining Kitchen, Living/Dining Area
20'6 x 10'0 (6.25m x 3.05m), Kitchen
10'3 x 7'4 (3.12m x 2.24m), Inner
Hallway, Bedroom One 11'1 x 9'2
(3.38m x 2.79m), Bedroom Two 10'2 x
9'0 (3.10m x 2.74m), Stylish Shower
Room, Outside, Communal Garden,
Allocated Parking, Tenure

Postcode - SK10 5PW

EPC Rating -

Floor Area - sq ft

Local Authority -

Council Tax - Band

