

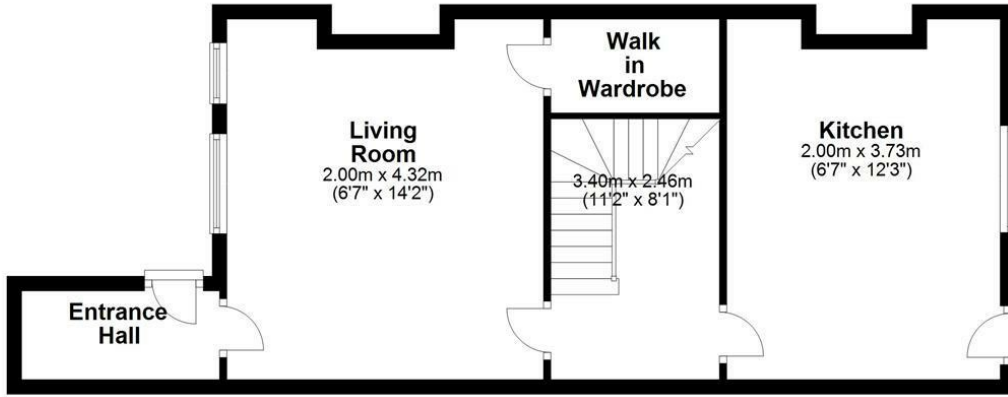


18 Lower M`Ette 18 Southleigh, Southleigh Road, Clifton, Bristol, BS8 2BH

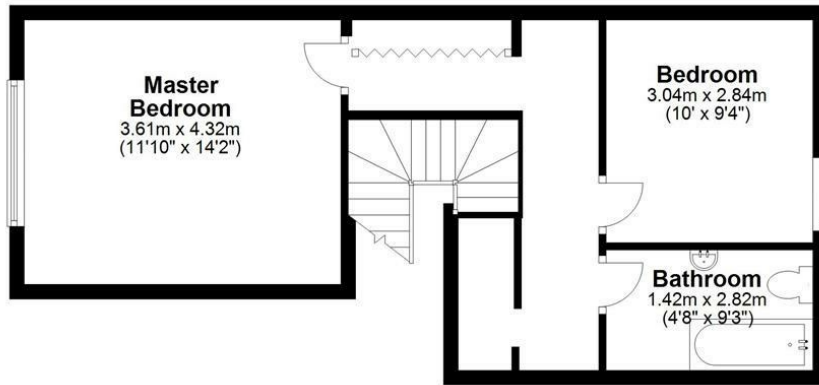
A charming period maisonette that has been lovingly refurbished by the current owners, which is located in this peaceful residential road close to the Clifton Lido and within a short walk of the Clifton Triangle. The flat is accessed by the front courtyard and the entrance hallway opens to the reception room with wood floors and period fireplace grate. To the rear of the lower floor is a spacious kitchen/diner complete with appliances and a range cooker. The staircase to the ground floor level leads up to the modern bathroom with a shower over the bath, the second double bedroom and the lovely master bedroom with its high ceilings and decorative fireplace. To the rear of the flat there is also a private patio style garden. EPC rating E (54).

£1,350 PCM* Fees Apply

Ground Floor



First Floor



Whilst Hydes of Bristol endeavours to ensure floorplans be as accurate as possible, the measurements of any items within the property (such as windows, doors and walls) are approximate and no responsibility can be taken for any error.
Plan produced using PlanUp.

