



Totteridge Park, Totteridge, N20 8NH
£850,000



REAL ESTATES

Estate Agents - Residential Sales - Investments - Lettings

A charming 2 bedroom cottage arranged over 2 floors and comprising open plan reception/kitchen with access to a private terrace, 2 bedrooms, bathroom/wc, cellar storage area and 2 allocated parking spaces.

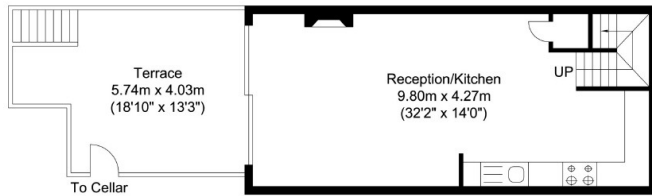
Set in landscaped grounds of 5 acres and protected by electric gated entrance.

For further information, please go to:

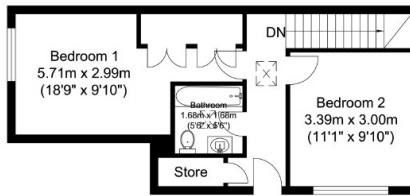
<http://www.totteridgepark.com>



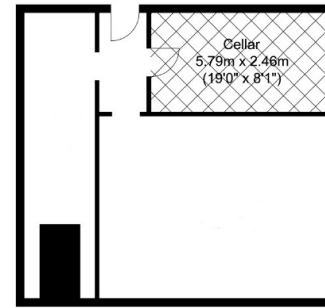




Lower Ground Floor
Approximate Floor Area
450.36 sq. ft.
(41.84 sq. m)

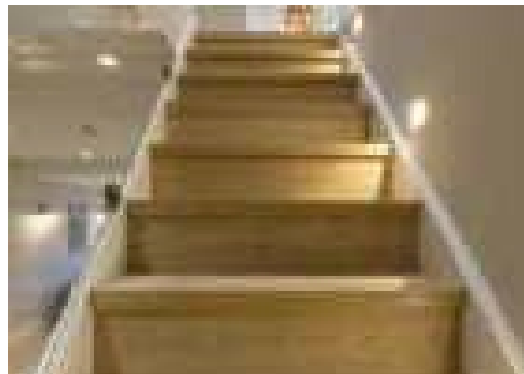


Ground Floor
Approximate Floor Area
401.70 sq. ft.
(37.32 sq. m)



Garden Cottage

Total Floor Area
Approximate Floor Area
1002 sq. ft.
(93.40 sq. m)



Totteridge office: 74 Totteridge Lane, Totteridge, London N20 8QG

e : totteridge@realestates-wsp.co.uk

t : 020 8445 3132

f : 020 8445 4492

w : www.realestates-wsp.co.uk



REAL ESTATES

Estate Agents - Residential Sales - Investments - Lettings