



19 Slate Street

Morrison, Swansea, SA6 8AA

Offered for sale with no Chain this lovely two bedroom terrace home situated in the centre of Morrison within walking distance to Morrison shops and amenities.

The accommodation comprises of an entrance porch, dining room, lounge, kitchen and bathroom on the ground floor. There are two double bedrooms on the first floor. The property benefits from gas central heating, double glazing and an enclosed rear garden. An ideal first home and viewing is recommended. EPC Rating - D.

£99,950

19 Slate Street

Morrison, Swansea, SA6 8AA



- MIDDLE TERRACE
- TWO DOUBLE BEDROOMS
- TWO RECEPTION ROOMS
- GROUND FLOOR BATHROOM
- ENCLOSED REAR GARDEN
- IDEAL FIRST HOME
- VIEWING RECOMMENDED

The Accommodation Comprises

Ground Floor

Porch

Dining Room

10'5" x 10'11" (3.18m x 3.33m)

Lounge

14'6" x 14'2" (4.42m x 4.32m)

Kitchen

14'2" x 7'1" (4.32m x 2.16m)

Rear Porch

Bathroom

First Floor

Landing

Bedroom 1

10'5" x 14'2" (3.18m x 4.32m)

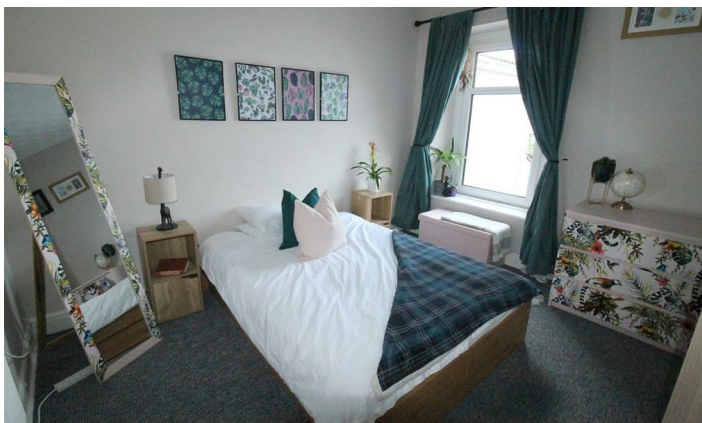
Bedroom 2

11'2" x 10'11" (3.41m x 3.33m)

External



Directions



Floor Plan



These particulars, whilst believed to be accurate are set out as a general outline only for guidance and do not constitute any part of an offer or contract. Intending purchasers should not rely on them as statements of representation of fact, but must satisfy themselves by inspection or otherwise as to their accuracy. No person in this firm's employment has the authority to make or give any representation or warranty in respect of the property.

Energy Efficiency Rating		Current	Potential	Environmental Impact (CO ₂) Rating		Current	Potential
Very energy efficient - lower running costs				Very environmentally friendly - lower CO ₂ emissions			
(92 plus) A			87	(92 plus) A			
(81-91) B				(81-91) B			
(69-80) C				(69-80) C			
(55-68) D		63		(55-68) D			
(39-54) E				(39-54) E			
(21-38) F				(21-38) F			
(1-20) G				(1-20) G			
Not energy efficient - higher running costs				Not environmentally friendly - higher CO ₂ emissions			
England & Wales		EU Directive 2002/91/EC		England & Wales		EU Directive 2002/91/EC	