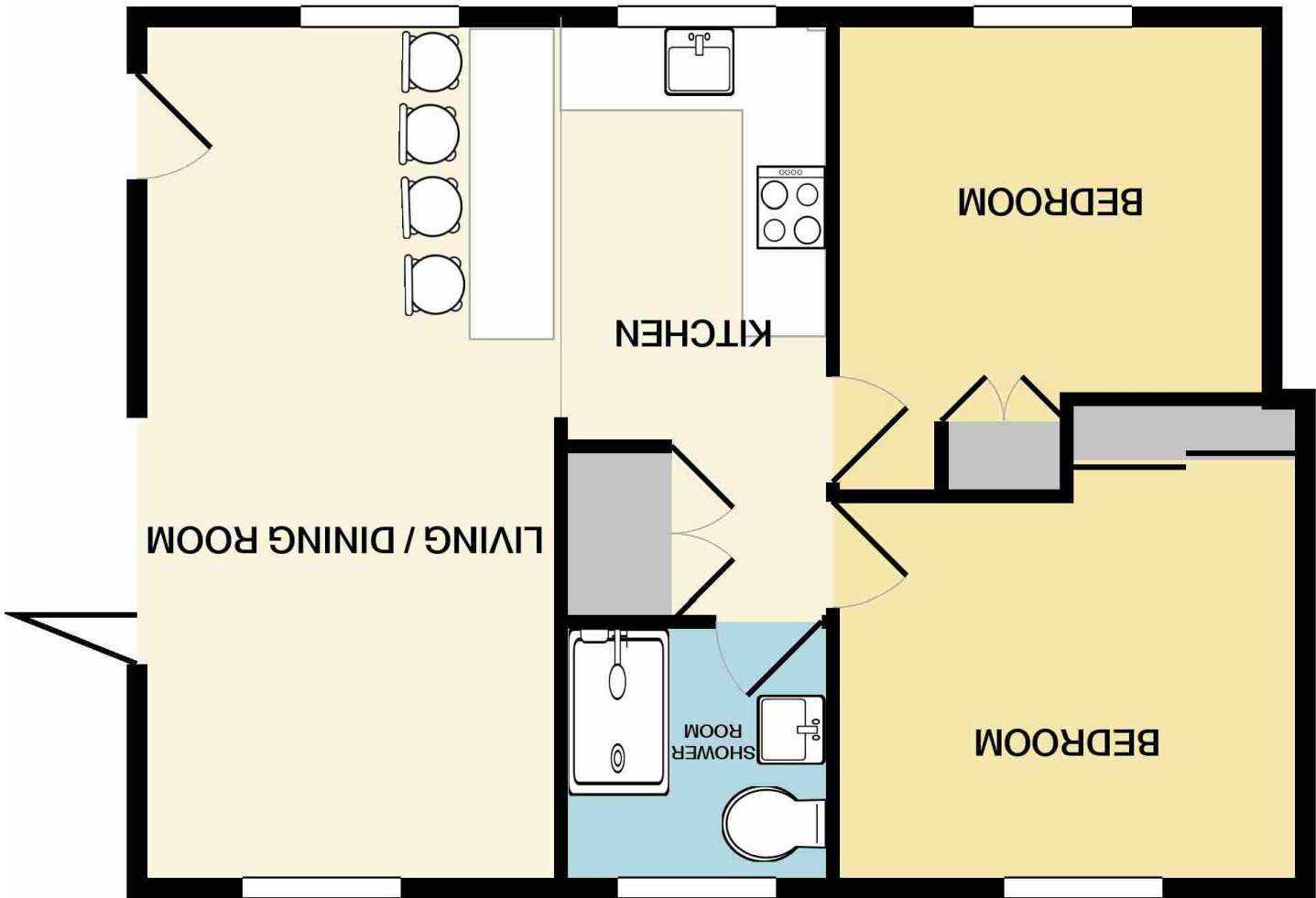


These particulars are believed to be accurate but they are not guaranteed and do not form a contract. Neither Jordan Fishwick nor the vendor or lessor accept any responsibility in respect of these particulars, which are not intended to be statements or representations of fact and any intending purchaser or lessee must satisfy himself by inspection or otherwise as to the correctness of each of the statements contained in these particulars. Any floorplans on this brochure are for illustrative purposes only and are not necessarily to scale.

Measurements are approximate. Not to scale. Illustrative purposes only  
Made with Metropix ©2021







### The Property

**\*\* BRAND NEW STUNNING APARTMENTS IN THE HEART OF THE VILLAGE WITH ALLOCATED PARKING \*\***  
BOLLINGTON is surrounded by some of the most stunning countryside as well as being ideal for keen walkers and within walking distance to local shops, bars and restaurants yet within easy reach of Macclesfield town centre and all its amenities. These beautifully appointed apartments are complimented with fabulous **QUALITY FITTED** kitchens complete with **NEFF** appliances and **STYLISH SHOWER ROOMS** as well as having a communal lawned garden and **ALLOCATED PARKING**. The property comprises in brief; open plan living/dining/kitchen with **BI-FOLDING** doors opening to the **PRIVATE** courtyard, inner hallway, two

double bedrooms (both with fitted wardrobes) and stylish shower room. Externally, there is a communal lawned garden and allocated parking space.

### Locality

Location, Directions, Open Plan Living/  
Dining Kitchen, Living/Dining Area  
20'6 x 10'0 (6.25m x 3.05m ), Kitchen  
10'3 x 7'4 (3.12m x 2.24m ), Inner  
Hallway, Bedroom One 11'1 x 9'2  
(3.38m x 2.79m ), Bedroom Two 10'2 x  
9'0 (3.10m x 2.74m ), Stylish Shower  
Room, Outside, Private Courtyard,  
Communal Garden, Allocated Parking,  
Tenure

**Postcode** - SK10 5PW

**EPC Rating** -

**Floor Area** - sq ft

**Local Authority** -

**Council Tax** - Band

Southview House, Apt 1 51 Palmerston Street,  
Bollington, Macclesfield, Cheshire SK10 5PW

**£209,000**

