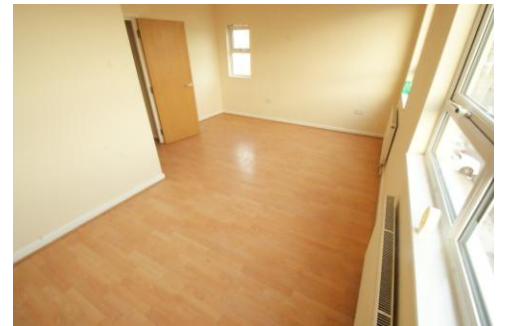




Victoria Road, Romford

Rent **£900 pcm**



One bedroom first floor flat available to rent, located in the heart of Romford. The property is located with less than a 5 minute walk to Romford Station, shopping center as well as bus stops offering several different routes. Comprising of a fitted kitchen with integrated appliances, double bedroom, living area and fitted white bathroom suite. Laminated flooring throughout.

- **ONE BEDROOM FIRST FLOOR FLAT LOCATED IN THE HEART OF ROMFORD**
- **LESS THAN A 5 MINUTE WALK TO ROMFORD STATION**
- **GOOD-SIZED DOUBLE BEDROOM**
- **FITTED KITCHEN WITH APPLIANCES**
- **ON-STREET PERMIT PARKING**
- **AVAILABLE NOW**
-
-
-

ACCOMMODATION



Energy Efficiency Rating		Current	Potential
<i>Very energy efficient - lower running costs</i>			
(92-100)	A		
(81-91)	B		
(69-80)	C	80	81
(55-68)	D		
(39-54)	E		
(21-38)	F		
(1-20)	G		
<i>Not energy efficient - higher running costs</i>			
England, Scotland & Wales		EU Directive 2002/91/EC	

Environmental Impact (CO ₂) Rating		Current	Potential
<i>Very environmentally friendly - lower CO₂ emissions</i>			
(92-100)	A		
(81-91)	B		
(69-80)	C	78	78
(55-68)	D		
(39-54)	E		
(21-38)	F		
(1-20)	G		
<i>Not environmentally friendly - higher CO₂ emissions</i>			
England, Scotland & Wales		EU Directive 2002/91/EC	

DISCLAIMER: These particulars, whilst believed to be accurate are set out as a general outline only for guidance and do not constitute any part of an offer or contract. Intending purchasers should not rely on them as statements or representation of fact, but must satisfy themselves by inspection or otherwise as to their accuracy. We have not carried out a detailed survey nor tested the services, appliances and specific fittings. Room sizes should not be relied upon for carpets and furnishings. The measurements given are approximate. No person in this firm's employment has the authority to make or give any representation or warranty in respect of the property.