



Matthew James

St James House | St James Road | Surbiton | Surrey KT6 4QH

T: +44 (0) 20 8390 2266

E: enquiries@matthewjamesestateagents.co.uk

www.matthewjamesestateagents.co.uk



## Portsmouth Road, Surbiton, KT6 4HR

A excellent large studio apartment with a separate sleeping area, set on the garden floor of a grand Victorian house. Located within a short walk of Surbiton mainline station and the High Street. With the Thames a 'stones throw' away. The many benefits include a generous size living space with sitting and dining space. A modern fitted kitchen with a built in oven, hob and hood. A good size sleeping area, there is also a welcoming entrance hall with a large storage cupboard. A modern white shower room with large walk in shower. Double glazing and electric heating. Well maintained communal areas. A walled communal garden to the rear with a bike store. Sold with no onward chain.

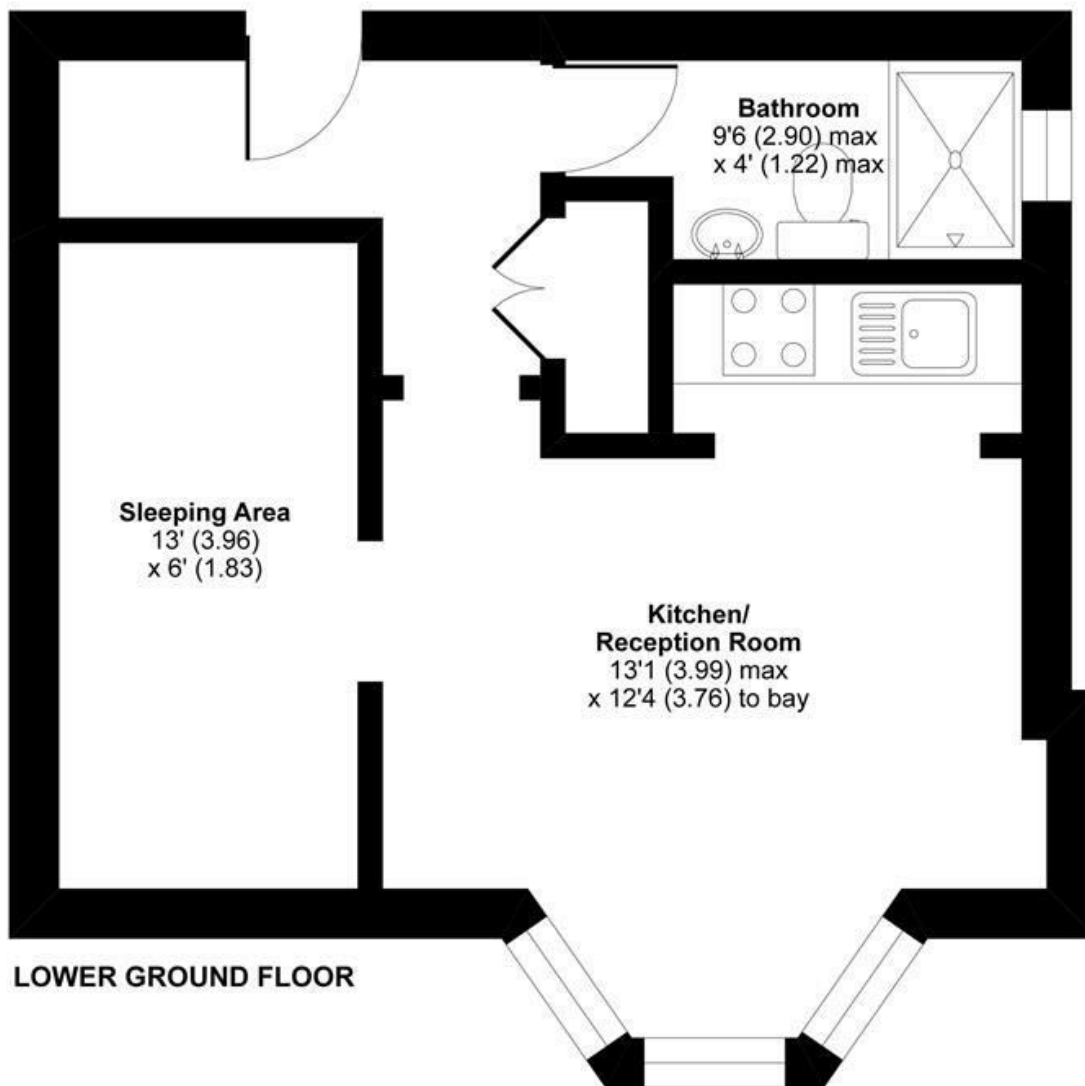
**Guide Price £220,000 Leasehold**

**EPC Rating: E**

Portsmouth Road, Surbiton, KT6

Approximate Area = 339 sq ft / 31.5 sq m

For identification only - Not to scale



Floor plan produced in accordance with RICS Property Measurement Standards incorporating International Property Measurement Standards (IPMS2 Residential). © nrichcom 2021. Produced for Matthew James. REF: 686062

These sales particulars have been prepared as a general guide only. We have not carried out a detailed survey, tested the services, appliances or specific fittings. Your solicitor must confirm lease or freehold details. Carpets, curtains, gas fires, electrical goods/fittings or other fixtures, unless expressly mentioned, are not included in the sale of this property. If there are any important matter which are likely to affect your decision to buy, please contact this office and we will be pleased to check the information for you before viewing the property. Before this property can be removed from the market, all offer.; must be checked by our Financial Services Department. This is a service we offer on behalf of our clients. Please note that our room sizes are quoted in metres to the nearest tenth of a meter on a wall-to-wall basis. The imperial equivalent is only intended as an approximate guide for those not fully conversant with the metric measurements. All measurements have been taken using a sonic tape measure and therefore may be subject to a small margin of error.

Energy Efficiency Rating		Current	Potential
Very energy efficient - lower running costs			
(92 plus) <b>A</b>			
(81-91) <b>B</b>			
(69-80) <b>C</b>			
(55-68) <b>D</b>			
(39-54) <b>E</b>		47	47
(21-38) <b>F</b>			
(1-20) <b>G</b>			
Not energy efficient - higher running costs			
<b>England &amp; Wales</b>		EU Directive 2002/91/EC	

Environmental Impact (CO <sub>2</sub> ) Rating		Current	Potential
Very environmentally friendly - lower CO <sub>2</sub> emissions			
(92 plus) <b>A</b>			
(81-91) <b>B</b>			
(69-80) <b>C</b>			
(55-68) <b>D</b>			
(39-54) <b>E</b>			
(21-38) <b>F</b>			
(1-20) <b>G</b>			
Not environmentally friendly - higher CO <sub>2</sub> emissions			
<b>England &amp; Wales</b>		EU Directive 2002/91/EC	