



Bartholomew Court

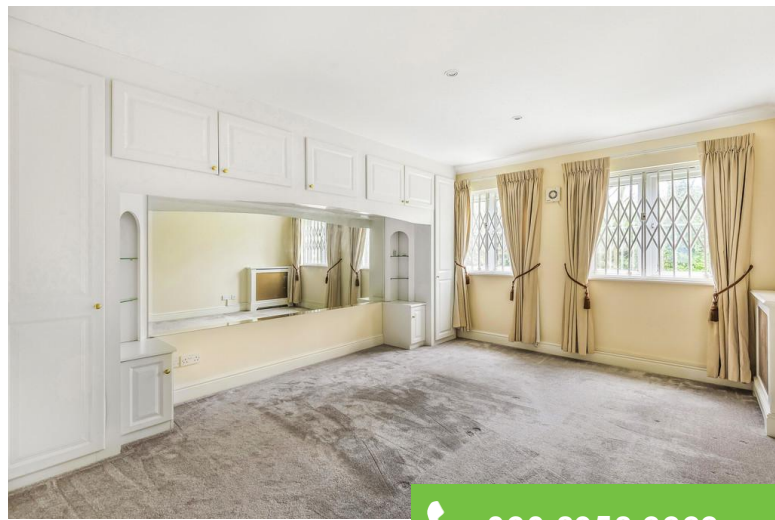
Longcrofte Road

Edgware

HA8 6QZ

Guide Price £525,000

Taylor Hawkins are proud to offer this 2 double bedroom, 2 bathroom, ground floor apartment. benefits family bathroom, en-suite bathroom, kitchen, allocated parking space and plenty of visitor parking. The property is conveniently located within minutes' walking distance of Canons Park's shops and Jubilee line station, as well as transport facilities to both Stanmore and Edgware.

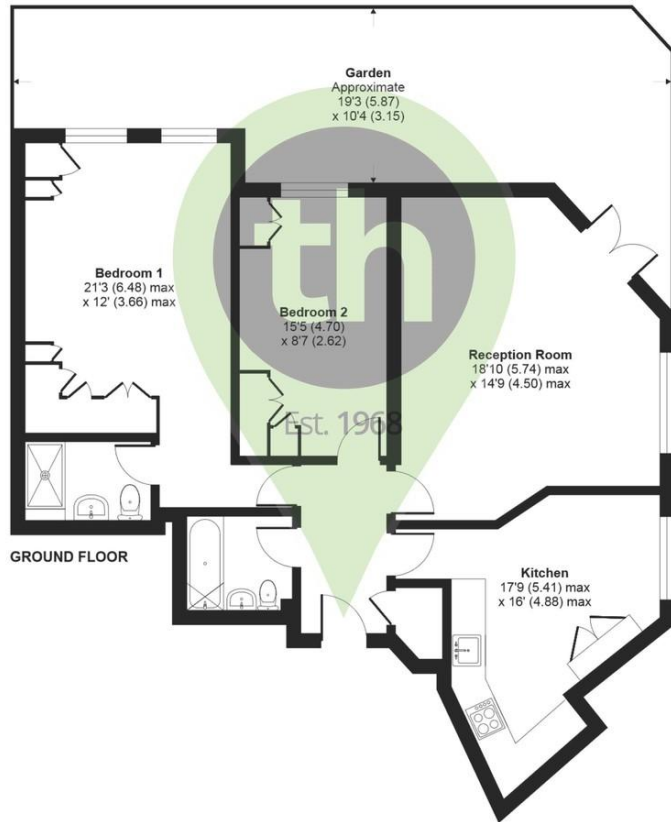


 020 8958 2222

Longcrofte Road, Edgware, HA8

Approximate Area = 944 sq ft / 87.7 sq m

For identification only - Not to scale



Certified
Property
Measurer

Floor plan produced in accordance with RICS Property Measurement Standards incorporating International Property Measurement Standards (IPMS2 Residential). ©richecom 2021. Produced for Taylor Hawkins. REF: 688461

58 Edgware Way
Edgware
Middlesex
HA8 8DJ

www.taylorhawkins.net
property@taylorhawkins.co.uk
020 8958 2222

Agents Note: Whilst every care has been taken to prepare these sales particulars, they are for guidance purposes only. All measurements are approximate are for general guidance purposes only and whilst every care has been taken to ensure their accuracy, they should not be relied upon and potential buyers are advised to recheck the measurements

Score	Energy rating	Current	Potential
92+	A		
81-91	B		
69-80	C	77 c	79 c
55-68	D		
39-54	E		
21-38	F		
1-20	G		