



### Farmdale Road (bedroom 3)

£655 pcm

Opportunity to pick up the newly modernised attractive 3 double bedroom Victorian Terraced House with a double reception, kitchen extension and bathroom with rear garden situated on Farmdale Road, Greenwich . 4 minute walk across the pedestrian bridge to Westcombe Park Station offering 15 minute commutes into Cannon Street and London Bridge. 24 Hour ASDA and Sainsburys with a 10 minute walk. What are you waiting for?

- Double Bed bedroom w/Garden
- Short Walk to Westcombe Park Train Station
- Close to all amenities and schools
- Furnished



## Property Description

The area in which this property is situated is East Greenwich bordering on Charlton. As a result, the access to the Bugsby Way Strip Shopping Mall is unparalleled with ASDA and Sainsbury 24 hour supermarkets close by. In terms of transportation links, the house is a short walk across the footbridge to Westcombe Park Rail Station with easy links into London Bridge and Charing Cross.

In addition, regular buses on nearby Woolwich Road whisk commuters into North Greenwich Underground Station with a one-stop option to Canary Wharf.

Farmdale Road is a largely residential road of Victorian Terraced Houses.

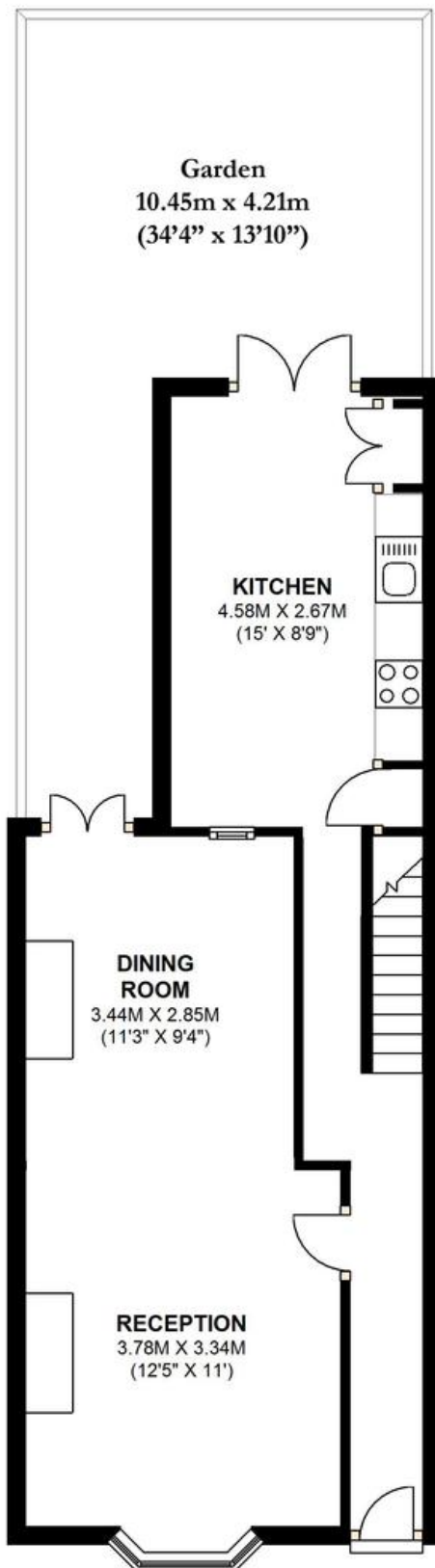
The property subject of these particulars is a mid-terraced, three bedroom, two reception house recently refurbished with a rear decked patio and garden. The property consists of a Dining Room open planned to the Reception on the ground floor as well as a modern kitchen extension while the floor above has three double bedrooms (one used as a study with a sofa bed) and a bathroom.

Due to the high quality of finish, the property is perfect for a small family or professional couple. Windows are double glazed and therefore well soundproofed. The property even comes with two flat screen TVs so the sooner you the view, the sooner it is yours!!



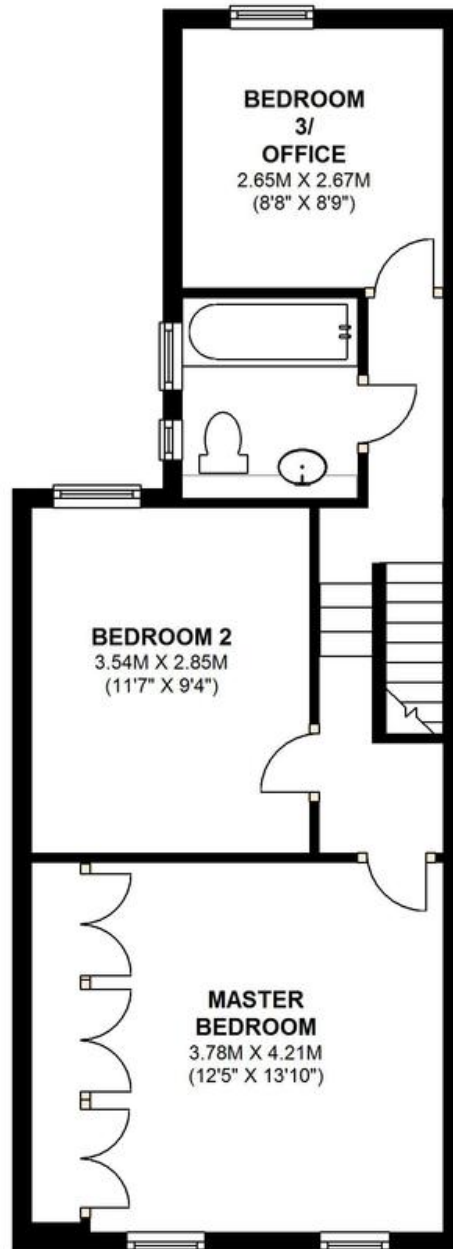
## GROUND FLOOR

APPROX. 42.2 SQ. METRES (454.4 SQ. FEET)



## FIRST FLOOR

APPROX. 42.8 SQ. METRES (460.7 SQ. FEET)



TOTAL AREA: APPROX. 85.0 SQ. METRES (915.1 SQ. FEET)

Farmdale Road

**655 Commercial Road, London, E14 7LW**

**Disclaimer**  
River Habitat, their clients and any joint agents give notice that: 1. They have no authority to make or give any representations or warranties in relation to the property. These particulars do not form any part of an offer or contract and must not be relied upon as statements or representations of fact. 2. Any areas, measurements or distances are approximate. The text, photographs and plans are for guidance only and are not necessarily a complete representation of the property. Photographs are taken using a wide angle lens camera. 3. It should not be assumed that the property has all necessary planning, building regulations or other consents and River Habitat have not tested any services, equipment or other facilities. Purchasers must satisfy themselves by inspection or otherwise