



Backed by
HM Government

BEECHWOOD APARTMENTS

GLOUCESTER PLACE

Cape

HOMES LIMITED



Beechwood Apartments, Gloucester Place, Cheltenham GL52 2RF
NINE CONTEMPORARY 1 & 2 BEDROOM APARTMENTS
WITHIN WALKING DISTANCE OF THE TOWN CENTRE

Cheltenham was specifically designed in its 18th and 19th century heyday as a pleasure health resort for wealthy visitors, the legacy of which is an exceptional range of quality accommodation, restaurants and entertainment in an elegant Regency spa town.

Conveniently less than a hundred miles from London, Cheltenham provides easy access from all parts of the UK and is an ideal base for touring into the Cotswolds, Stratford Upon Avon and Bath. Regency town houses with intricate ironwork balconies and painted stucco facades line the historic leafy Promenade squares and terraces.

Beechwood apartments can be found just a short stroll from the town centre and has been built to provide a mix of 1 & 2 bedroom contemporary apartments.



BEECHWOOD APARTMENTS

SPECIFICATION

KITCHEN

- Individually designed contemporary kitchens
- Integrated fridge/freezer
- Integrated oven
- Integrated washer/drier

BATHROOMS & EN-SUITES

- Contemporary Porcelanosa ceramics
- Thermostatic shower valves
- Electric heated chrome towel rails
- Ceramic tiled walls and floors

HEATING, LIGHTING & INTERNAL FINISHES

- LED down lights to kitchens, bathrooms, en-suites & hallway
- High efficiency electric heating
- Solid timber internal doors with high quality ironmongery
- Integrated wardrobes in all bedrooms
- USB Charge points in the kitchen & bedrooms
- Carpeted in the bedrooms
- Karndean floor tiles in the living/kitchen and entrance hallway

SECURITY

- Video secure door entry system
- High security locking system to main entrance door

MEDIA & COMMUNICATIONS

- Telephone/data points to kitchen/living/dining rooms, hallway & master bedroom
- Satellite TV - pre-wired ready to receive a decoder device

EXTERNALS

- Floor to ceiling windows
- Secure bicycle storage area
- Bin store area

APARTMENT 1

Ground Floor, 1 Bedroom,
1 Bathroom, 475 Sq FT

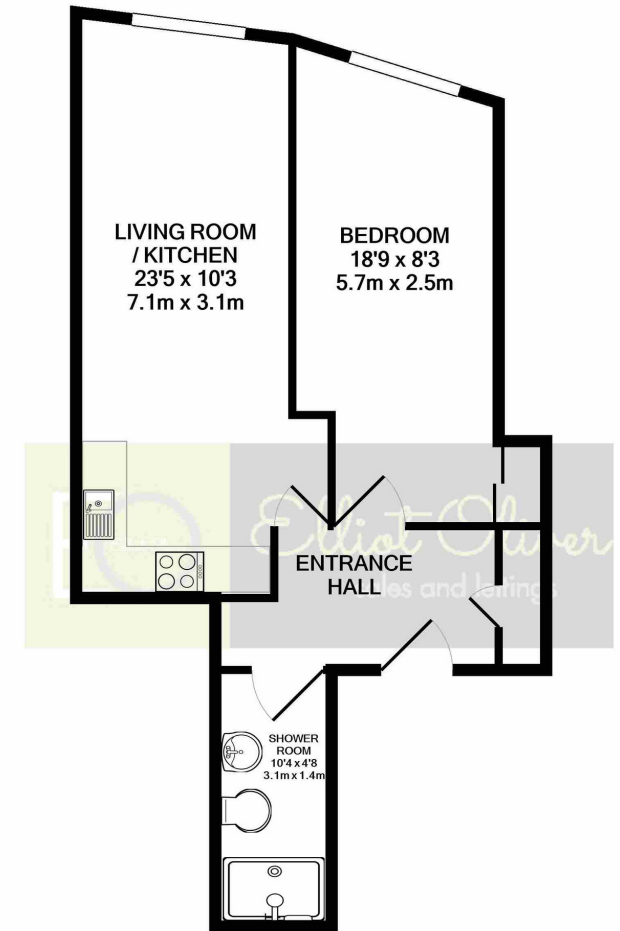


TOTAL APPROX. FLOOR AREA 475 SQ.FT. (44.1 SQ.M.)

Whilst every attempt has been made to ensure the accuracy of the floor plan contained here, measurements of doors, windows, rooms and any other items are approximate and no responsibility is taken for any error, omission, or mis-statement. This plan is for illustrative purposes only and should be used as such by any prospective purchaser. The services, systems and appliances shown have not been tested and no guarantee as to their operability or efficiency can be given
Made with Metropix ©2020

APARTMENT 2

Ground Floor, 1 Bedroom,
1 Bathroom, 472 Sq FT

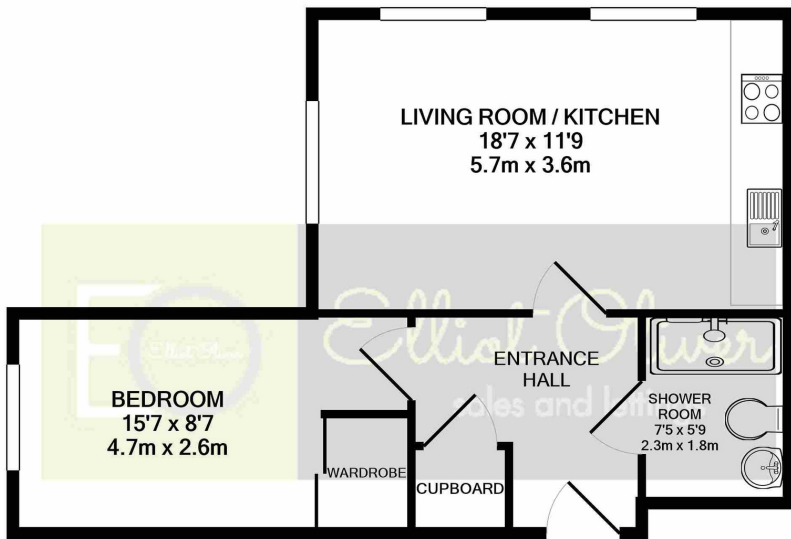


TOTAL APPROX. FLOOR AREA 472 SQ.FT. (43.9 SQ.M.)

Whilst every attempt has been made to ensure the accuracy of the floor plan contained here, measurements of doors, windows, rooms and any other items are approximate and no responsibility is taken for any error, omission, or mis-statement. This plan is for illustrative purposes only and should be used as such by any prospective purchaser. The services, systems and appliances shown have not been tested and no guarantee as to their operability or efficiency can be given
Made with Metropix ©2020

APARTMENT 3

Ground Floor, 1 Bedroom,
1 Bathroom, 471 Sq FT

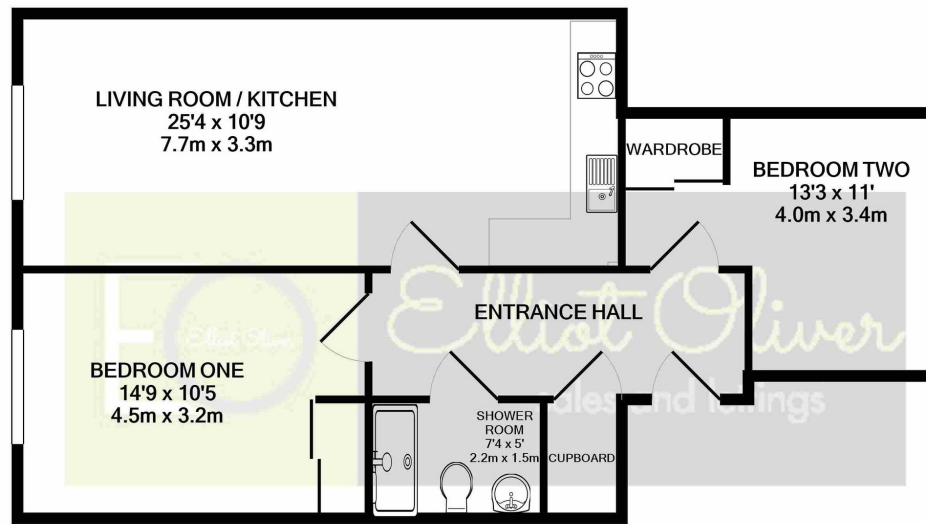


TOTAL APPROX. FLOOR AREA 471 SQ.FT. (43.8 SQ.M.)

Whilst every attempt has been made to ensure the accuracy of the floor plan contained here, measurements of doors, windows, rooms and any other items are approximate and no responsibility is taken for any error, omission, or mis-statement. This plan is for illustrative purposes only and should be used as such by any prospective purchaser. The services, systems and appliances shown have not been tested and no guarantee as to their operability or efficiency can be given
Made with Metropix ©2020

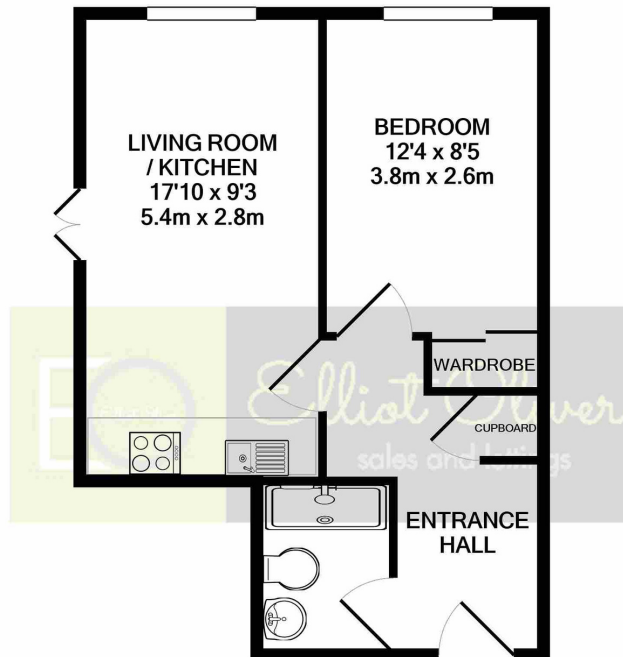
APARTMENT 4

First Floor, 2 Bedrooms,
1 Bathroom, 688 Sq FT



APARTMENT 5

First Floor, 1 Bedroom,
1 Bathroom, 386 Sq FT



TOTAL APPROX. FLOOR AREA 386 SQ.FT. (35.9 SQ.M.)

Whilst every attempt has been made to ensure the accuracy of the floor plan contained here, measurements of doors, windows, rooms and any other items are approximate and no responsibility is taken for any error, omission, or mis-statement. This plan is for illustrative purposes only and should be used as such by any prospective purchaser. The services, systems and appliances shown have not been tested and no guarantee as to their operability or efficiency can be given

Made with Metropix ©2020

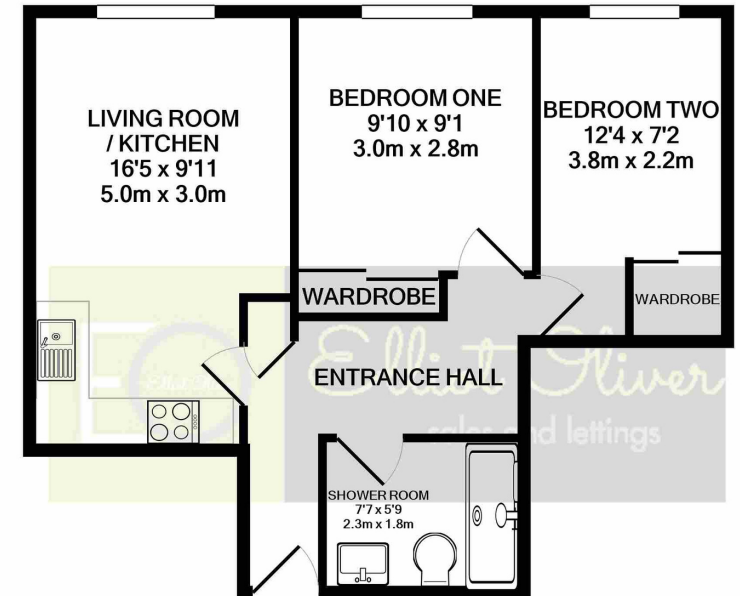
TOTAL APPROX. FLOOR AREA 688 SQ.FT. (63.9 SQ.M.)

Whilst every attempt has been made to ensure the accuracy of the floor plan contained here, measurements of doors, windows, rooms and any other items are approximate and no responsibility is taken for any error, omission, or mis-statement. This plan is for illustrative purposes only and should be used as such by any prospective purchaser. The services, systems and appliances shown have not been tested and no guarantee as to their operability or efficiency can be given

Made with Metropix ©2020

APARTMENT 6

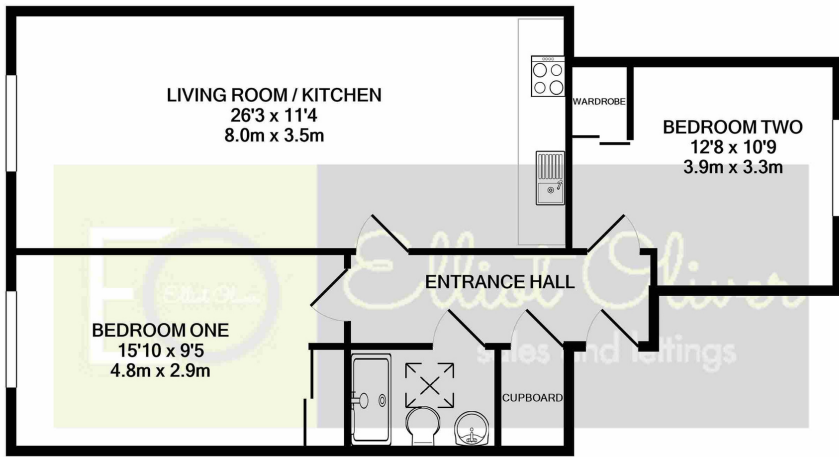
First Floor, 2 Bedrooms,
1 Bathroom, 453 Sq FT



TOTAL APPROX. FLOOR AREA 453 SQ.FT. (42.1 SQ.M.)

Whilst every attempt has been made to ensure the accuracy of the floor plan contained here, measurements of doors, windows, rooms and any other items are approximate and no responsibility is taken for any error, omission, or mis-statement. This plan is for illustrative purposes only and should be used as such by any prospective purchaser. The services, systems and appliances shown have not been tested and no guarantee as to their operability or efficiency can be given

Made with Metropix ©2020

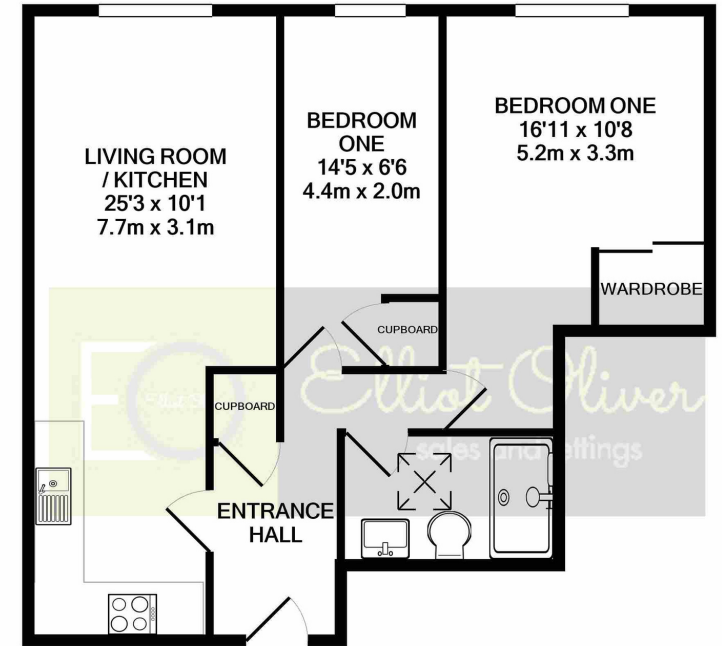


APARTMENT 7
Second Floor, 2 Bedrooms,
1 Bathroom, 691 Sq FT

TOTAL APPROX. FLOOR AREA 691 SQ.FT. (64.2 SQ.M.)

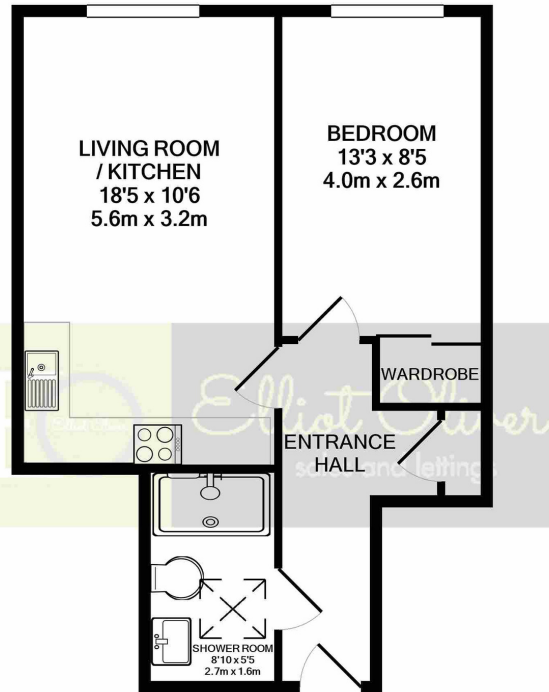
Whilst every attempt has been made to ensure the accuracy of the floor plan contained here, measurements of doors, windows, rooms and any other items are approximate and no responsibility is taken for any error, omission, or mis-statement. This plan is for illustrative purposes only and should be used as such by any prospective purchaser. The services, systems and appliances shown have not been tested and no guarantee as to their operability or efficiency can be given
Made with Metropix ©2020

APARTMENT 8
Second Floor, 2 Bedrooms,
1 Bathroom, 587 Sq FT



TOTAL APPROX. FLOOR AREA 587 SQ.FT. (54.5 SQ.M.)

Whilst every attempt has been made to ensure the accuracy of the floor plan contained here, measurements of doors, windows, rooms and any other items are approximate and no responsibility is taken for any error, omission, or mis-statement. This plan is for illustrative purposes only and should be used as such by any prospective purchaser. The services, systems and appliances shown have not been tested and no guarantee as to their operability or efficiency can be given
Made with Metropix ©2020



APARTMENT 9
Second Floor, 1 Bedroom,
1 Bathroom, 436 Sq FT

TOTAL APPROX. FLOOR AREA 436 SQ.FT. (40.5 SQ.M.)

Whilst every attempt has been made to ensure the accuracy of the floor plan contained here, measurements of doors, windows, rooms and any other items are approximate and no responsibility is taken for any error, omission, or mis-statement. This plan is for illustrative purposes only and should be used as such by any prospective purchaser. The services, systems and appliances shown have not been tested and no guarantee as to their operability or efficiency can be given
Made with Metropix ©2020



Agents note: Whilst every care has been taken to prepare these sales particulars, they are for guidance purposes only. All measurements are approximate and for general guidance purposes only, whilst every care has been taken to ensure their accuracy, they should not be relied upon & potential buyers are advised to recheck all measurements

BEECHWOOD APARTMENTS

GLOUCESTER PLACE

Cape
HOMES LIMITED

**A SHORT WALK
TO THE TOWN CENTRE**
**SUPERIOR SPECIFICATION
THROUGHOUT**

**LUXURY
APARTMENTS**
**CONTEMPORARY OPEN
PLAN LIVING**

101 Promenade,
Cheltenham,
Gloucestershire,
GL50 1NW
info@elliotoiver.co.uk

