



Whilst every attempt has been made to ensure the accuracy of the floorplan contained here, measurements of doors, windows, rooms and any other items are approximate and no responsibility is taken for any error, omission or mis-statement. This plan is for illustrative purposes only and should be used as such by any prospective purchaser. The services, systems and appliances shown have not been tested and no guarantee as to their operability or efficiency can be given.
 Made with Metrepx ©2019



8 Finsbury Terrace

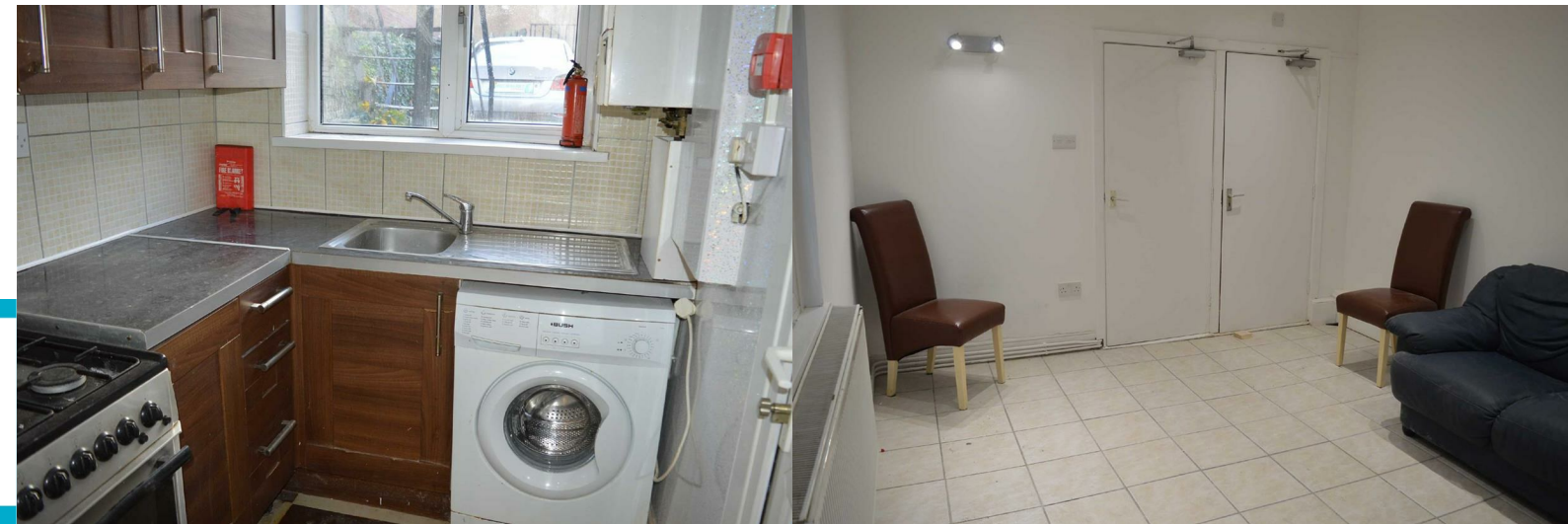
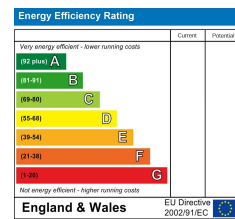
Brynmill, Swansea, SA2 0AH

Asking Price £275,000



These particulars, whilst believed to be accurate are set out as a general outline only for guidance and do not constitute any part of an offer or contract. Intending purchasers should not rely on them as statements or representations of fact, but must satisfy themselves by inspection or otherwise as to their accuracy. No person in this firm's employment has the authority to make or give any representation or warranty in respect of the property.

EPC



GENERAL INFORMATION

SPLIT INTO THREE SELF CONTAINED FLATS AND ONE STUDIO FLAT. Mid terrace property set over three floors. To the ground floor there are two double bedrooms, lounge/dining room, kitchen and shower room. On the first floor there is a studio flat that has recently been refurbished with lounge/bedroom, kitchen and shower room, Flat two comprises of lounge/dining room, one bedroom, kitchen and shower room. On the second floor flat there can be found a one bed and has recently been refurbished comprising of open plan lounge/dining room and kitchen. The property also benefits from uPVC double glazing, gas central heating and off road parking to the rear. Situated close to Swansea University and local amenities. Ideal Investment buy. No chain. F1-D F2-E F3-C F4-D.



FULL DESCRIPTION

ENTRANCE

Enter via wooden door into:

COMMUNAL HALLWAY

Stairs to first floor, tiled flooring.

FLAT 1

BEDROOM 1

4.67 x 3.75 (15'4" x 12'4")

UPVC double glazed window to front, tiled fire surround with gas inset fire, coved ceiling, radiator.

BEDROOM 2

3.55 x 3.02 (11'8" x 9'11")

UPVC double glazed window to rear, laminate flooring, alcoves storage, radiator.

HALLWAY

Tiled floor.

LOUNGE

3.68 x 3.41 (12'1" x 11'2")

UPVC double glazed window to side, radiator.

KITCHEN

1.92 x 1.76 (6'4" x 5'9")

Fitted with a range of wall and base units with work surface over, stainless steel sink and drainer with mixer tap, wall mounted gas central heating boiler, space for washing machine and cooker, uPVC double glazed window to rear, uPVC external door to side.

SHOWER ROOM

Three piece suite comprising shower cubicle, low level

w.c, pedestal wash hand basin, part tiled walls, extractor fan, uPVC double glazed window to rear.

FIRST FLOOR

LANDING

Stairs to second floor.

FLAT 2 - STUDIO

LOUNGE/BEDROOM

3.42 x 2.60 (11'3" x 8'6")

UPVC double glazed window to side.

SHOWER ROOM.

Three piece suite comprising shower cubicle, low level w.c, pedestal wash hand basin, fully tiled walls, spot lighting, uPVC double glazed window to side.

KITCHEN/BREAKFAST ROOM

3.62 x 2.25 (11'11" x 7'5")

Fitted with base units with work surface over, stainless steel sink and drainer with mixer tap, built in oven and hob, part tiled walls, spot lighting, laminate flooring, uPVC double glazed door to rear leading to fire exit.

FLAT 3

BEDROOM

3.59 x 2.26 (11'9" x 7'5")

UPVC double glazed window to front, radiator.

LOUNGE

3.65 x 2.92 (12'0" x 9'7")

UPVC double glazed window to front, tiled fire surround with gas inset fire, radiator.

KITCHEN

3.55 x 1.56 (11'8" x 5'1")

Fitted with a range of wall and base units with work surface over, stainless steel sink and drainer with mixer tap, wall mounted combination boiler, space for cooker and washing machine, tiled floor, part tiled walls, uPVC double glazed window to rear.

SHOWER ROOM..

Three piece suite comprising shower cubicle, low level w.c, wall mounted wash hand basin, part tiled walls, tiled floor, extractor fan.

SECOND FLOOR

FLAT 4

HALLWAY.

LOUNGE/DINING ROOM OPEN PLAN KITCHEN

5.27 x 3.87 (17'3" x 12'8")

Fitted with modern base units with work surface over, wall mounted combination boiler, radiator, uPVC double glazed window to front.

BEDROOM

3.58 x 2.16 (11'9" x 7'1")

UPVC double glazed window to rear, laminate flooring, radiator.

SHOWER ROOM...

Two piece suite comprising shower cubicle, pedestal wash hand basin, tiled walls, tiled floor.

W.C

Low level w.c, wall mounted wash hand basin, splash back tiles, tiled floor, velux window.

HALLWAY..

Laminate flooring, loft access.

EXTERNAL

FRONT

Forecourt garden.

REAR

Enclosed parking area.

Tenure

Freehold

