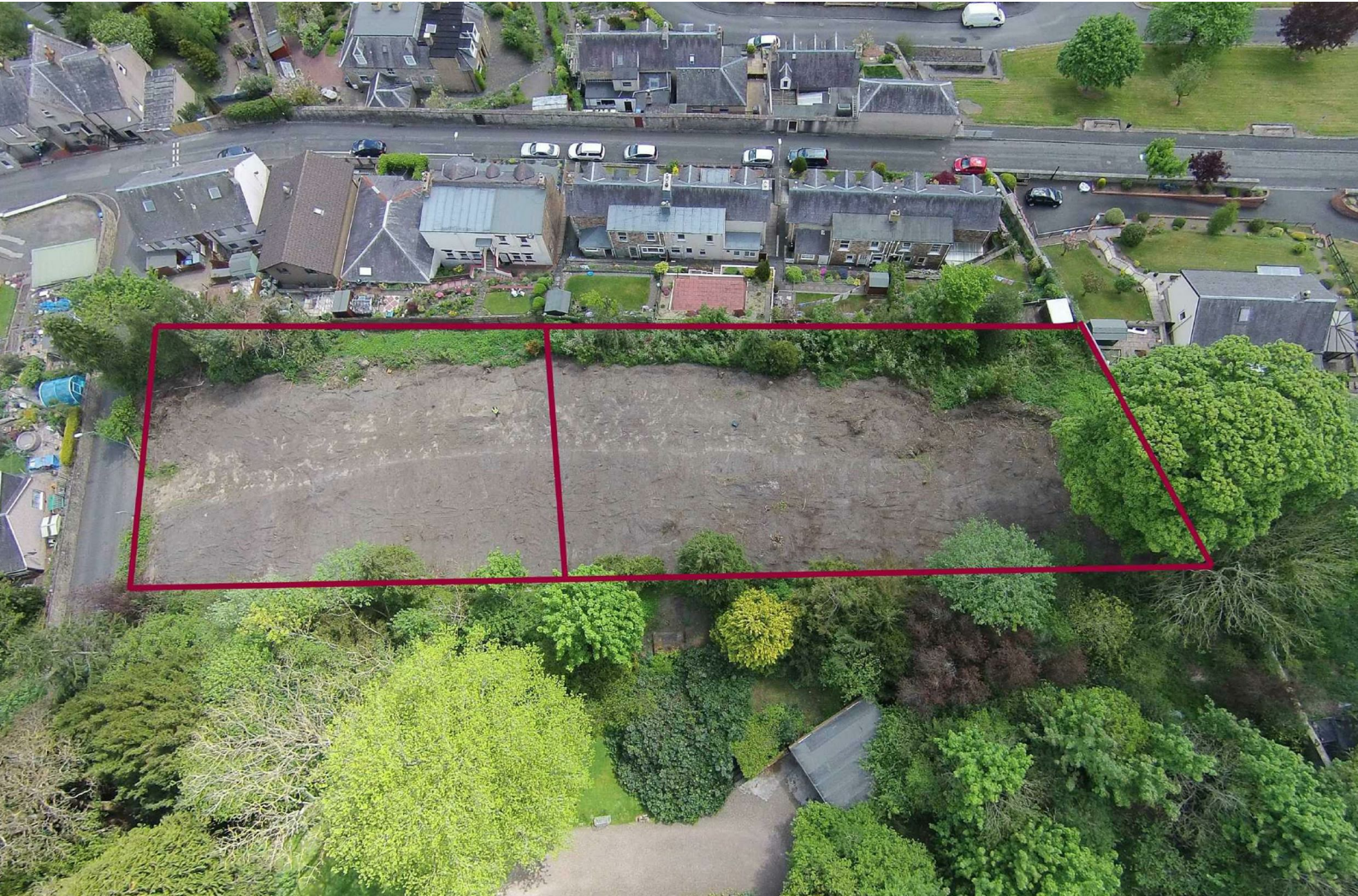




# BANNERMANBURKE

PROPERTIES LIMITED



## Rosalee Brae, Hawick, TD9 7HH

A unique opportunity to purchase one or two building plots which have had outline planning consent for one and a half storey dwelling houses. Set in a former walled garden the plots have open views over the town and surrounding countryside. Located in an established residential area of the town, they combine being only 5 minutes walk from all amenities yet only 2 minutes from open countryside. The plots extend to 0.35 acres approx each. All services are close to hand being on Rosalee Brae. The plots benefits from being south-facing and there is no through traffic on Rosalee Brae. Part exchange is considered for one or both plots.

- Outline Planning (now lapsed) ▪ Stunning Views ▪ Part Exchange Considered ▪ Services Readily Available ▪ Plot 1 - £80,000 ▪ Plot 2 - £90,000

**OFFERS IN THE REGION OF £90,000**



## Services

Mains drainage, water, gas and electricity are all available adjacent to the plots on Rosalee Brae.

## Planing information

All information regarding planning applications can be viewed at <http://eplanning.scotborders.gov.uk/> Quoting Reference numbers 08/00558/OUT and 11/00721/AMC



### Important:

You may download, store and use the material for your own personal use and research. You may not republish, re transmit, redistribute or otherwise make the material available to any party or make the same available on any website, online service or bulletin board of your own or of any other party or make the same available in hard copy or in any other media without the website owner's express prior written consent. Bannerman Burke Properties Ltd copyright must remain on all reproductions of material taken from this website.