



Addison Road, Worcester, WR3 8EA | £190,000
Top Floor Apartment

Features:

- Top Floor Apartment
- Open Plan Kitchen/Diner/Living Area
- Two Double Bedrooms
- En-Suite and Additional Bathroom
- Allocated Parking Space
- North Worcester Location

Summary:

This spacious and beautifully presented apartment has a wonderful feel to it and has an extended lease of 998 years approx. Close to all local amenities and comes with good storage and two allocated parking spaces. Virtual Tour Available.

Description:

The property in brief comprises; entrance, stairs to apartment which is on the top floor. Private storage cupboard next to front door. Spacious entrance hall with two storage cupboards. Open plan lounge, kitchen, and dining area with lots of windows bringing in a lot of natural light. The kitchen has built in appliances which include fridge freezer, cooker and microwave. Two double bedrooms both with built in wardrobes and master with en suite shower. Separate main bathroom. The property benefits from gas central heating, double glazing and two parking spaces allocated with the apartment number.

Outside:

Two parking spaces to the front of the building.

Location:

Addison Road is situated in North Worcester and has a local post office, dentist, doctor's surgery, and many other local amenities. There are several bus stops to take you into the town centre. There are local primary schools within walking distance and high schools. The property is located towards Jct 6 of the M5 Motorway.



Rooms:

Hall:

Kitchen/Diner/Lounge:

Master Bedroom:

En Suite:

Bedroom Two:

Bathroom:



EPC: C

Council Tax Band: C

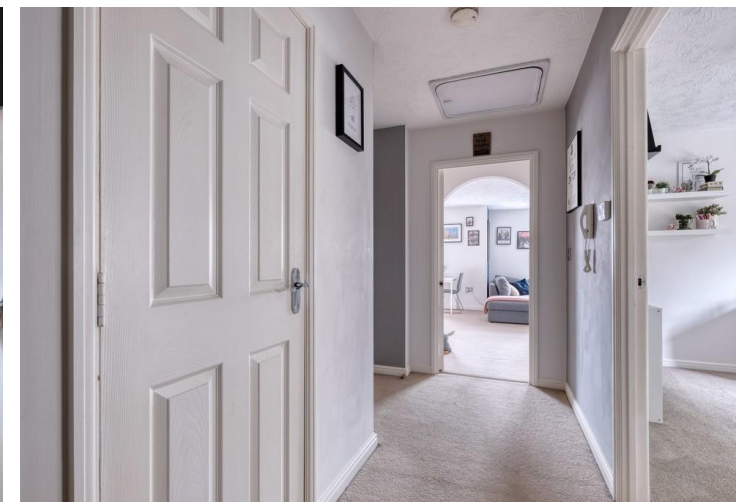
Tenure: Leasehold

Lease Length: 998 yrs aprox

Service Charge: £1114 pa aprox

Ground Rent: N/A

For more information on Addison Road or to arrange a viewing, please call the Worcester Office on 01905 958290



Please read the following: These particulars are for general guidance only and are based on information supplied and approved by the seller. Complete accuracy cannot be guaranteed and may be subject to errors and/or omissions. They do not constitute a contract or part of a contract in any way. We are not surveyors or conveyancing experts therefore we cannot and do not comment on the condition, issues relating to title or other legal issues that may affect this property. Interested parties should employ their own professionals to make enquiries before carrying out any transactional decisions. Photographs are provided for illustrative purposes only and the items shown in these are not necessarily included in the sale, unless specifically stated. The mention of any fixtures, fittings and/or appliances does not imply that they are in full efficient working order and they have not been tested. All dimensions are approximate. We are not liable for any loss arising from the use of these details.