



**Brunswick Square, Gloucester GL1 1UN**

**Prices From £149,995**



## Brunswick Square, Gloucester GL1 1UN

- No onward chain
- Last remaining two top floor apartments within this period development
- Two bedroom with inbuilt wardrobe
- Luxury bathroom fittings throughout
- Open plan kitchen living space within integrated appliances

### Prices From £149,995

#### Accommodation

The final two top floor apartments left available within this well appointed period renovation set within the heart of the historic Brunswick Square Gardens. Both offer a modern single store living space with two bedrooms offering fitted wardrobes, luxury bathroom fittings alongside open plan kitchen living space with integrated appliances. Apartment one offers exceptionally spacious bathroom with both separate bath and 1200mm width shower cubicle with rainfall shower and wand, whilst apartment two offers surprisingly generous open plan living space with feature character brick wall.

#### Outside

Parking can be found to the rear of the property with additional council permit parking being located immediately outside the property. The central Georgian square, for residents only, provides a extensive and charming external space to enjoy the summer months with mature shrubs and well

appointed borders, in addition to a further small communal garden located to the rear of the building.

#### Location

Tucked away in the quiet location of Brunswick Square, the characterful Georgian townhouse overlooks the square gardens with residential permit parking surrounding. Approximately quarter of a mile from the City Centre Gloucester offers various amenities, shopping and transport facilities throughout whilst The Gloucester Quays development offers a range of restaurants, cinema and bars only half a mile.

#### Local Authority, Service & Tenure

Gloucester City Council - Tax Band A  
Mains water, drainage, electric and gas.  
Leasehold - Estimated charge of circa £1000 to £1200 per year to include ground rent and service charge, management company and finalised lease length to be confirmed.

\* Details correct as of 01/02/21 \*



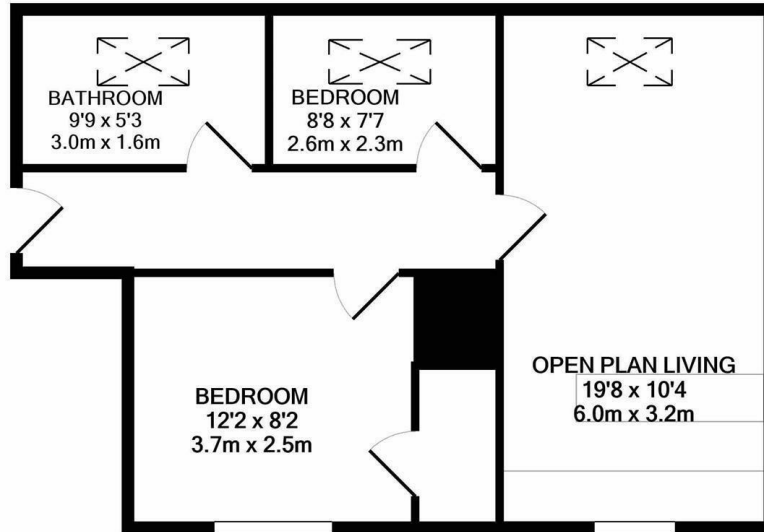
Unit C Barge Arm East, Gloucester Docks, GL1 2DQ

01452 398010

docks@naylorpowell.com

www.naylorpowell.com





Whilst every attempt has been made to ensure the accuracy of the floor plan contained here, measurements of doors, windows, rooms and any other items are approximate and no responsibility is taken for any error, omission, or mis-statement. This plan is for illustrative purposes only and should be used as such by any prospective purchaser. The services, systems and appliances shown have not been tested and no guarantee as to their operability or efficiency can be given  
Made with Metropix ©2020

Disclaimer: These particulars do not form part of any contract and no responsibility is accepted for any errors or omissions in any statement made, whether verbally or written for or on behalf of Naylor Powell.

Floorplans have been prepared for identification purposes only, they are not to scale and no guarantee can be given as to their accuracy.

Prospective purchasers please be aware none of the appliances, boiler, heaters etc. which may have been mentioned in these particulars have been tested and no guarantee can be given that they are in working order. Prospective purchasers should arrange for such items to be tested at their own expense.

