



2 Matthew Parker Street, London
SW1H

GARTONJONES.COM



2 Matthew Parker Street, London
, SW1H

GARTON JONES.COM

49 Marsham Street Lettings:
London +44 (0) 20 7340 0480
SW1P 3DP westminster@gartonjones.com
www.gartonjones.com

£575 Per Week

A bright and spacious top floor apartment available to let in this popular development in Westminster, close to Parliament Square and the River Thames. The property is offered furnished and is available for immediate occupation (located on the 7th floor with lift). Living accommodation comprises of a reception room with dining area, a separate integrated kitchen, 2 double bedrooms both with fitted wardrobes and the master benefitting from an en-suite bathroom, further guest bathroom and additional storage. Matthew Parker Street has the benefit of a 24 hour concierge and is well located for the transport links of St James's Park, Westminster and Victoria which are all within walking distance. There is an abundance of local amenities including a variety of retail stores, including House of Fraser Department store, the Cardinal Place Shopping Centre. A Little Waitrose, Curzon Cinema and many restaurants such as The Ivy Victoria, All Bar One, Roux at Parliament Square and many more are just short stroll away

- 835 sq.ft (77.6sq.m)
- 2 Bedroom Apartment
- 7th Floor (Lift)
- Reception Room
- Modern Integrated Kitchen
- 2 Bathrooms (En-Suite)
- Available Immediately
- 24 Hour Concierge
- Close to Local Amenities Including Shops, Restaurants & Transport Links
- Walking Distance Westminster, St James Park & Victoria Station




Matthew Parker Street

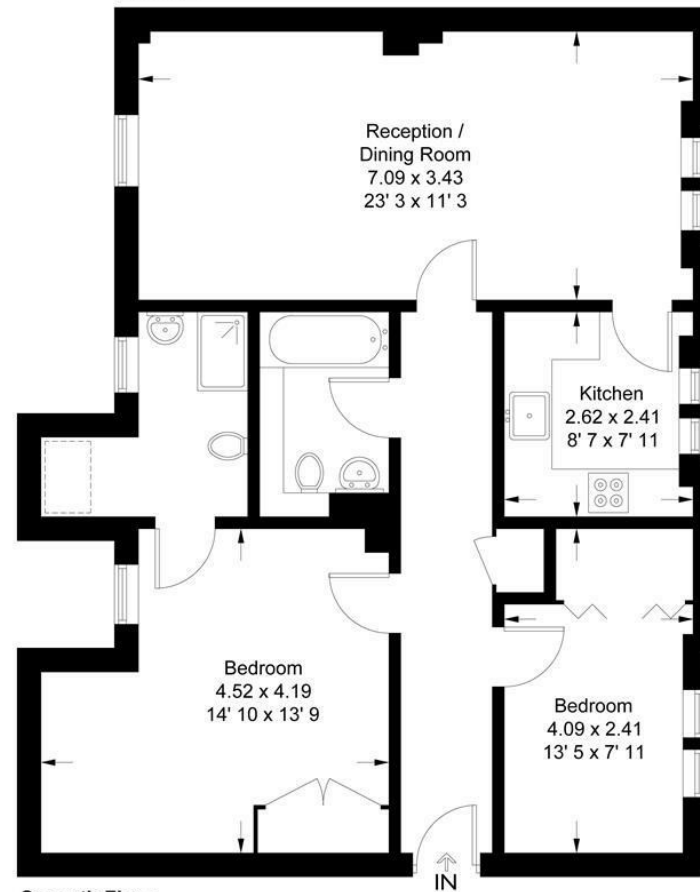
Approximate Gross Internal Area = 829 sq ft / 77 sq m
(Excluding Reduced Headroom)

Reduced Headroom = 6 sq ft / 0.6 sq m

Total = 835 sq ft / 77.6 sq m



 = Reduced headroom below 1.5m / 5'0



Seventh Floor

Not to scale, for guidance only and must not be relied upon as a statement of fact
All measurements and areas are approximate only and have been prepared in
accordance with the current edition of the RICS Code of Measuring Practice

