



Seymour Court, Winchmore Hill

£1,300 PCM



the advantage of experience



This larger than average 2 double bedroom flat within walking distance of Winchmore Hill Green

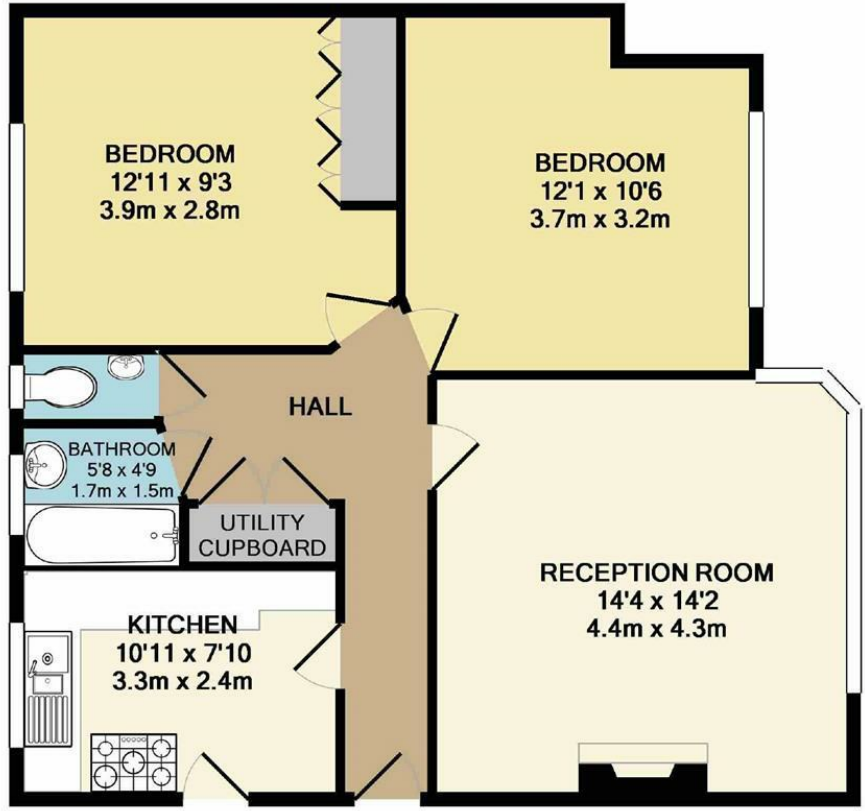
- 2 bedrooms
- Spacious lounge
- Entryphone
- Well manicured communal gardens
- Double glazing
- Transport links
- Close to Grovelands Park





We are delighted to offer this immaculately presented TOP floor 2 double bedroom purpose purpose built apartment situated within this popular development just 7 mins from Winchmore Hill mainline station (29 mins to Moorgate), Southgate tube (zone 4 Piccadilly line), bus routes & vast amenities. The property comprises of a spacious bright lounge, fitted kitchen, neutral decor throughout, modern bathroom & use of communal gardens. Only 0.2 miles from Eversley Primary school and close to Oakwood park. Available in March.

For more images of this property please visit havilands.co.uk



TOTAL APPROX. FLOOR AREA 698 SQ.FT. (64.9 SQ.M.)

Whilst every attempt has been made to ensure the accuracy of the floor plan contained here, measurements of doors, windows, rooms and any other items are approximate and no responsibility is taken for any error, omission, or mis-statement. This plan is for illustrative purposes only and should be used as such by any prospective purchaser. The services, systems and appliances shown have not been tested and no guarantee as to their operability or efficiency can be given
 Made with Metropix ©2018

havilands | 020 8886 6262
 come by and meet the team
 30 The Green, Winchmore Hill, London, N21 1AY



the advantage of experience