



## Shepherds Bush Road, Hammersmith, W6

**£323 Per Week**

\*\*\*\* Rent is inclusive of communal heating and water rates \*\*\*\*

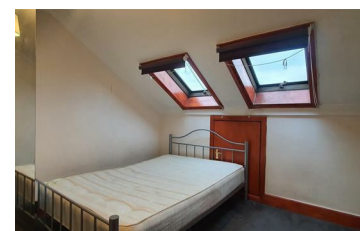
Excellent location two bedroom flat situated on Shepherds Bush Road, moments from Shepherd's Bush Green and Westfield Shopping Centre.

The flat offers two double bedrooms, open plan reception room, fitted kitchen and a fully tiled bathroom.

The property further benefits from ample storage and the rent including communal heating & water rates.

Transport links include Shepherd's Bush and Hammersmith stations (Piccadilly, District, Central and Hammersmith & City lines)

- Top floor flat
- Two double bedrooms
- Inclusive of communal heating and water rates
- Bright reception
- Tiled bathroom
- Moments from local amenities
- Open plan kitchen
- Ample storage space



Energy Efficiency Rating		Environmental Impact (CO <sub>2</sub> ) Rating	
Current	Potential	Current	Potential
<b>A</b>		<b>A</b>	
100 kWh/m <sup>2</sup> /year		100 g/m <sup>2</sup> /year	
90 kWh/m <sup>2</sup> /year		90 g/m <sup>2</sup> /year	
80 kWh/m <sup>2</sup> /year		80 g/m <sup>2</sup> /year	
70 kWh/m <sup>2</sup> /year		70 g/m <sup>2</sup> /year	
60 kWh/m <sup>2</sup> /year		60 g/m <sup>2</sup> /year	
50 kWh/m <sup>2</sup> /year		50 g/m <sup>2</sup> /year	
40 kWh/m <sup>2</sup> /year		40 g/m <sup>2</sup> /year	
30 kWh/m <sup>2</sup> /year		30 g/m <sup>2</sup> /year	
20 kWh/m <sup>2</sup> /year		20 g/m <sup>2</sup> /year	
15 kWh/m <sup>2</sup> /year		15 g/m <sup>2</sup> /year	
10 kWh/m <sup>2</sup> /year		10 g/m <sup>2</sup> /year	
5 kWh/m <sup>2</sup> /year		5 g/m <sup>2</sup> /year	
0 kWh/m <sup>2</sup> /year		0 g/m <sup>2</sup> /year	

England & Wales 2008/1/EC