



# Seymour Court, Eversley Park

Offers In Excess Of £400,000

**Havilands**

the advantage of experience



- Sought after location
- Two double bedrooms
- Allocated parking
- Share of freehold
- Entry phone system
- Walking distance to Winchmore Hill Green & Southgate
- Catchment for local schools
- Double glazing
- Feature fireplace
- Working fireplace

For more images of this property please visit [havilands.co.uk](http://havilands.co.uk)

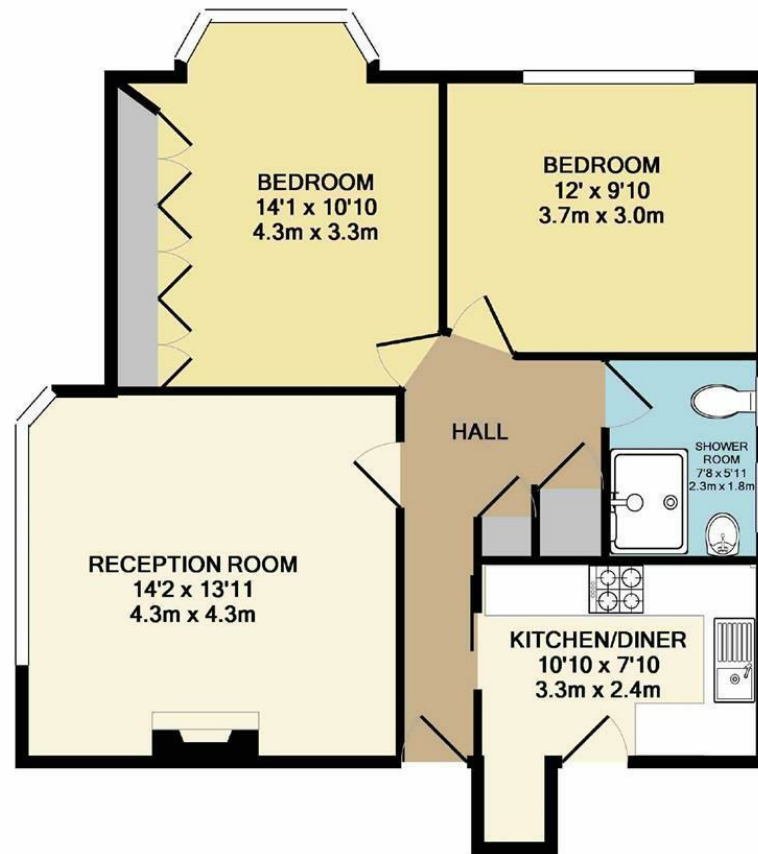


Havilands are delighted to offer this two double bedroom second floor apartment located in a popular Art Deco mansion block within easy reach of both Winchmore Hill and Southgate stations, catchment for local schools and walking distance to both Grovelands and Oakwood park.

Features include spacious kitchen with a modern design, two good sized double bedrooms and ample storage. Good sized shower room, functioning fire place, allocated parking, wood flooring, secure entry phone and well manicured communal gardens. The property further benefits from share of freehold.

Early viewing is advised, so please get in touch to arrange a viewing.

For more images of this property please visit [havilands.co.uk](http://havilands.co.uk)



TOTAL APPROX. FLOOR AREA 700 SQ.FT. (65.1 SQ.M.)

Whilst every attempt has been made to ensure the accuracy of the floor plan contained here, measurements of doors, windows, rooms and any other items are approximate and no responsibility is taken for any error, omission, or mis-statement. This plan is for illustrative purposes only and should be used as such by any prospective purchaser. The services, systems and appliances shown have not been tested and no guarantee as to their operability or efficiency can be given

Made with Metropix ©2017

havalands | 020 8886 6262

come by and meet the team

30 The Green, Winchmore Hill, London, N21 1AY



the advantage of experience