



Ansley Close, Matchborough East, Redditch, B98 0AX | £240,000
Three Bedroom Semi-Detached House

Features:

- Semi Detached House with Driveway and Detached Garage
- Three Bedrooms
- Lounge, Dining Room and Garden Room
- Modern Kitchen
- Contemporary Shower Room
- Private Aspect Rear Garden

Summary:

A very well presented three bedroom semi-detached house with driveway and detached single garage, offering stylish and modern internal accommodation and a private aspect rear garden, situated in Matchborough East, Redditch.

Description:

The accommodation briefly comprises:- Entrance porch, hallway with stairs rising to first floor, lounge with bay window to front, open plan dining room, garden room with door leading out, modern kitchen with door to rear garden and offering a range of wall and base units with integrated oven and gas hob with extractor hood over. To the first floor are the master bedroom with built-in store cupboard, double bedroom two, single bedroom three with store-cupboard and contemporary shower room with wash basin, WC and a double width walk in shower, all leading off a central landing.

Outside:

The property is accessed via driveway parking with lawned fore-garden and planted boundary and a detached single garage with up and over vehicular door to front and pedestrian door to garden.

The rear garden enjoys a private aspect, offering a good-sized lawn, patio and shrub border to fenced boundaries with side access gate.

Location:

Situated in Matchborough East, the nearby town centre of Redditch offers easy access to motorway links (M42, Jct 2&3) and there are good rail and bus links. There are also excellent leisure facilities and eateries, along with cultural attractions, and the Kingfisher Shopping Centre.



Room Dimensions:

Porch

Hall

Lounge:

12' 11" x 10' 7" (3.95m x 3.25m)

Dining Room:

10' 11" x 9' 5" (3.35m x 2.88m)

Garden Room:

9' 0" x 4' 11" (2.75m x 1.52m)

Kitchen:

10' 11" x 7' 3" (3.35m x 2.22m)

Garage:

16' 0" x 9' 6" (4.90m x 2.90m)

Stairs To First Floor Landing

Master Bedroom:

13' 1" x 10' 2" (4.00m x 3.12m)

Bedroom Two:

11' 3" x 9' 3" (3.45m x 2.82m) max

Bedroom Three:

9' 9" x 6' 5" (2.98m x 1.98m)

Bathroom:

7' 5" x 6' 2" (2.28m x 1.90m)

EPC: TBC

Council Tax Band: C

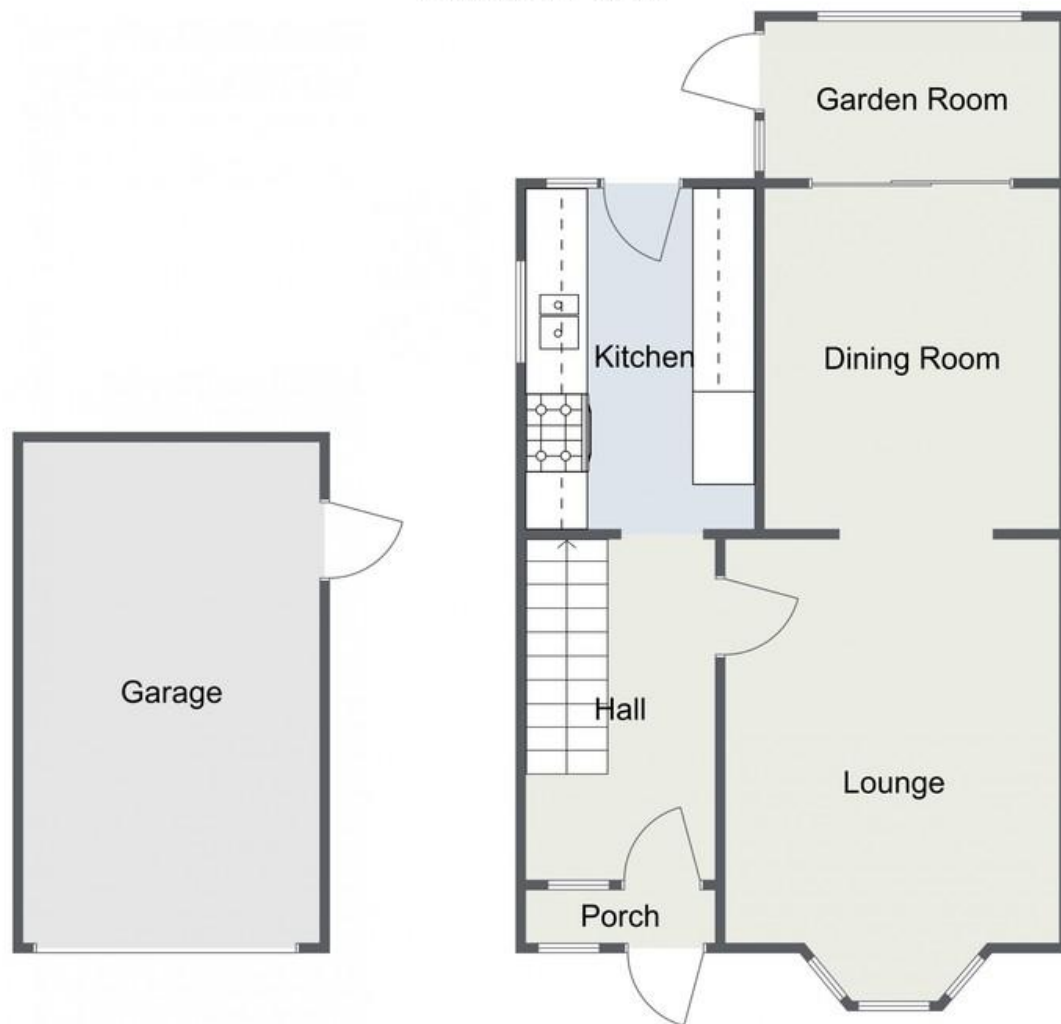
Tenure: Freehold

For more information on Ansley Close or to arrange a viewing, please call the Redditch Office on 01527 540 654

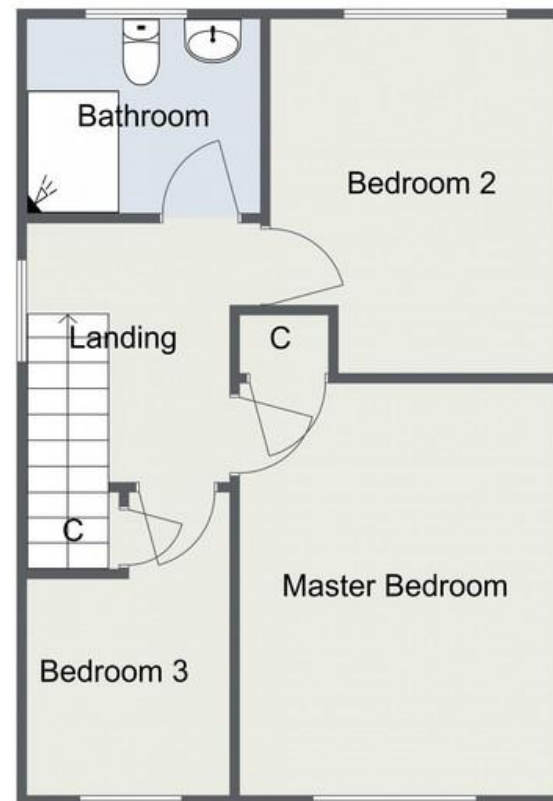


Ansley Close, Redditch

Ground Floor



First Floor



Total Area Approx(not inc garage)
83.5 sq metres (899 sq ft)

For illustrative purposes only. Decorative finishes, fixtures & fittings do not represent the current state of the property. Measurements are approximate & not to scale.
Floor Plans made using RoomSketcher.

Please read the following: These particulars are for general guidance only and are based on information supplied and approved by the seller. Complete accuracy cannot be guaranteed and may be subject to errors and/or omissions. They do not constitute a contract or part of a contract in any way. We are not surveyors or conveyancing experts therefore we cannot and do not comment on the condition, issues relating to title or other legal issues that may affect this property. Interested parties should employ their own professionals to make enquiries before carrying out any transactional decisions. Photographs are provided for illustrative purposes only and the items shown in these are not necessarily included in the sale, unless specifically stated. The mention of any fixtures, fittings and/or appliances does not imply that they are in full efficient working order and they have not been tested. All dimensions are approximate. We are not liable for any loss arising from the use of these details.