



C4, 11 GREENBANK GARDENS, GREENOCK,
PA16 8LE





Description

Set in the desirable Greenbank Gardens development within the West End this stunning immaculately presented two bedroom FIRST FLOOR FLAT was comprehensively upgraded in 2016. The upgrading included: luxury breakfasting kitchen and bathroom, plus installation of electric wet central heating and replacement double glazing.

There is essential off street private car parking with an allocated space to the rear of the building. Conveniently located for the town centre with all its amenities and Greenock West area with the railway station offering a frequent service to Glasgow. The building is protected by a security door entry system.

Excellent accommodation comprises: welcoming Hallway with two inbuilt cupboards and glazed panelling giving light from the lounge. The front facing spacious Lounge / Dining Room has a feature four light box bay window and 2nd front facing window forming an airy apartment perfect for relaxing and entertaining.

There is a luxury refitted Kitchen with front window, white high gloss units, high gloss granite style work surfaces and matching splashback. Appliances include: chimney extractor hood, electric ceramic hob, electric oven, integrated washing machine, fridge freezer and microwave.

There are two generous sized double Bedrooms, The 1st bedroom benefits from a bank of fitted mirrored wardrobes offering generous storage. There is a luxury Bathroom with side window featuring a quality three piece suite comprising: vanity wash hand basin set within high gloss unit, WC and shower bath with shower. Additional features include: curved shower screen, partial wet wall panelling and tiled flooring with underfloor heating.

Viewing is highly recommended for this impressive upgraded West End home. EPC =

Measurements

Hallway

Lounge / Dining Room

19'10 x 14'11 (6.05m x 4.55m)

Breakfasting Kitchen

11'10 x 7'9 (3.61m x 2.36m)

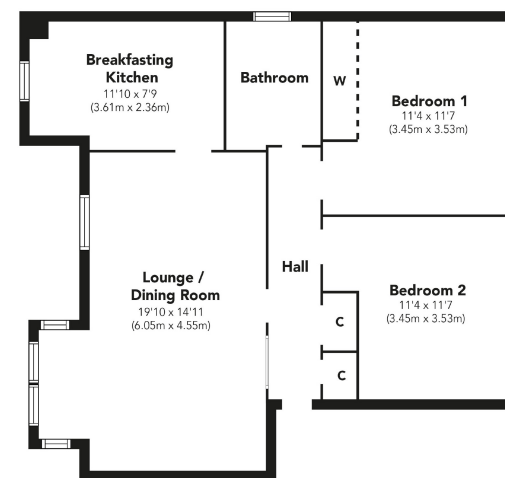
Bedroom 1

11'4 x 11'7 (3.45m x 3.53m)

Bedroom 2

11'4 x 11'7 (3.45m x 3.53m)

Bathroom



Floorplans are indicative only - not to scale
Produced by Plush Plans Ltd 











**The
next
step....**



To view call our office on
01475 888400
Mon/Fri - 9.30am - 5pm
Tue/Wed/Thur - 9am - 5pm

House to sell?

Arrange a free appraisal of your current home.

Require a solicitor?

Ask for a free legal quotation from
Neill Clerk & Murray, Solicitors.
www.neillclerkmurray.co.uk

**60 West Blackhall Street
Greenock**

PA15 1UY

t:01475 888400

f:01475 888500

e: sales@neillclerk.co.uk

w: www.neillclerk.co.uk

Agents Notes:

These sales particulars are set out as a general outline only, issued in good faith, but do not constitute representations of fact and do not form part of any offer or contract. Any services, equipment, appliances, fittings or central heating systems have not been tested and no warranty is given or implied that these are in working order. All measurements are approximate and for guidance only.

Neither Neill Clerk Estate Agents nor any of its employees or agents has any authority to make or give any representation or warranty whatever in relation to this property.

rightmove 
Zoopla.co.uk

 **neillclerk**
ESTATE AGENTS