



MILES ESTATE AGENTS

Piffins, Piffin Lane,
Bishops Lydeard TA4 3AS



An individual detached modern house, commissioned by the owners in 2002, offering deceptively spacious and well presented accommodation including 3 reception rooms, 4 double bedrooms (one on the ground floor) and 3 bathrooms. Peacefully situated at the end of a private lane with manageable gardens and outlook over fields on the edge of this superb Quantock village. Double garage and lots of parking - early viewing highly recommended.





Features:

- Entrance Porch
- Reception Hall with Vaulted Ceiling
- Spacious Sitting Room
- Generous Dining Room
- Kitchen/Breakfast Room
- Good Size Study
- Large Conservatory with Views
- Utility
- Cloakroom
- Ground Floor Double Bedroom with En Suite Wet Room
- Master Bedroom with Dressing Area & Full En Suite Bathroom
- 2 Further Double Bedrooms
- Separate Shower Room
- Enclosed Landscaped Garden with Views Over Fields
- Double Garage & Lots of Parking
- Council Tax Band F
- No Onward Chain

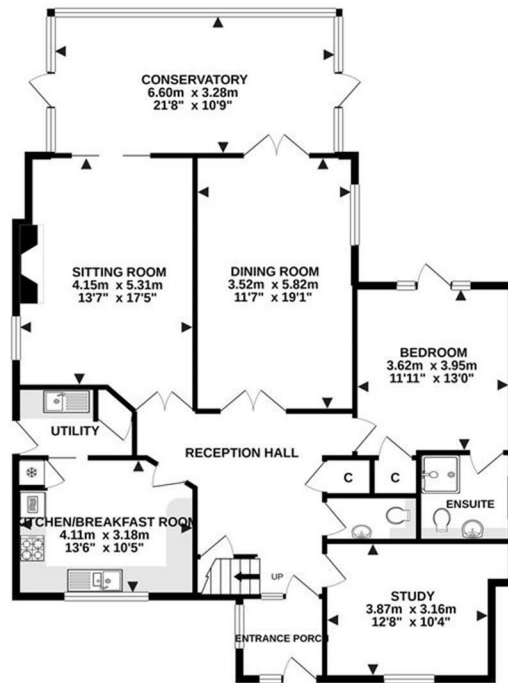






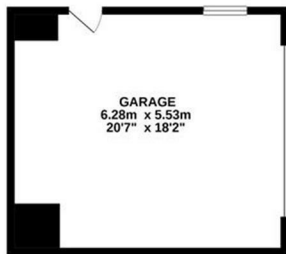


GROUND FLOOR
135.6 sq.m. (1460 sq.ft.) approx.

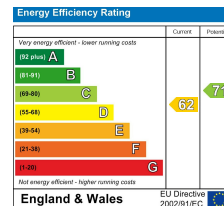
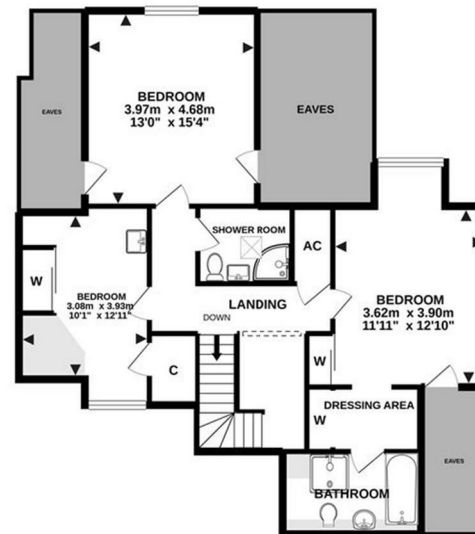


TOTAL FLOOR AREA : 247.1 sq.m. (2659 sq.ft.) approx.
Made with Metropix ©2021

GARAGE
33.1 sq.m. (357 sq.ft.) approx.



1ST FLOOR
78.3 sq.m. (843 sq.ft.) approx.



Viewings strictly through the selling agents:

Miles Estate Agents

2 Piffin Lane, Bishops Lydeard, Taunton,
Somerset, TA4 3AS

Tel: 01823 470 500

lydeard@milesestateagents.co.uk

www.milesestateagents.co.uk



MILES ESTATE AGENTS

rightmove

Zoopla.co.uk

OnTheMarket.com

