

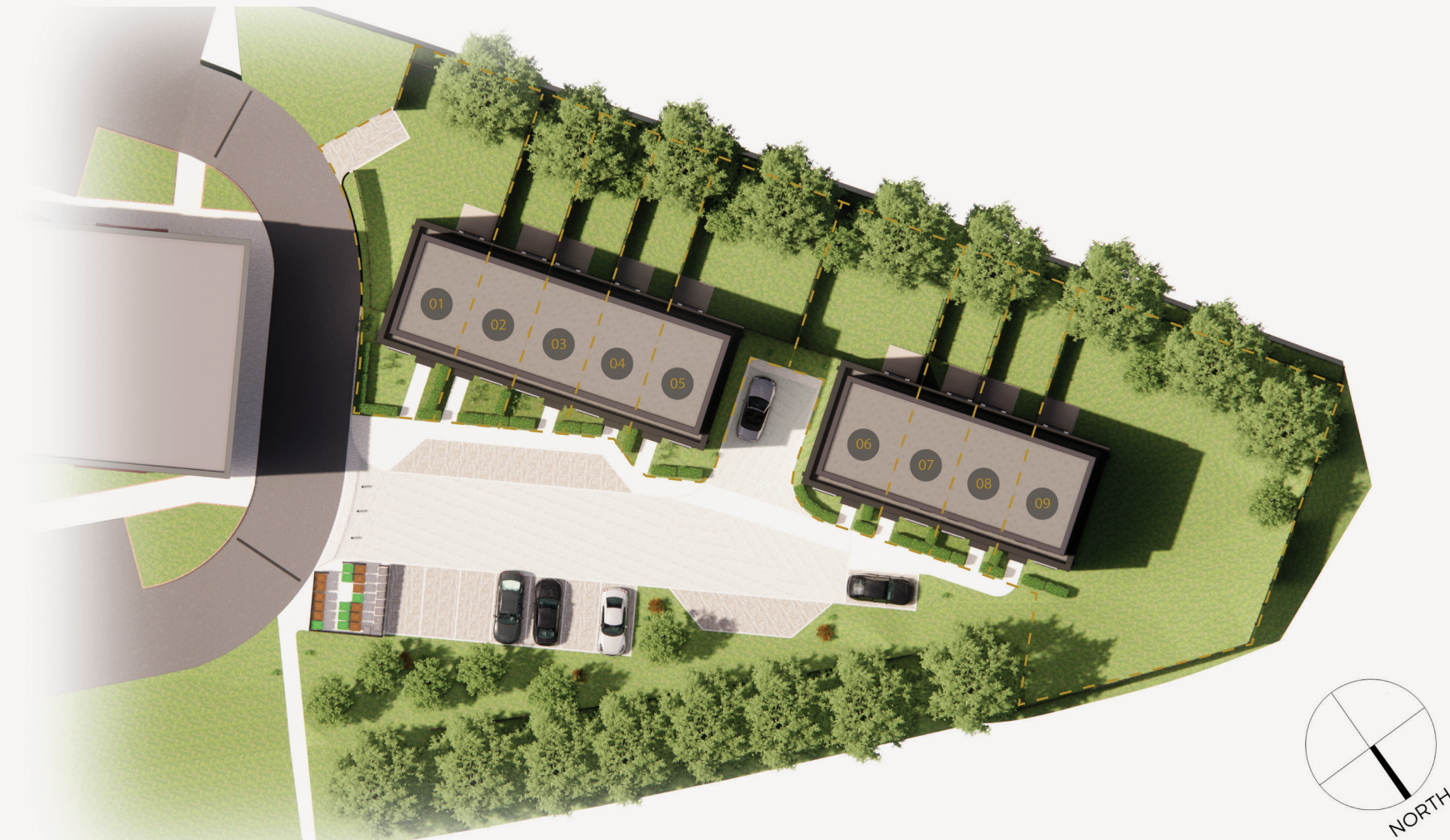


Modern family living

A development of nine luxury townhouses situated in the heart of Solihull
The Mews, Streetsbrook Road, Solihull B91 1RD



Site Map



Welcome to The Mews at Broadoaks

A unique collection of luxury designed three and four bedroom homes, just moments away from Solihull Town Centre.

Luxury living in Solihull

Both the Malvern and Brueton style homes are finished to an exemplary standard and thoughtfully designed for today's family living.

Offering beautiful light and space, each home benefits from the highest specification which includes a luxury modern kitchen with fully integrated appliances and an envious silestone work top. The bathroom and en suite are fully tiled with Vitra sanitaryware and a wall mounted vanity mirror. Each property has a private garden, attractive glazed Juliette balcony to the front and allocated parking which all benefit from an individual electric car charging point.

The property will come with a 10 year ICW warranty.



THE MEWS

AT BROADOAKS



For more information...
Call 0121 744 4144 Option 3
or email newhomes@smart-homes.co.uk

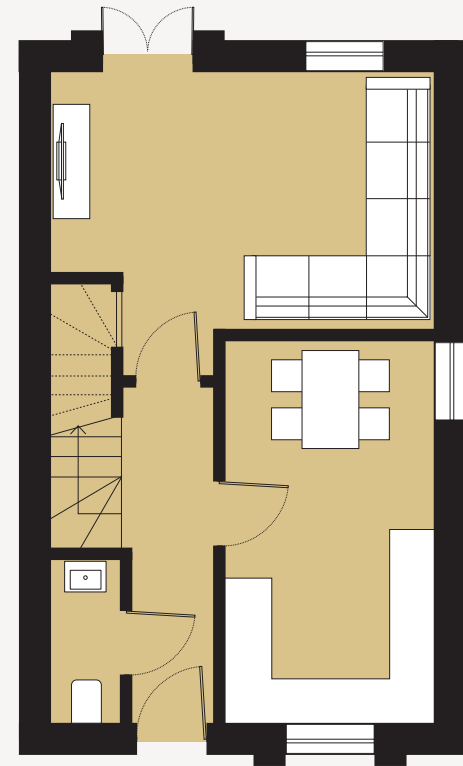


The Brueton

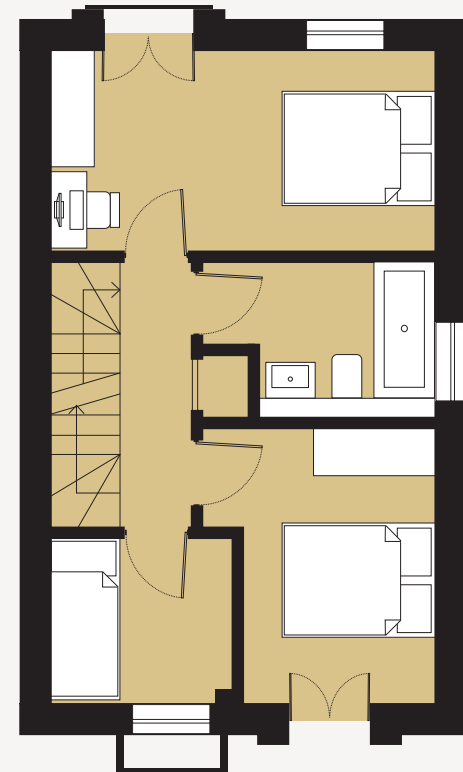
4 bedroom (4 number in total)

Room Specifications

	Metric	Imperial
Gross Internal Area	105 sqm	1130 sqft
Room dimensions: (largest dimensions)		
Kitchen Dining	4.80 x 2.65m	15.7' x 8.5'
Living	4.80m x 3.83m	15.7' x 12.4'
WC	2.10m x 0.90m	6.8' x 2.9'
Bed 1	4.15 x 6.45m (inc. dressing)	13.6' x 21.0'
Master E/S	2.30 x 2.150m	7.5' x 7'
Bed 2	2.55 x 4.80m	8' x 15.7'
Bed 3	2.90 x 3.45m	9.5' x 11.3'
Bed 4	2.30 x 2.10m	7.5' x 6.8'
Bathroom	2.90m x 1.95m	9.5' x 6.3'



Ground floor



First floor



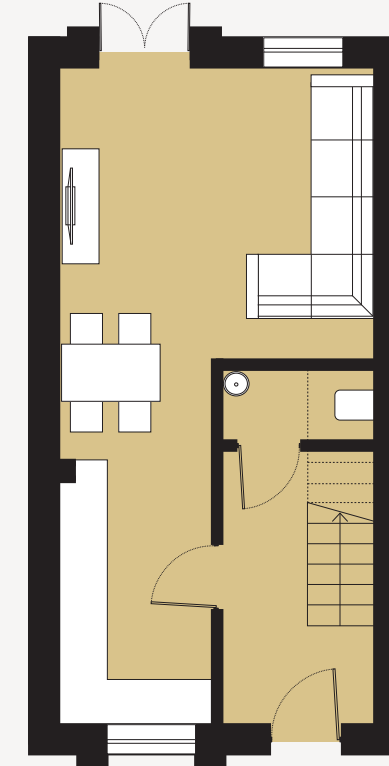
Second floor

The Malvern

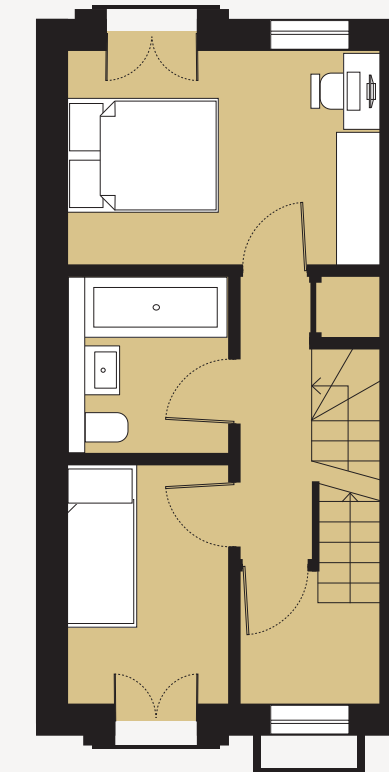
3 bedroom (5 number in total)

Room Specifications

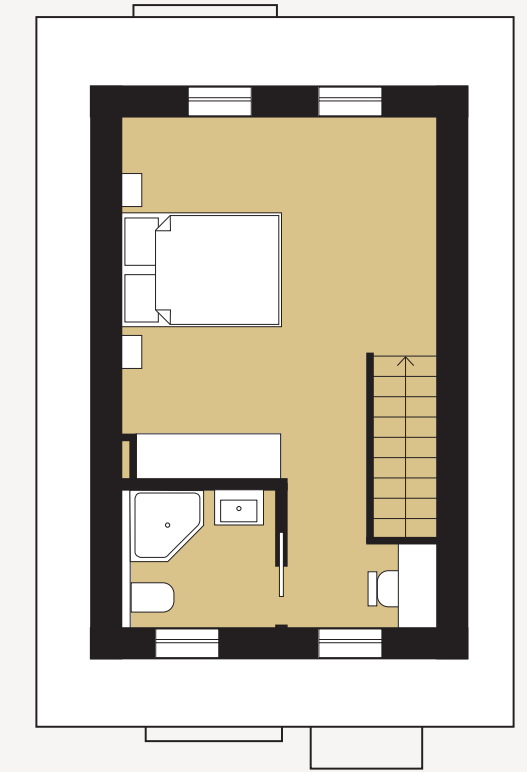
	Metric	Imperial
Gross Internal Area	89.65 sqm	965 sqft
Room dimensions: (largest dimensions)		
Kitchen Dining	1.90 x 4.53m	6.2' x 14.8'
Living	3.95 x 3.62m	12.9' x 11.8'
WC	1.95 x 0.90m	6.3' x 2.9'
Bed 1	3.95 x 6.45m (inc. dressing)	12.9' x 21.1'
Master E/S	1.80 x 1.95m	5.9' x 6.3'
Bed 2	3.95 x 2.72m	12.9' x 8.9'
Bed 3	3.0m x 2.05m	9.8' x 6.7'
Bathroom	2.23m x 2.05m	7.3' x 6.7'



Ground floor



First floor



Second floor

Incredible range of facilities on your doorstep

The Mews is perfectly positioned offering the blend of secluded and private exclusivity with the convenience and ease of access to the modern hustle and bustle of Solihull Town Centre.

It is no wonder that Solihull is consistently being voted as one of the best places to live in the UK, with over 1500 acres of parkland and excellent educational facilities, both with schools and colleges having outstanding Ofsted reports. Solihull is deemed to be a most desirable place to live.

Solihull is a shoppers heaven with an abundance of shops and retail outlets within the popular Touchwood shopping centre with John Lewis and Waitrose being literally on your doorstep. There

is a large selection of bars and restaurants to suit everyone's taste, and entertainment in the way of a multi screen cinema.

There are many attractions on your doorstep including the National Exhibition Centre, The Motorcycle Museum, The National Indoor Arena and The Resorts World and Arena; whether you want to catch up with friends in the many bars and restaurants or go and see your favourite performer the local area has everything to offer.

Location

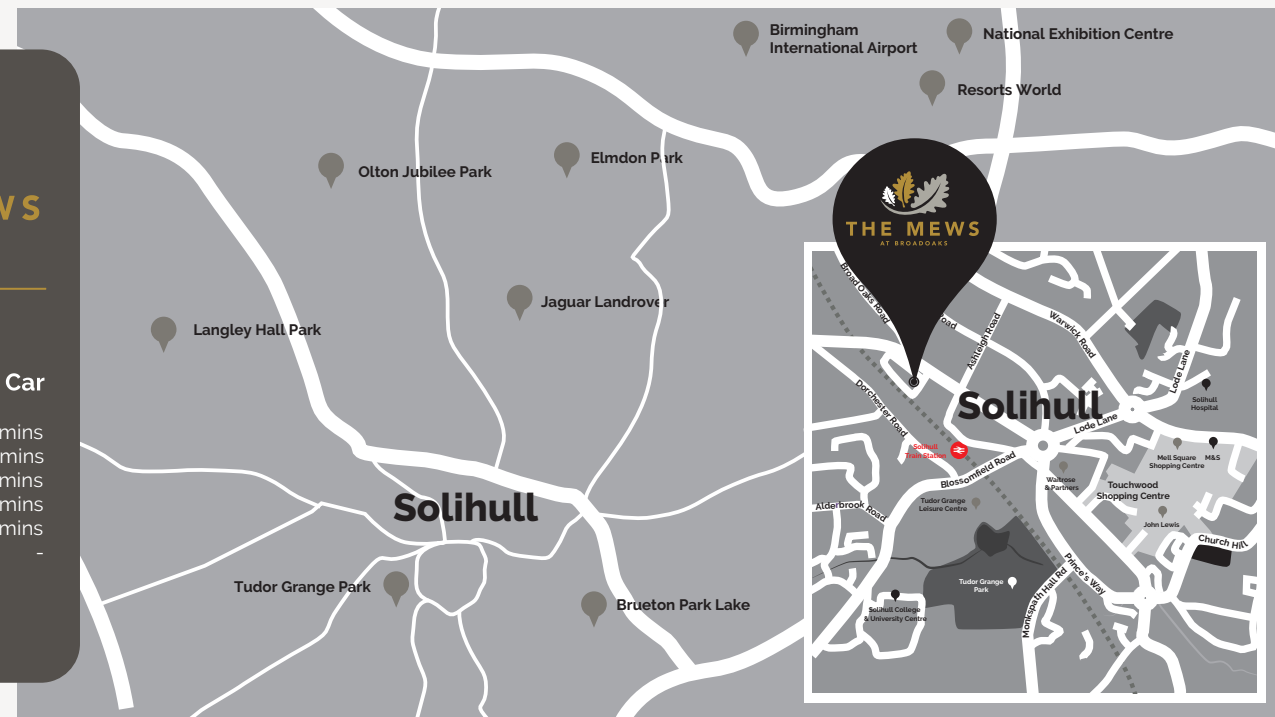
THE MEWS, Streetbrook Road, Solihull, B91 1RD



Places & Travel Times

	By Train	By Car
Birmingham Moor Street (City Centre)	9 mins	27 mins
Birmingham International Airport	46 mins	15 mins
Coventry	57 mins	26 mins
Worcester	1 hr 22 mins	45 mins
London Marylebone	1 hr 45 mins	2 hrs 18 mins
London from HS2 Interchange	38 mins	-

PLEASE NOTE: All timings given are approximate.



Specification

Kitchen/Breakfast Room

- Fully fitted kitchen
- Quartz worktop
- Quartz Splashback
- Integrated NEF appliances: Fidge Freezer, Dishwasher, Oven hob and hood
- Rangemaster - undercounter sink
- Rangemaster monoblock mixer tap
- Brush Steel Downlighters
- Ceramic Tile Flooring

Bathrooms/Ensuites & Cloakrooms

- Vitra - Sanitaryware
- Rhooper Rhodes - Vanity unit
- Vitra, Nest Cloakroom Wall Hung Vanity & Washbasin (4 Beds)
- Bristan - Fixtures, showers and fittings
- Bathroom Mirror - fitted above the vanity unit
- Porcelain tiles 600 x 300 (amount)
- Brush Steel Downlighters
- Chrome Towel Radiators
- Ceramic Tile Flooring

Media & Communications

- Boilers TBC
- Nest heating system
- Planar horizontal radiators

Interiors

- Vesta Space Wardrobes to Master Bedroom in three bed and bed two in the four bed
- White Panelled internal doors
- Brush steel chrome sockets and switches throughout
- Glass Balustrade with stainless steel handrails

Exteriors

- Aluminium Grey External Doors
- Powder coated Juliette Balconies
- Black Entrance Door
- Wall lights
- Patio (Buff/Charcoal) area to rear
- Braken brick paving to the front
- Hard and soft landscaping
- Fencing
- Remote Bollard Access
- Turfing





THE MEWS

AT BROADOAKS



smarthomes
LAND AND NEW HOMES

For more information...

Call 0121 744 4144 Option 3
or email newhomes@smart-homes.co.uk

INVESTIN PLC

www.investinplc.com



BESPOKE

www.bespokeconstruction.co.uk