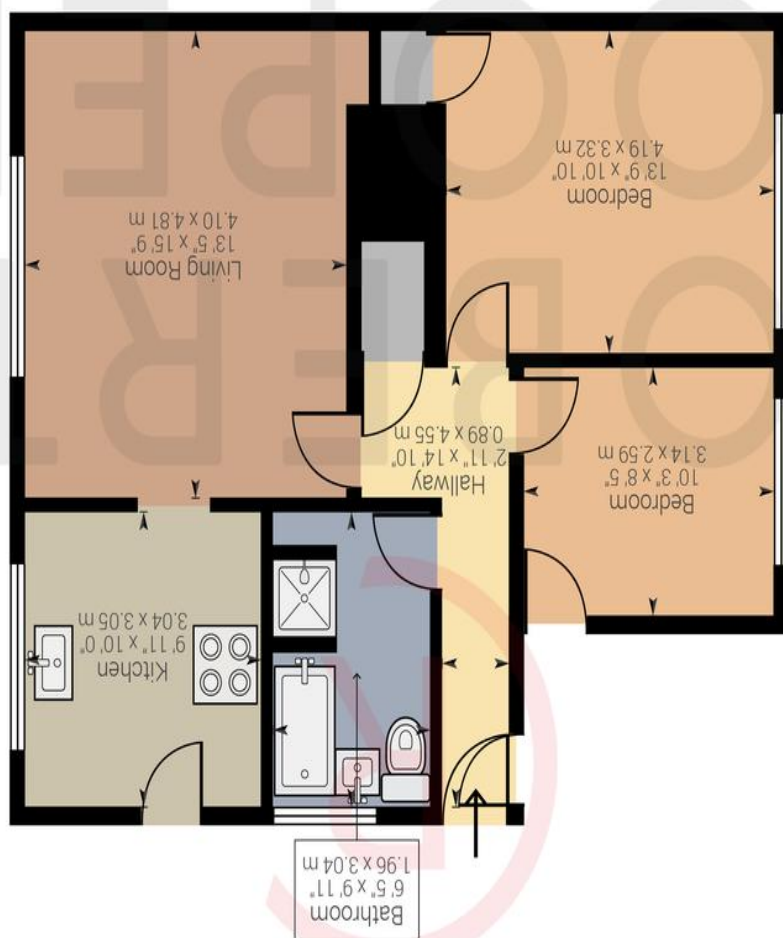


Powered by Giraffe360

Approximate net internal area: 701.85 ft<sup>2</sup> / 65.2 m<sup>2</sup>  
While every attempt has been made to ensure accuracy, all measurements are approximate, not to scale. This floor plan is for illustrative purpose only and should be used as such by any prospective tenant or purchaser.



EST. 1983



**BRIXHAM CRESCENT, HA4 8TX**  
**OFFERS IN EXCESS OF £425,000**





A stunning two double bedroom ground floor maisonette set on one of Ruislip Manor's most popular roads with easy access to its high street and train station. Features include freehold for the whole building, garage via own drive, off street parking, modern interiors, separate kitchen and living area, detached building and garden. The property is 0.3 miles away from Ruislip Manor high street and train station (Metropolitan & Piccadilly Line) and 0.4 miles away from the sought after Lady Bankes Primary School.

