



Hepworth Court, 30 Gatliff Road
London SW1W

GARTONJONES.COM



Hepworth Court, 30 Gatliff Road
London, SW1W

GARTON JONES.COM

8 Gatliff Road
Chelsea
London
SW1W 8DP

Lettings:
+44 (0) 20 7730 5007
gws@gartonjones.com
www.gartonjones.com

£460 Per Week

A bright and spacious ONE DOUBLE BEDROOM of approx 440 Sq.ft (40sq.m) apartment on Grosvenor Waterside located close to the banks of the River Thames by Chelsea Bridge. There is an open plan reception room with an integrated kitchen, a modern bathroom, comfort cooling, built in wardrobes to the bedroom. The property benefits from UNDERGROUND PARKING. 24 HOUR CONCIERGE, GYM & SPA. On-site Sainsbury's Local, coffee shop and private kids club. SLOANE SQUARE & VICTORIA station with Gatwick Express are within walking distance.

- 440 Sq.ft (40sq.m)
- 1 Double Bedroom
- Modern Bathroom
- Open Plan Reception Room
- Integrated Kitchen
- 24 Hour Concierge
- Close to Sloane Square & Victoria Station
- Secure Underground Parking
- Residents Gym With Spa Facilities

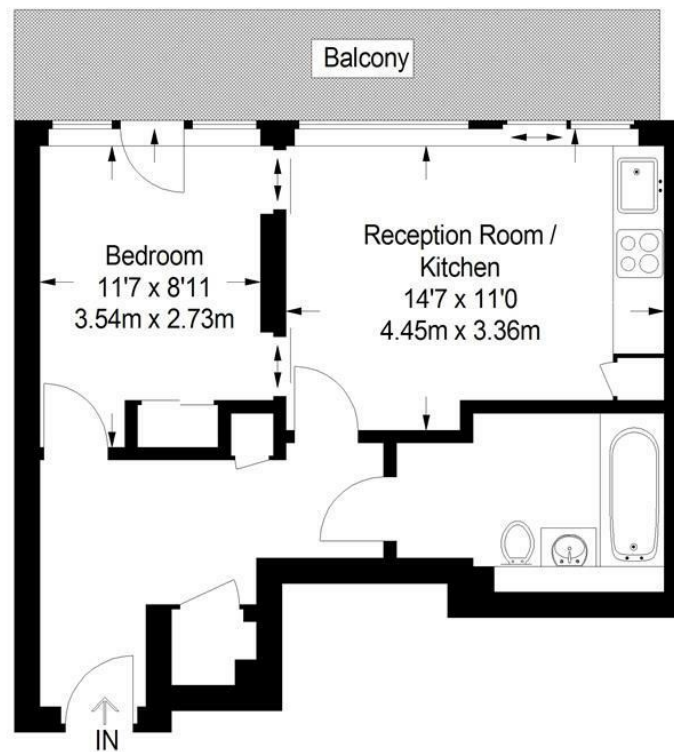


Available via Garton Jones on-site office at Grosvenor Waterside (underneath Bramah House).

Please note furniture may differ to that shown in the current photos.

Hepworth Court

Approximate Gross Internal Area
440 sq ft / 40.9 sq m



Sixth Floor

