



Sutton Lane North, London, W4 4LE

£575,000

WHITMAN & CO.

SALES · LETTINGS · COMMERCIAL

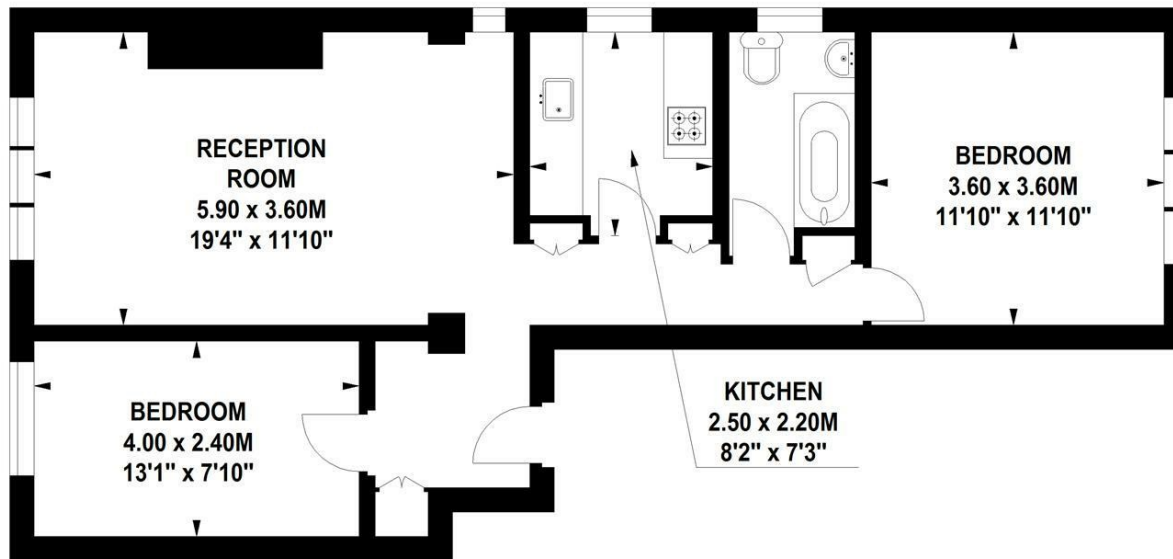
- Fourth floor with lift access
- Triple aspect far reaching views
- Conveniently located for Chiswick High Road
- Communal gardens with swimming pool
- Communal heating and hot water
- No chain

Tenure - Leasehold with a share in the freehold
 Lease Length - 900+ years
 Reserve Fund - £1514 pa
 Service Charge - £2452 pa
 Local Authority - Hounslow
 Council Tax - D

Beaumont Court, W4

Approximate gross internal area

65.40 sq m / 704 sq ft



Fourth Floor

Not to scale, for guidance only and must not be relied upon as a statement of fact.
 All measurements and areas are approximate only

THE PROPERTY

A lovely triple aspect apartment located on the 4th floor of the centrally located mansion block and benefitting from far-reaching views and lift access. The flat is presented in good order and is very light throughout. the accommodation comprises a dual aspect reception room with space for a dining table, fitted kitchen, two double bedrooms, bathroom, entrance hall, list access, porter, extensive communal gardens and swimming pool. The flat is also being sold with a share in the freehold and long lease with heating and hot water included in the service charge. Beaumont Court is in an excellent location with a few minutes walk of Chiswick High Road's shops, cafes and restaurants and Turnham Green. Transport links include Chiswick Park and Gunnersbury stations (5 mins walk each), local bus routes and the A4/M4 for routes in and out of London. No chain.

SITUATION



5-7 Turnham Green Terrace, Chiswick, London, W4 1RG

Tel 020 8747 8800

E-mail sales@whitmanandco.com

Website www.whitmanandco.com