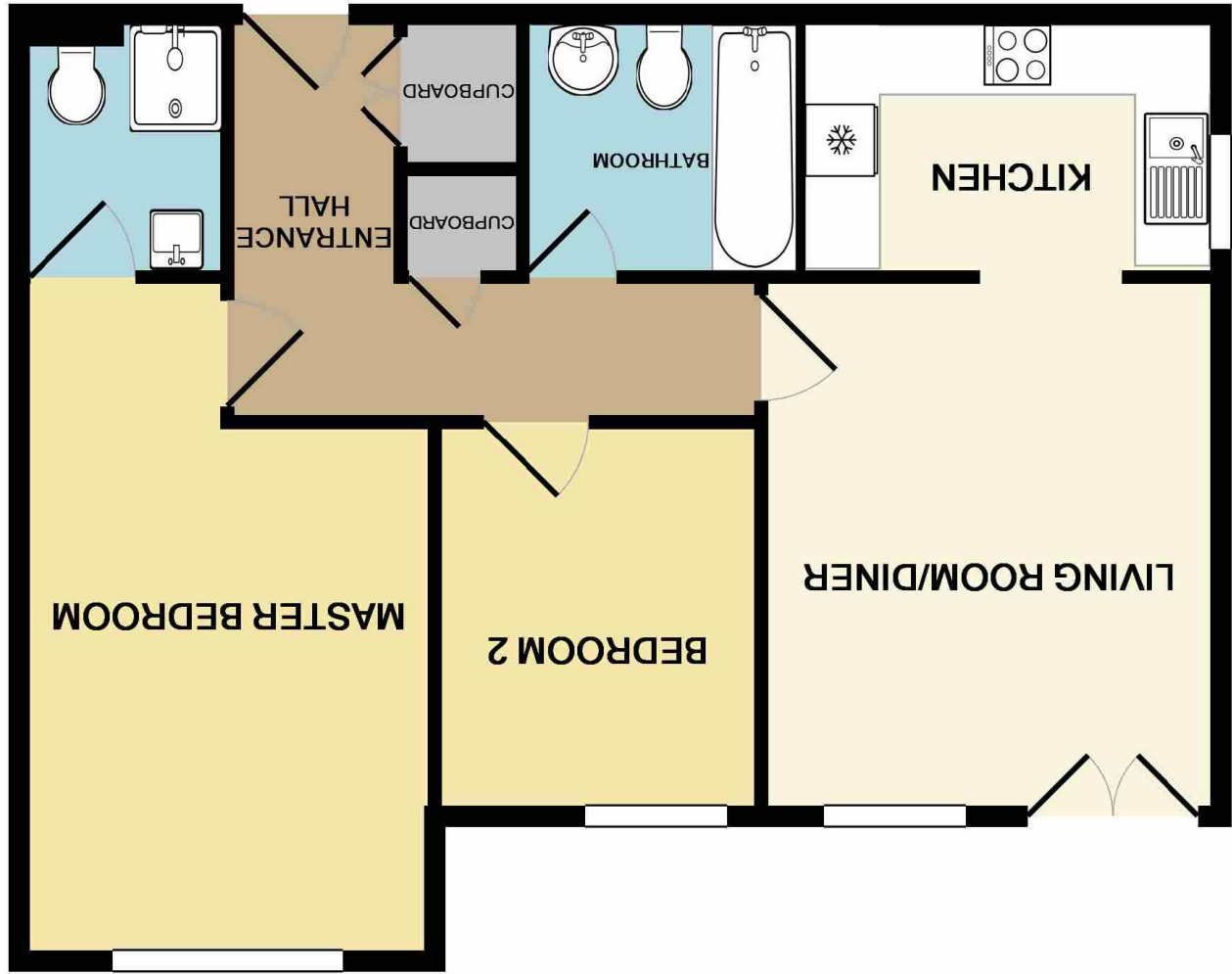


These particulars are believed to be accurate but they are not guaranteed and do not form a contract. Neither Jordan Fishwick nor the vendor or lessor accept any responsibility in respect of these particulars, which are not intended to be statements or representations of fact and any intending purchaser or lessee must satisfy himself by inspection or otherwise as to the correctness of each of the statements contained in these particulars. Any floorplans on this brochure are for illustrative purposes only and are not necessarily to scale.

Measurements are approximate. Not to scale. Illustrative purposes only
Made with Metropix ©2019





Tall Trees, West Didsbury
M20 2PE
£875 Per calendar month



The Property

*** AVAILABLE MID MARCH *** A superbly presented two bedroom first floor apartment situated in a modern building in West Didsbury, only a 10 minute walk to the Metrolink. Furnished to a good standard, the accommodation briefly comprises; tidy communal areas, spacious hallway with storage cupboards, good sized lounge with juliet balcony, kitchen with range of appliances, very large master bedroom with en-suite shower room, second double bedroom and a family bathroom. Private underground parking space provided. Fully Furnished. Call 0161 434 5290 to arrange a viewing.

Directions

Postcode - M20 2PE

EPC Rating - C

Floor Area - sq ft

Local Authority -

Council Tax - Band

