



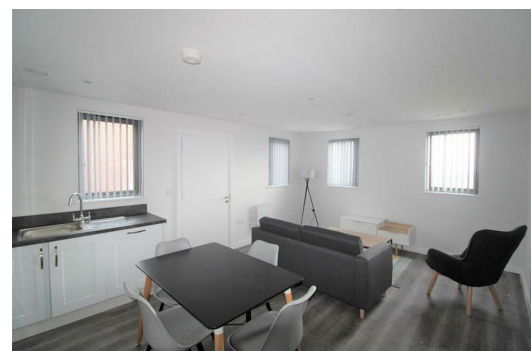
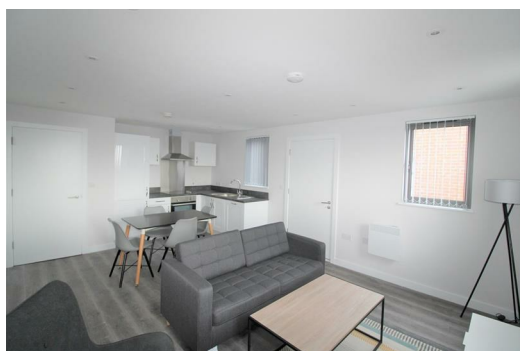
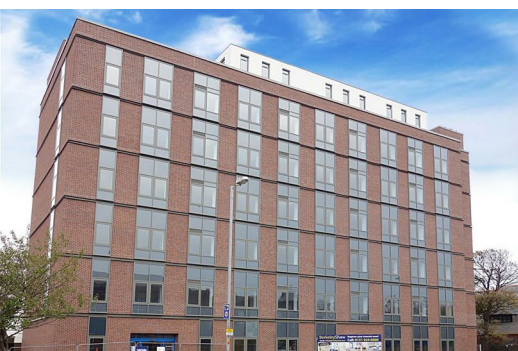
## Crosby Gardens, 16 Crosby Road North, Liverpool, Merseyside L22 0AD

£1,100 PCM

PENTHOUSE APARTMENT AVAILABLE WITH PRIVATE ENTERTAINING SPACE ON ROOF TOP TERRACE, PARKING INCLUDED  
LUXURY - STUNNING- DELUXE - COMFORTABLE are a few words to Describe the newest Development to come on the RENTAL market CROSBY GARDENS is set in the heart of one of Liverpool's most affluent suburbs. This 6th Floor Roof Top Apartment with Private Exterior Entertaining Space .The Development is within minutes of Crosby Beach, these beautifully-appointed apartments are designed for professionals working in the city, but looking for a relaxed coastal lifestyle. Crosby Beach is home to Sir Antony Gormley's iconic art installation, 'Another Place'.

Crosby was recently named by 'The Sunday Times' as one of the top 5 places to live in the North West and is popular with sports stars and celebrities. Crosby Gardens complete with concierge, integrated appliances, and optional on-site parking.

PLEASE CALL TO BOOK APPOINTMENT 01519246000



## Hallway

Storage Cupboard with plumbing for washing machine

## Walk in Storage Room

Plumbing for washing machine

## Lounge/ Kitchen

Double glazed window, electric wall heaters, wooden flooring, kitchen comprises of a range of fitted base and wall units, integrated Electric Oven and Hob, Fridge Freezer, dishwasher

## Bedroom 1

Double glazed window, electric heater, furnishing includes: - Double bed with mattress, side tables, chest of drawers, built in wardrobes

## Ensuite Shower Room

Fully tiled, walk in electric shower, low level w.c. sink unit.

## Bedroom 2

Double glazed window, electric heater, furnishing includes: - Double bed with mattress, side tables, chest of drawers, built in wardrobes

## Bathroom

Fully tiled, walk in electric shower, low level w.c. sink unit.

## Private Exterior Sapce

Private enclosed space, fully decked entertaining area with fantastic views

