



Fulham Reach, Hammersmith, W6

£2,000 Per Week

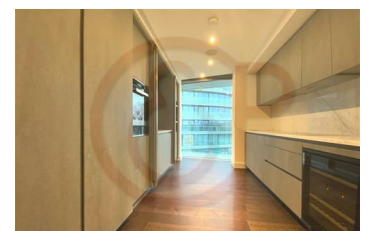
A luxurious brand new three bedroom & three bathroom flat of this beautiful riverside development situated on the second floor in Hammersmith.

The property comprises a spacious reception with dining space, brand new fully fitted kitchen with wine cooler, three double bedrooms, three luxurious bathrooms, extra utility room, a large private balcony and an underground parking space.

The property further benefits from a 24-hour concierge, residents' gym, swimming pool, golf simulator, wine cellar, snooker table, cinema room and a spa.

The development is ideally located within walking distance to Hammersmith underground station, which is serviced by the Circle, District, Piccadilly and Hammersmith & City lines.

- Riverside development
- Three double bedrooms
- Underground parking space
- Virtual golf playing room & cinema room
- Spacious reception
- Three luxurious bathrooms
- 24 hours concierge
- Brand new fully fitted kitchen
- Private balcony
- Residential gym and swimming pool



Energy Efficiency Rating		Environmental Impact (CO ₂) Rating	
Current	Target	Current	Target
Energy efficient: lower heating costs		Very environmentally friendly: lower CO ₂ emissions	
A		A	
B		B	
C		C	
D		D	
E		E	
F		F	
G		G	
Not energy efficient: higher heating costs		Not environmentally friendly: higher CO ₂ emissions	
England & Wales	2008/1/EC	England & Wales	2009/1/EC