

Parkheath

Sold on Service

Grafton Road NW5

£277 per week (£1,200.33 Pcm)



Bright and spacious one bedroom apartment

Modern open plan kitchen/diner

Wooden flooring throughout

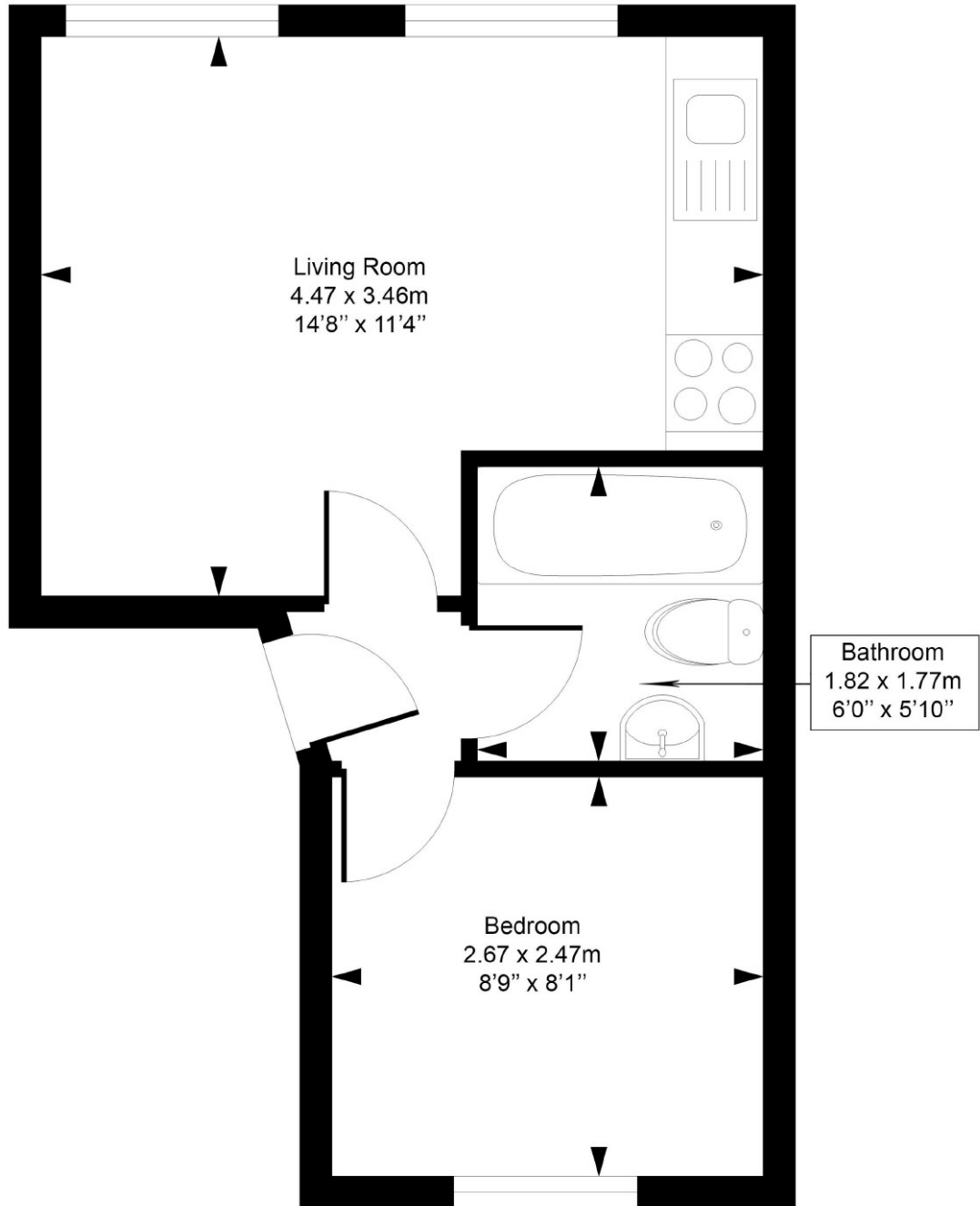
3 piece tiled bathroom suite

Located within 5 minutes walk to Hampstead Heath

Gospel Oak and Kentish Town stations within a short walk (Overground, Northern Line and Thames Link Zone 2)

Grafton Road

Approximate Gross Internal Area = 290 sq.ft / 27 sq.m



First Floor

Measured in accordance with RICS guidelines. Every attempt is made to ensure accuracy
However all measurements are approximate.

The floor plan is illustrative purposes only and is not to scale

ELLIE CLAIRE PHOTOGRAPHY LTD

www.ellieclairephotography.com

The particulars do not constitute part of an offer or contract. The particulars, including text, photographs and plans, are for the guidance only of prospective purchasers/tenants and must not be relied upon as statements of fact. The descriptions provided therein represent the opinion of the author and whilst given in good faith should not be construed as statements of fact. Nothing in these particulars shall be deemed a statement that the property is in good condition or otherwise or that any services or facilities are in good working order. All measurements are approximate.