

ALBERT HALL MANSIONS, LONDON



£1,650 per week
TO LET

Breteuil
REMARKABLE HOMES

ALBERT HALL MANSIONS, KENSINGTON GORE



- In the heart of South Kensington
- Portered mansion
- Very high ceilings
- Wooden floors
- 3 bedrooms
- 2 bathrooms
- available now

In a beautiful portered mansion located next to the Royal Albert Hall, within an easy access to Kensington Gardens and Hyde Park, a short walking distance to South Kensington, Gloucester Road and High Street Kensington tube stations, close to all the amenities, restaurants and shops of Knightsbridge and South Kensington, a well-presented three-bedroom apartment comprising an entrance hall, a reception room, a kitchen/breakfast room, a master bedroom with an en-suite bathroom, a further bedroom, a shower room, a guest cloakroom, a media room (or 3rd bedroom) and a balcony.

ALBERT HALL MANSIONS, KENSINGTON GORE

In a beautiful portered mansion located next to the Royal Albert Hall, within an easy access to Kensington Gardens and Hyde Park, a short walking distance to South Kensington, Gloucester Road and High Street Kensington tube stations, close to all the amenities, restaurants and shops of Knightsbridge and South Kensington, a well-presented three-bedroom apartment comprising an entrance hall, a reception room, a kitchen/breakfast room, a master bedroom with an en-suite bathroom, a further bedroom, a shower room, a guest cloakroom, a media room (or 3rd bedroom) and a balcony.

£1,650 per week

TO LET

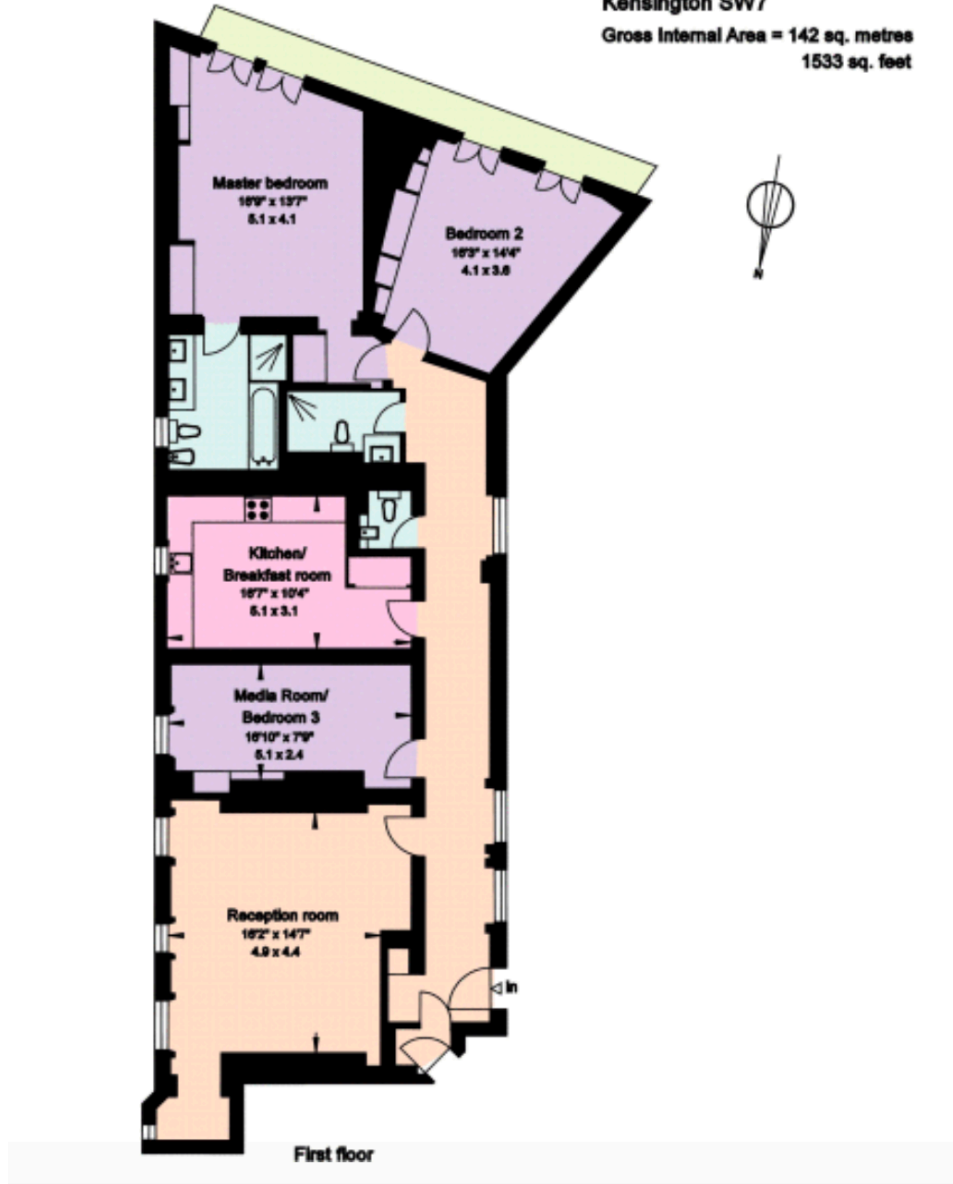
These particulars do not form part of any offer or contract and must not be relied upon as statements or representations of fact. Any areas, measurements or distances are approximate. The text, photographs and plans are for guidance only and are not necessarily comprehensive. It should not be assumed that the property has all the necessary planning, building regulation or other consents and we have not tested any services, equipment or facilities. Purchasers must satisfy themselves by inspection or otherwise.

Breteuil

REMARKABLE HOMES

ALBERT HALL MANSIONS, KENSINGTON GORE

Albert Hall Mansions
Kensington Gore
Kensington SW7
Gross Internal Area = 142 sq. metres
1533 sq. feet



£1,650 per week
TO LET

These particulars do not form part of any offer or contract and must not be relied upon as statements or representations of fact. Any areas, measurements or distances are approximate. The text, photographs and plans are for guidance only and are not necessarily comprehensive. It should not be assumed that the property has all the necessary planning, building regulation or other consents and we have not tested any services, equipment or facilities. Purchasers must satisfy themselves by inspection or otherwise.

Breteuil
REMARKABLE HOMES