

PARSON

Your Local Independent Estate Agent

Caxton House
Victoria Road
Diss Norfolk
IP22 4JN

01379 646180
lucy@parson.ltd.uk
www.parson.ltd.uk



The Thoroughfare
Harleston, Norfolk

£600 pcm



**First Floor Apartment 1 Bedroom Character Features Electric Night Storage Heating
Furnished or Unfurnished Town Centre Location Available Now!**

First floor apartment with bags of character, positioned over a café in the centre of town, 1 bedroom, electric night storage heating. Available either furnished or unfurnished Now! **EPC=E**

LOCATION

Harleston is a popular south Norfolk town with excellent amenities including shops, supermarket, schools, health and recreational facilities together with regular bus service. Diss is about 9 miles to the west with main line railway station to London (Liverpool Street).

PRIVATE ENTRANCE HALL

Front entrance door, electric night storage heater, stairs to first floor.

LANDING

KITCHEN 10' 7" x 9' 1" (3.23m x 2.77m) max

Range of fitted base units, work surfaces, inset single drainer sink unit, freestanding cooker, washing machine, fridge, window to rear, skylight window, airing cupboard housing hot water cylinder, night storage heater, vinyl flooring, optional table and chairs.

BATHROOM

White suite comprising panelled bath with electric shower over, pedestal hand wash basin, low level WC, window to rear.

BEDROOM 10' 3" x 8' 10" (3.12m x 2.69m)

Window to front, fitted curtains, electric night storage heater. Optional furniture including metal framed double bed, bedside table, lamp, small chest of drawers and mirror.

SITTING ROOM 16' 3" x 11' 11" (4.95m x 3.63m) max

Window to front, fitted curtain, electric night storage heater. Optional furniture including bookcase, coffee table, two seater sofa, sofa-bed, single wardrobe, shelving unit and mirror.

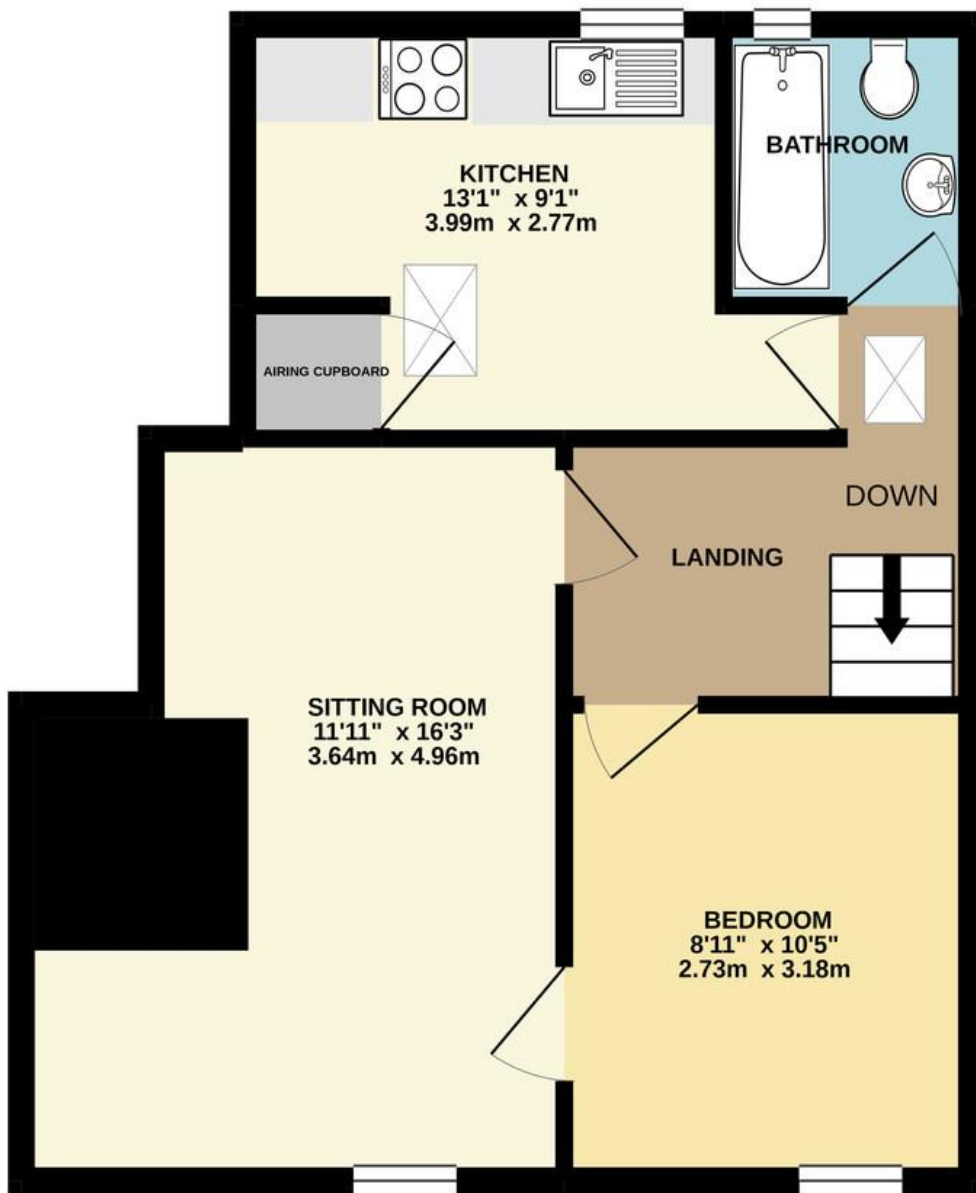
AGENTS NOTE No smokers, no pets.

EPC RATING E

COUNCIL TAX BAND A South Norfolk Council

DIRECTIONS The Thoroughfare is in the centre of Harleston and forms part of the one-way system.

FIRST FLOOR
445 sq.ft. (41.3 sq.m.) approx.



TOTAL FLOOR AREA : 445 sq.ft. (41.3 sq.m.) approx.

Whilst every attempt has been made to ensure the accuracy of the floorplan contained here, measurements of doors, windows, rooms and any other items are approximate and no responsibility is taken for any error, omission or mis-statement. This plan is for illustrative purposes only and should be used as such by any prospective purchaser. The services, systems and appliances shown have not been tested and no guarantee as to their operability or efficiency can be given.
Made with Metropix ©2021

