

**FOR SALE**



**Storrington Avenue , Liverpool**  
**Asking Price Of £55,000**

  
**MARTIN&CO**

# Storrington Avenue , Liverpool

Asking Price Of £55,000

- Duplex Apartment
- Two Bedrooms
- Spacious Living Space
- Ideal Investment
- Tenant in Situ

Brought to the Market by Martin & Co is this two-bedroom duplex apartment in the well know area of Croxteth. Ideal for anyone looking for an investment as this property is already occupied with a sitting

Brought to the Market by Martin & Co is this two-bedroom duplex apartment in the well know area of Croxteth. Ideal for anyone looking for an investment as this property is already occupied with a sitting tenant. Situated a walk away from East Lancashire Road where you will find all amenities such as shops, schools and transport links to and from the City Centre. Compromising: Hallway, Spacious Lounge, Kitchen, two bedrooms to the upper floor and bathroom. Call Now To Arrange Your Appointment!



## HALLWAY

Main access to flat and access to storage cupboard.

## LOUNGE

15' 3" x 10' 10" (4.669m x 3.321m)

Good sized living area with UPVC windows, power points, electric heater and door which leads access to upstairs floor.

## KITCHEN

8' 7" x 10' 8" (2.640m x 3.256m)

Reasonable sized kitchen with tiled flooring, stainless steel sink and drainer, UPVC double glazed window, Space for cooker hob and fridge freezer, part tiled walls and power points

## BEDROOM ONE

12' 2" x 10' 10" (3.725m x 3.314m)

This spacious master bedroom has a window overlooking to rear of the building, electric heaters, storage cupboard and power points

## BEDROOM TWO

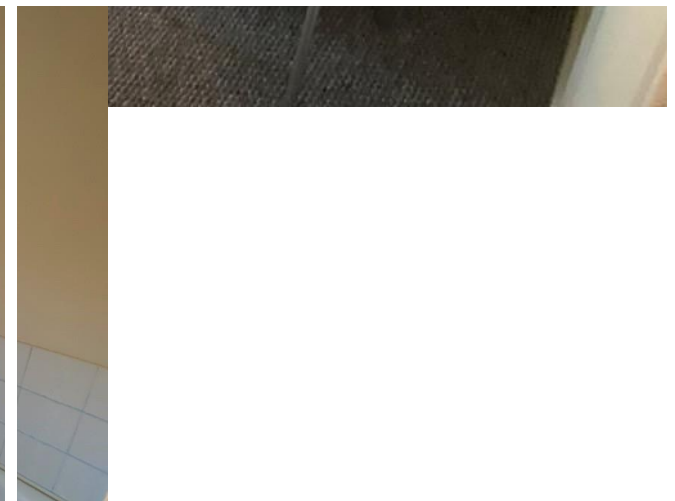
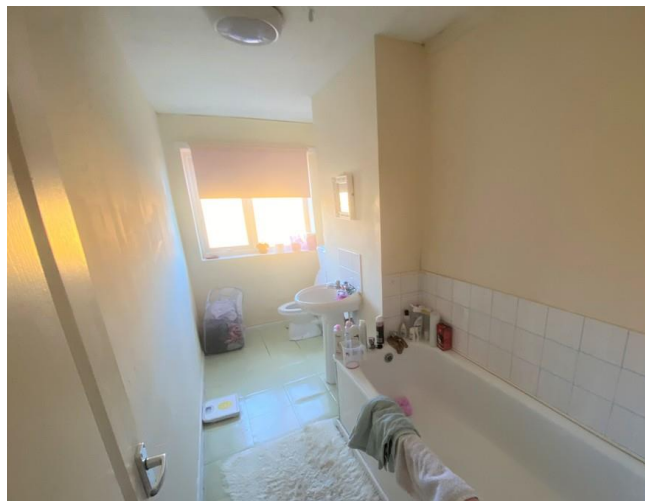
12' 5" x 8' 6" (3.792m x 2.601m)

This bedroom has a patio styled door leading to balcony, electric heater and power points.

## BATHROOM

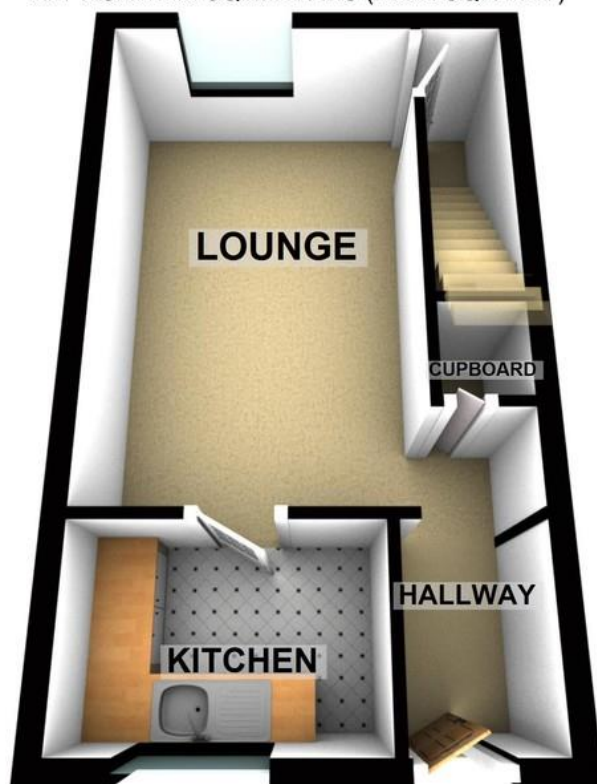
12' 5" x 5' 1" (3.796m x 1.554m)

This spacious bathroom has tile effect flooring, three piece bathroom suite, panelled bath, pedestal sink and UPVC double glazed frosted window.



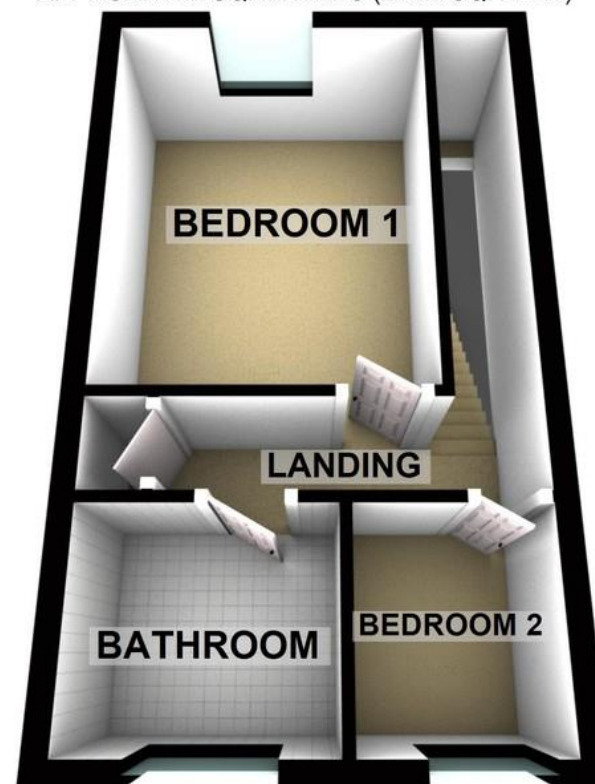
## GROUND FLOOR

APPROX. 23.8 SQ. METRES (256.6 SQ. FEET)



## FIRST FLOOR

APPROX. 24.0 SQ. METRES (258.0 SQ. FEET)



TOTAL AREA: APPROX. 47.8 SQ. METRES (514.5 SQ. FEET)

This plan is for illustrative purposes only and cannot be relied upon and no liability is taken for any errors.

Plan produced using PlanUp.

### Martin & Co Liverpool

19 Allerton Road • • Liverpool • L18 1LG

T: 0151 428 6922 • E: liverpoolsouth@martinco.com

# 0151 428 6922

<http://www.martinco.com>

**MARTIN&CO**

**Accuracy:** References to the Tenure of a Property are based on information supplied by the Seller. The Agent has not had sight of the title documents. A Buyer is advised to obtain verification from their Solicitor. Items shown in photographs including but not limited to carpets, fixtures and fittings are not included unless specifically mentioned within the sales particulars. They may however be available by separate negotiation. Buyers must check the availability of any property and make an appointment to view before embarking on any journey to see a property. No person in the employment of the agent has any authority to make any representation about the property, and accordingly any information given is entirely without responsibility on the part of the agents, sellers(s) or lessors(s). Any property particulars are not an offer or contract, nor form part of one. **Sonic / laser Tape:** Measurements taken using a sonic / laser tape measure may be subject to a small margin of error. **All Measurements:** All Measurements are Approximate. **Services Not tested:** The Agent has not tested any apparatus, equipment, fixtures and fittings or services and so cannot verify that they are in working order or fit for the purpose. A Buyer is advised to obtain verification from their Solicitor or Surveyor.