



24 Dunraven Road

Tycoch, Swansea, SA2 9LG

Asking Price £245,000



3



1



2



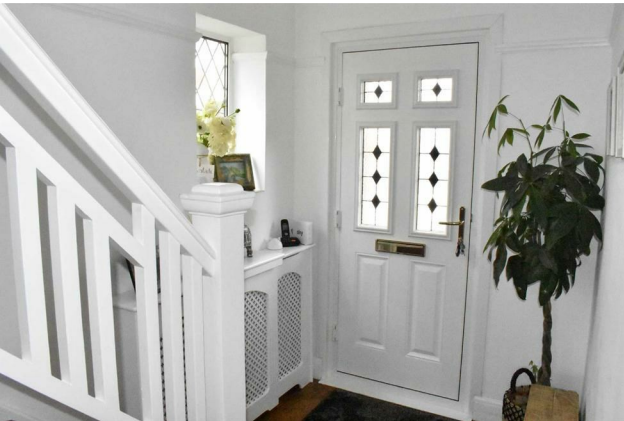
F



Dawsons  
*all things property*

## GENERAL INFORMATION

An immaculate and well kept three bedroom traditional style semi detached property situated in the desirable location of Tycoch. This bright and airy home comprises welcoming entrance hallway, lounge, open plan kitchen/dining room, two double bedrooms, single bedroom and a stylish family bathroom. Benefits include Upvc double glazing, gas central heating, original features, driveway parking and a detached double shed. Enjoying a pleasant front garden and a beautiful level enclosed laid to lawn rear garden with both patio and gravelled seating area. This stunning property would make an ideal family home within Sketty and Olchfa school catchment areas. Offering easy access to Tycoch square, Sketty Cross, Singleton hospital, Swansea Uni and the sea front. Internal viewing advised to appreciate this superb home. EPC - F



## FULL DESCRIPTION

Entrance

Hallway

Lounge

14'4" max x 11'5" max (4.38 max x 3.48 max)

Open Plan Kitchen/Dining Room

Kitchen

8'11" x 6'6" (2.72 x 1.99)

Dining Room

16'5" x 10'3" (5.01 x 3.12)

FIRST FLOOR

Landing

Bedroom One

16'3" max x 10'6" max (4.95 max x 3.19 max)

Bedroom Two

13'11" max x 10'5" (4.24 max x 3.18)

Bedroom Three

6'11" x 6'10" (2.10 x 2.09)

Bathroom

9'1" x 6'8" (2.76 x 2.04)

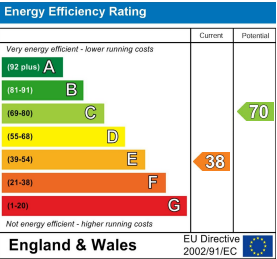
EXTERNAL

Front

Rear

## FLOOR PLAN

## EPC



These particulars, whilst believed to be accurate are set out as a general outline only for guidance and do not constitute any part of an offer or contract. Intending purchasers should not rely on them as statements or representations of fact, but must satisfy themselves by inspection or otherwise as to their accuracy. No person in this firm's employment has the authority to make or give any representation or warranty in respect of the property.