



## Flat 17, Dover House Anerley Road

London, SE20 8EN

**Asking Price £300,000**

Situated in a fantastic location in the ever so popular 'Dover House' is this well presented two bedroom apartment. Perfectly located for Penge High Street, Anerley road and the famous Crystal Palace Triangle all hosting an array of local shops, boutiques, restaurants, and leisure facilities as well as being 0.3 miles from Anerley Station, 0.5 miles from Birkbeck station and tram, 0.8 miles from Penge West station and 0.8 miles from Crystal Palace Station, all giving commuters flexible access into Central London (distances estimated via Google Maps).

This property would make an excellent first time buy or investment and comprises of; a spacious hallway with storage cupboard, a bright and airy reception room, a generous master bedroom, a second bedroom, bathroom and kitchen. The property also benefits from communal gardens to the front and further shared paved area in the middle of the development. The property also benefits from a long lease.

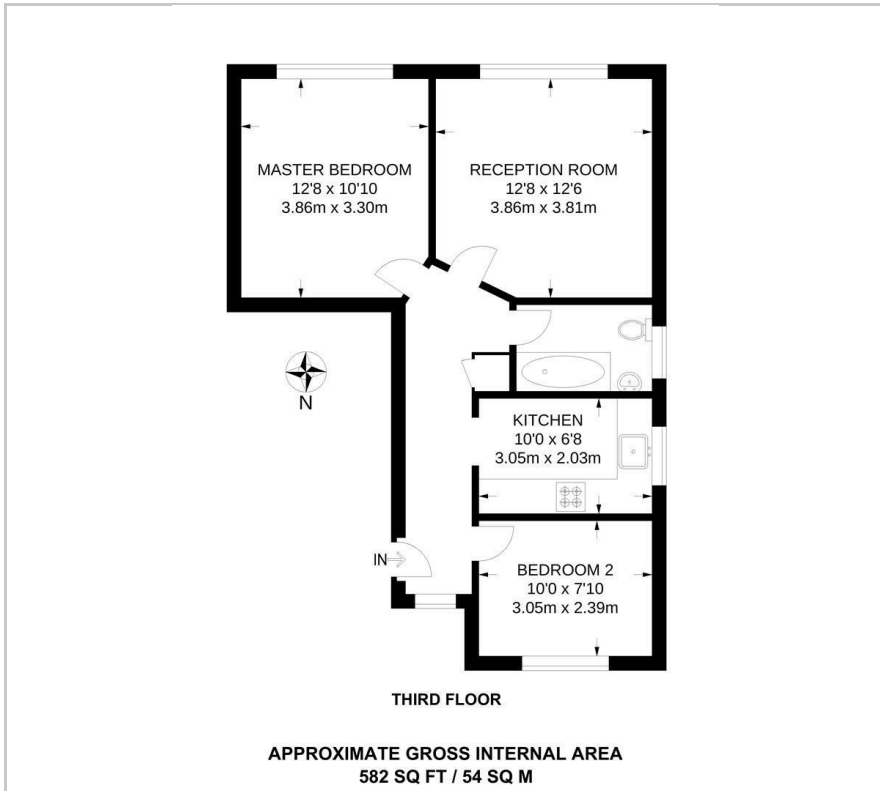
- TWO BEDROOMS
- CENTRAL LOCATION
- CLOSE TO LOCAL TRANSPORT LINKS
- WELL PRESENTED THROUGHOUT
- COMMUNAL GARDEN
- LONG LEASE

### Viewing

Please contact our Galloways West Norwood Office on if you wish to arrange a viewing appointment for this property or require further information.



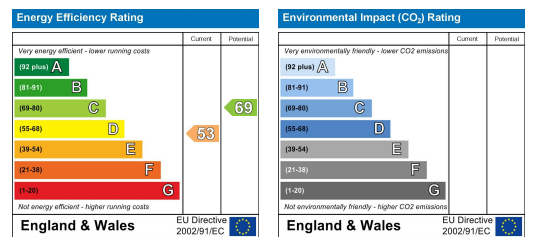
## Floor Plan



## Area Map



## Energy Efficiency Graph



These particulars, whilst believed to be accurate are set out as a general outline only for guidance and do not constitute any part of an offer or contract. Intending purchasers should not rely on them as statements of representation of fact, but must satisfy themselves by inspection or otherwise as to their accuracy. No person in this firm's employment has the authority to make or give any representation or warranty in respect of the property.