



## 14 Pinfold Drive

Prestwich, Manchester, M25 3EQ

**Offers Over £460,000**



**\*\*\*VIRTUAL TOUR\*\*\*DETACHED\*\*\*MODERN DEVELOPMENT\*\*\*IMMACULATE THROUGHOUT\*\*\*GARDENS\*\*\*DRIVEWAY\*\*\*STUNNING INTEGRATED KITCHEN\*\*\*ENSUITE\*\*\* Cousins Estate Agents are delighted to present this FABULOUS MODERN BUILD FOUR BEDROOM FAMILY HOME situated on the popular Redrow estate, close to Prestwich village, Metrolink and the M60 motorway.**

The house has been impeccably finished, and with an additional family room downstairs offers the perfect house for the growing family!

The internal accommodation consists: -

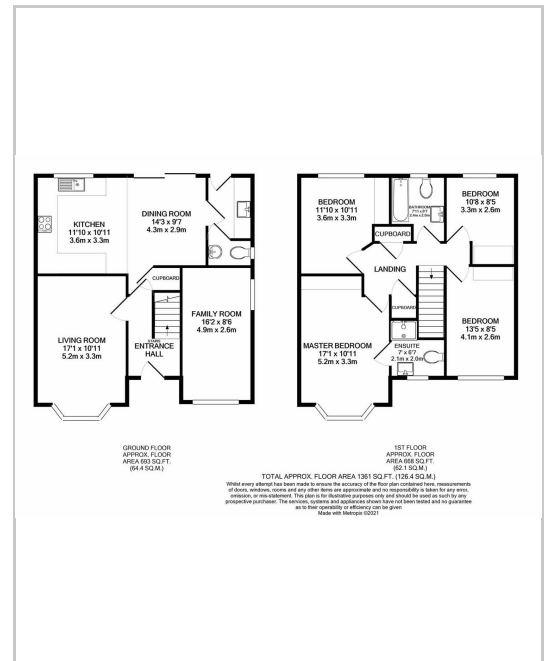
Ground floor - Entrance Hallway, spacious bay-fronted living room, open-plan styled Kitchen/Diner with integrated appliances and bright dining area, family/sitting room and downstairs Utility room with WC.



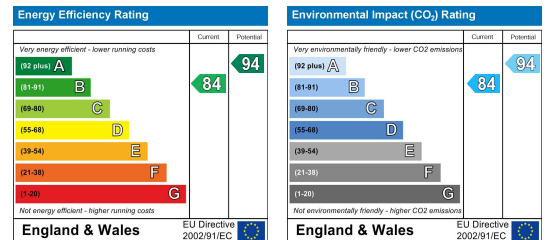
## Area Map



## Floor Plans



## Energy Efficiency Graph



These particulars, whilst believed to be accurate are set out as a general outline only for guidance and do not constitute any part of an offer or contract. Intending purchasers should not rely on them as statements of representation of fact, but must satisfy themselves by inspection or otherwise as to their accuracy. No person in this firm's employment has the authority to make or give any representation or warranty in respect of the property.

