



56 New Coventry Road, Sheldon, B26 3BF

£795

VIRTUAL TOUR AVAILABLE A superbly presented, modern furnished apartment which is ideally located for all local facilities and transport links. With a contemporary interior, this property comprises hallway, open plan living with a fully integrated kitchen, Juliette balcony, two double bedrooms with an en suite shower room to the master bedroom and a stunning bathroom. Further benefiting from sound proof double glazing, electric heating and an allocated parking space. This apartment is available immediately on a furnished basis

Entrance Hall

Intercom system, laminate wood flooring, storage cupboard, ceiling light point and doors to:-

Open Plan Living Area 25'2 x 12' (max) (7.67m x 3.66m (max))

Lounge Area

Double glazed French doors onto the balcony, electric heater, laminate flooring, power point and ceiling light point

Fully Integrated Kitchen Area

Fitted with a range of eye level and base units with a work surface over incorporating a stainless steel sink/drainage unit with mixer tap. Fitted electric oven with an electric hob and extractor hood over, glass splash back, integrated dishwasher, washing machine and fridge/freezer, ceiling spotlights, power points and ceiling light point.

Master Bedroom 17'9 (max) x 8'9 (5.41m (max) x 2.67m)

Double glazed window, electric heater, built in wardrobe, laminate flooring, ceiling light point, power point and door to;

En-Suite Shower Room

Fitted with a modern white suite comprising shower cubicle with thermostatic shower over, wall mounted sink and low level flush WC. Tiling to a full height throughout, heated towel rail and ceiling spotlights.

Bedroom Two 13'3 x 8'1 (4.04m x 2.46m)

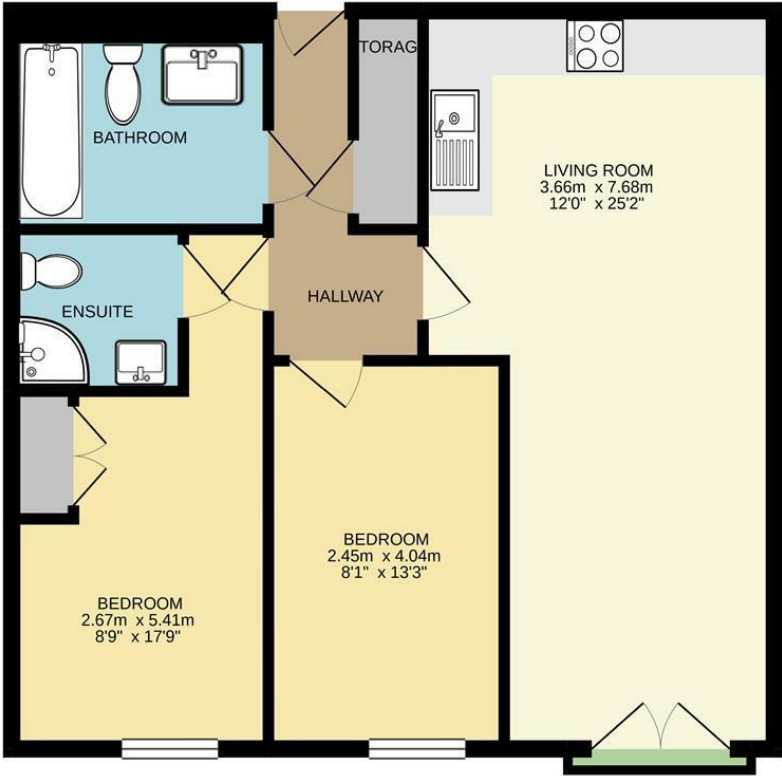
Double glazed window, electric heater, laminate flooring, ceiling light point and power points.

Stunning Bathroom

Fitted with a modern white suite comprising panelled bath with shower over and shower screen, wall mounted vanity sink and low level flush WC. Tiling to a full height throughout, heated towel rail, extractor fan and ceiling spotlights.

Floor Plan

FIRST FLOOR
60.3 sq.m. (649 sq.ft.) approx.

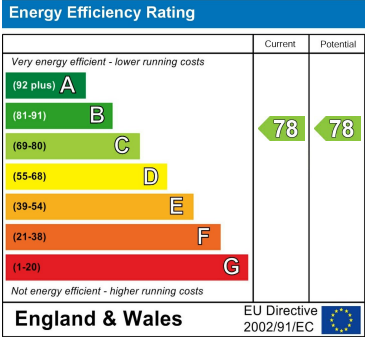


TOTAL FLOOR AREA : 60.3 sq.m. (649 sq.ft.) approx.
Whilst every attempt has been made to ensure the accuracy of the floorplan contained here, measurements of doors, windows, rooms and any other items are approximate and no responsibility is taken for any error, omission or misstatement. This plan is for illustrative purposes only and should be used as such by any prospective purchaser. The services, systems and appliances shown have not been tested and no guarantee as to their operability or efficiency can be given.
Made with Metreplex ©2020

Area Map



Energy Efficiency Graph



These particulars, whilst believed to be accurate are set out as a general outline only for guidance and do not constitute any part of an offer or contract. Intending purchasers should not rely on them as statements of representation of fact, but must satisfy themselves by inspection or otherwise as to their accuracy. No person in this firms employment has the authority to make or give any representation or warranty in respect of the property.