



City Link, Hessel Street, Salford, M50 1DH

£675 PCM

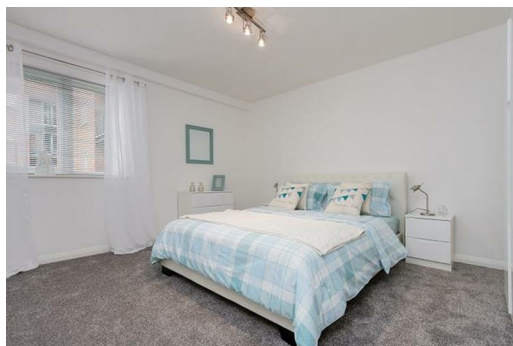
Luxury and convenience in one - that's what you'll find at City Link.

This is a fantastic location for anyone looking for a short commute into Manchester or Media City. It is right next to a MetroLink stop, with a direct route into Manchester within 15 minutes.

The centrepiece of this two-bedroom property is the open plan kitchen/lounge complete with tiled kitchen area, high quality tables, seats, sofas and a large window which truly brings this apartment to life. The bedrooms are nice sized doubles so you'll be able to kick your shoes off after a long day, stretch out and enjoy the peaceful surroundings. This spacious property also benefits from soft carpets and a nice sized bathroom in a lovely white finish.

If you're interested in having a closer look, or have any questions, do get in touch. And just so you know, the pictures for this apartment are for marketing purposes only. The internal fixtures, fittings and furnishings may vary.

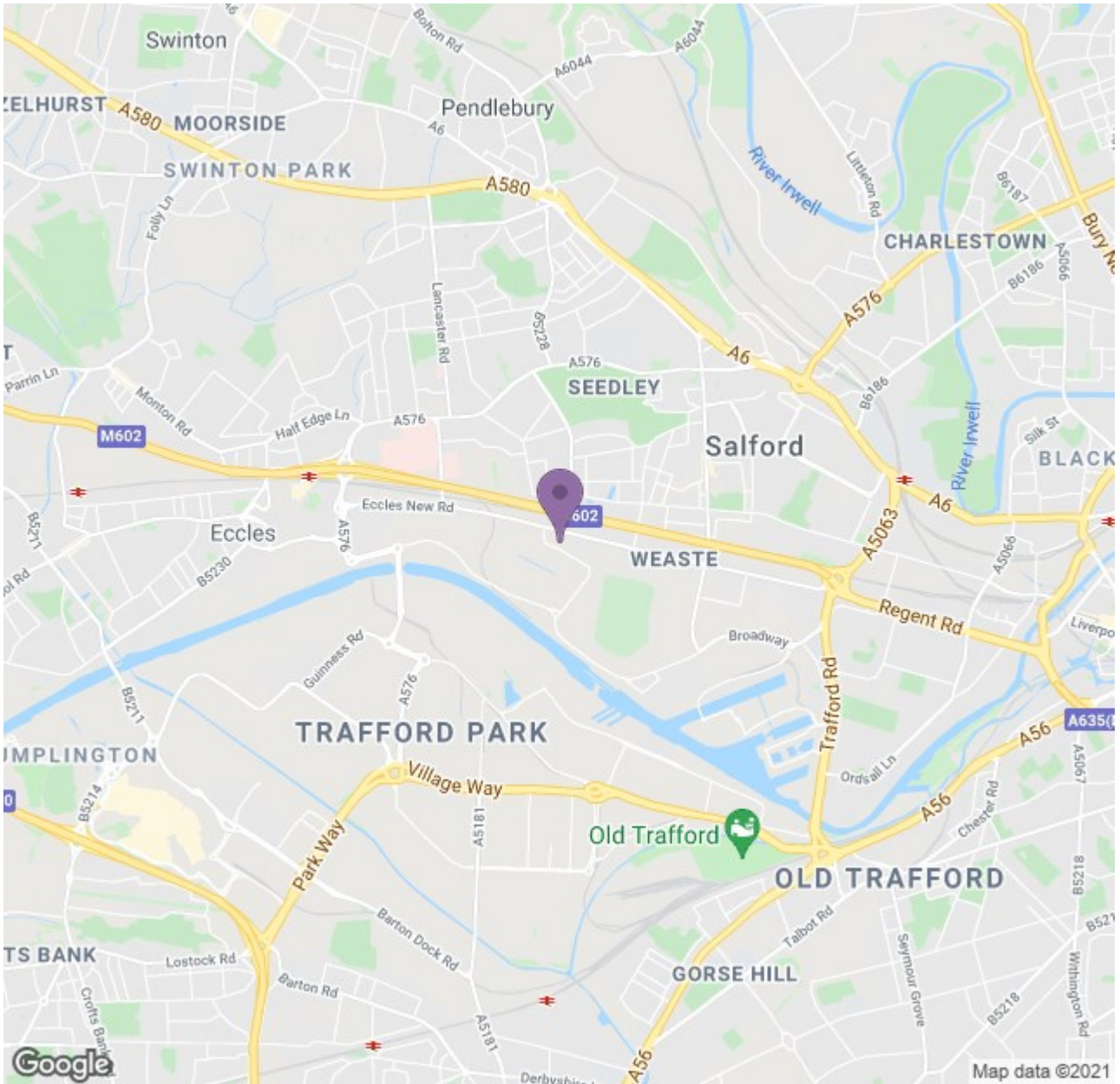
Available Now





# Ascend

Built on higher standards



Energy Efficiency Rating		Environmental Impact (CO <sub>2</sub> ) Rating	
Current	Target	Current	Target
A	B	A	B
B	C	B	C
C	D	C	D
D	E	D	E
E	F	E	F
F	G	F	G
G	H	G	H

England & Wales

# Ascend

Built on higher standards