

ORDNANCEHILL, ST JOHN'S WOOD, LONDON NW8



ORDNANCE HILL, ST JOHN'S WOOD, LONDON NW8

This charming end-of-terrace Georgian house has recently undergone a full refurbishment. Situated in the heart of St John's Wood, this delightful house (approximately 1810 sq ft / 168 sq m) is arranged over four floors and offers a large double front and rear aspect reception room that leads onto a private garden, a separate integrated modern kitchen which leads on to the dining room, four double bedrooms, two bathrooms (one en-suite) and a guest cloakroom. Ordnance Hill is a sought after road located close to St John's Wood High Street and within 0.3 miles of St John's Wood Jubilee Line tube station. The house is situated adjacent to Robinsfield Infant School. Available immediately either furnished or unfurnished.

ACCOMMODATION AND AMENITIES:

ENTRANCE HALL, GUEST CLOAKROOM, LARGE RECEPTION ROOM, DINING ROOM, SEPARATE KITCHEN, 4 DOUBLE BEDROOMS, 2 BATHROOMS (ONE EN-SUITE), PRIVATE REAR GARDEN. EPC RATING: D

RENTAL PRICE: £1,995 per week

Available FURNISHED or UNFURNISHED



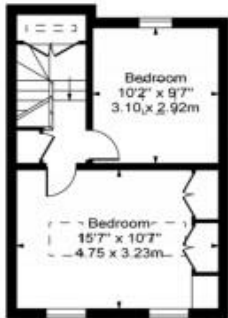




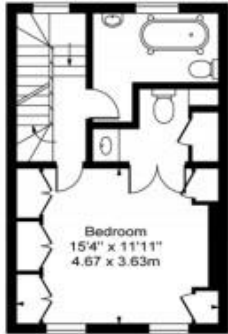




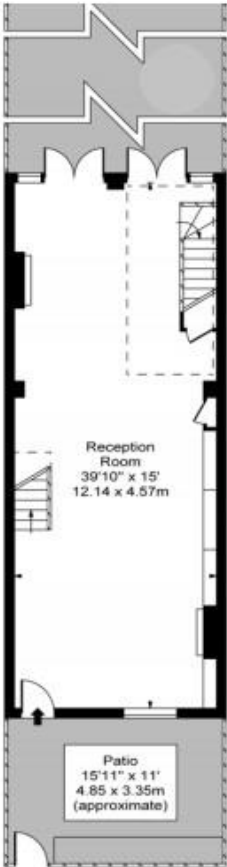
Ordnance Hill, NW8



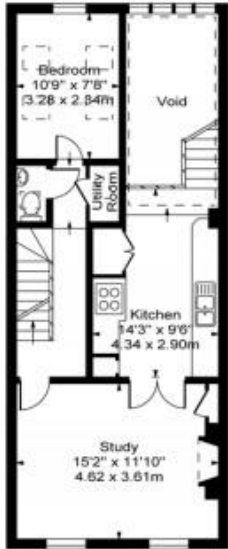
Third Floor



Second Floor



Ground Floor



First Floor

Approx Gross Internal Area 1810 Sq Ft - 168.14 Sq M
(Excluding Shed, Garden House & Void)