



69 Central Gardens, Liverpool, L1 2SS

Asking Price £145,000 Leasehold

www.cityresidential.co.uk



About the Property

Your new home awaits, proudly brought to the market is this well presented two bedroom apartment, second floor situated in Central Gardens.

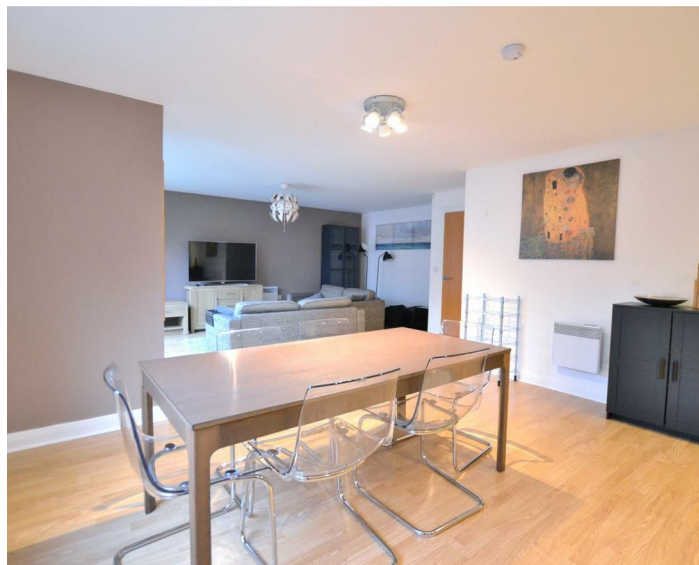
This spacious apartment would make an ideal home for any prospective purchaser. Located on Mount Pleasant the property provides you with convenient access to The University of Liverpool and many of the City Centres varied amenities.

The accommodation briefly comprises: communal entrance, entrance hall, fantastic size living/dining room with access onto a paved balcony, fully fitted kitchen, master bedroom with ensuite shower room, second double bedroom and family bathroom.

Early viewing is strongly recommended to appreciate the size of accommodation on offer.



Energy Efficiency Rating		Current	Potential
Very energy efficient - lower running costs			
(92 plus) A			
(81-91) B			84
(69-80) C	71		
(55-68) D			
(39-54) E			
(21-38) F			
(1-20) G			
Not energy efficient - higher running costs			
England & Wales	EU Directive 2002/91/EC		



City Residential
 81/87 Victoria Street, The Old Haymarket, Liverpool L1 6DG
 T: 0151 231 6100 F: 0151 231 6105
 E: sales@cityresidential.co.uk



WWW.
cityresidential
 .co.uk