



## 28 Rishworth Drive

, Manchester, M40 3PG

**Asking Price £149,950**



**\*\*\*FABULOUS OPPORTUNITY\*\*\*BUNGALOW\*\*\*TWO BEDROOMS\*\*\*DRIVEWAY\*\*\*GARAGE\*\*\*RENOVATION PROJECT\*\*\* Cousins Estate Agents are pleased to present this WELL-LOCATED BUNGALOW with excellent potential in Rishworth Drive, New Moston.**

Situated in a prime location close to Moston Brook with excellent travel links including nearby Metrolink, bus stops and the M60 motorway; this property offers an opportunity for a buyer to put their personal touch on this property!

The internal accomodation consists of: Kitchen/Diner, Internal hallway, Living room, two double Bedrooms, Shower room and seperate WC.

Externally, the bungalow benefits from a driveway, garage and gardens to the front and rear.



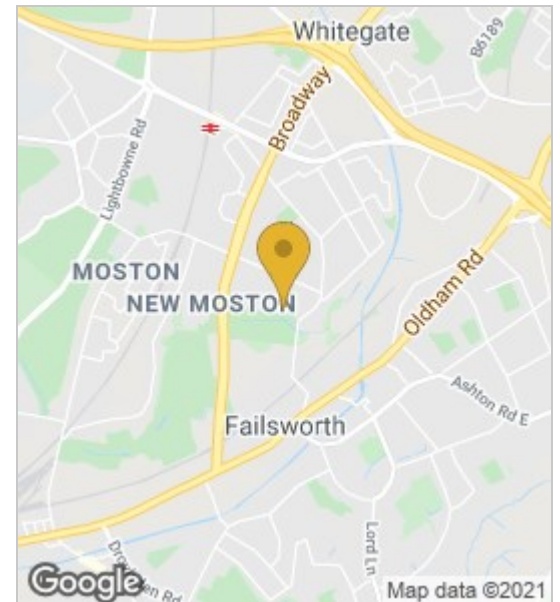
**Kitchen 9'11" \* 9'4" (3.04 \* 2.85)**

**Living room 14'9" \* 12'1" (4.5 \* 3.7)**

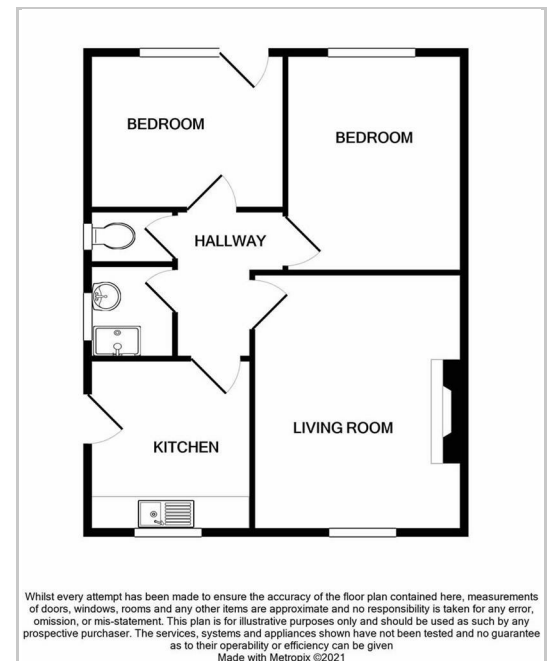
**Bedroom 1 13'9" \* 7'8" (4.2 \* 2.35)**

**Bedroom 2 10'4" \* 10'5" (3.15 \* 3.2)**

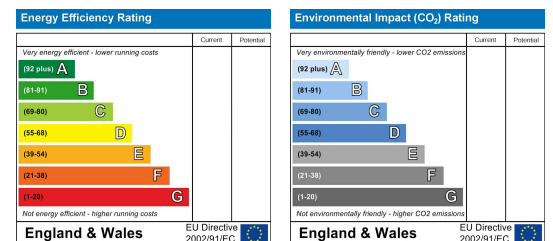
## Area Map



## Floor Plans



## Energy Efficiency Graph



These particulars, whilst believed to be accurate are set out as a general outline only for guidance and do not constitute any part of an offer or contract. Intending purchasers should not rely on them as statements of representation of fact, but must satisfy themselves by inspection or otherwise as to their accuracy. No person in this firm's employment has the authority to make or give any representation or warranty in respect of the property.

